

## Product datasheet

# Anti-Pro + Mature Surfactant Protein B antibody ab40876

★★★★★ 2 Abreviews 17 References 2 Images

### Overview

---

<b>Product name</b>	Anti-Pro + Mature Surfactant Protein B antibody
<b>Description</b>	Rabbit polyclonal to Pro + Mature Surfactant Protein B
<b>Host species</b>	Rabbit
<b>Tested applications</b>	<b>Suitable for:</b> WB, IHC-P
<b>Species reactivity</b>	<b>Reacts with:</b> Mouse, Sheep, Cow, Human
<b>Immunogen</b>	Full length native SP-B protein (purified) (Human)
<b>General notes</b>	<p>Reproducibility is key to advancing scientific discovery and accelerating scientists' next breakthrough.</p> <p>Abcam is leading the way with our range of recombinant antibodies, knockout-validated antibodies and knockout cell lines, all of which support improved reproducibility.</p> <p>We are also planning to innovate the way in which we present recommended applications and species on our product datasheets, so that only applications &amp; species that have been tested in our own labs, our suppliers or by selected trusted collaborators are covered by our Abpromise™ guarantee.</p> <p>In preparation for this, we have started to update the applications &amp; species that this product is Abpromise guaranteed for.</p> <p>We are also updating the applications &amp; species that this product has been “predicted to work with,” however this information is not covered by our Abpromise guarantee.</p> <p>Applications &amp; species from publications and Abreviews that have not been tested in our own labs or in those of our suppliers are not covered by the Abpromise guarantee.</p> <p>Please check that this product meets your needs before purchasing. If you have any questions, special requirements or concerns, please send us an inquiry and/or contact our Support team ahead of purchase. Recommended alternatives for this product can be found below, as well as customer reviews and Q&amp;As.</p>

### Properties

---

<b>Form</b>	Liquid
<b>Storage instructions</b>	Shipped at 4°C. Store at +4°C short term (1-2 weeks). Upon delivery aliquot. Store at -20°C or -

	80°C. Avoid freeze / thaw cycle.
<b>Storage buffer</b>	Preservative: 0.01% Sodium azide Constituent: Whole serum
<b>Purity</b>	Whole antiserum
<b>Clonality</b>	Polyclonal
<b>Isotype</b>	IgG

## Applications

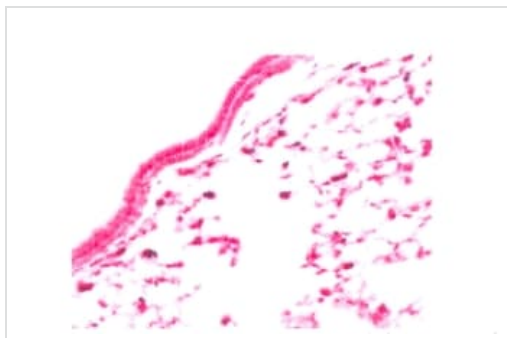
Our [Abpromise guarantee](#) covers the use of **ab40876** in the following tested applications.

The application notes include recommended starting dilutions; optimal dilutions/concentrations should be determined by the end user.

Application	Abreviews	Notes
WB	★★★★☆	1/5000. Predicted molecular weight: 42 kDa. (reduced or non-reduced samples).
IHC-P		Use at an assay dependent concentration.

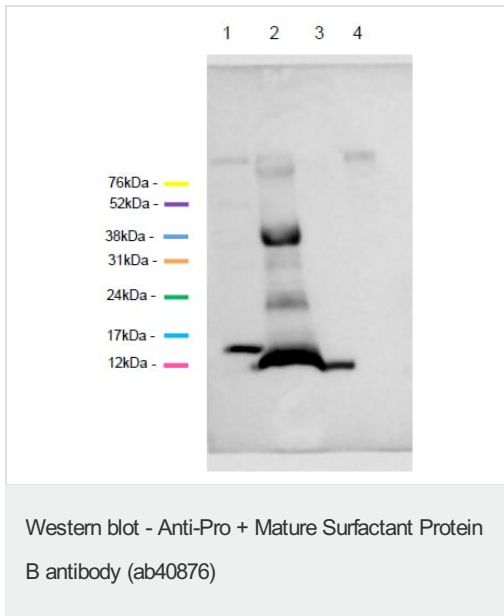
## Target

## Images



Adult mouse lung was embedded in paraffin and stained with ab40876 (1/500 dilution).

Immunohistochemistry (Formalin/PFA-fixed paraffin-embedded sections) - Anti-Pro + Mature Surfactant Protein B antibody (ab40876)



**All lanes :** Anti-Pro + Mature Surfactant Protein B antibody (ab40876) at 1/5000 dilution

**Lane 1 :** Adult mouse lung homogenate

**Lane 2 :** Human lung homogenate

**Lane 3 :** Surfactant Protein B peptide

**Lane 4 :** HEK-293T lysate

**Predicted band size:** 42 kDa

**Please note:** All products are "FOR RESEARCH USE ONLY. NOT FOR USE IN DIAGNOSTIC PROCEDURES"

### Our Abpromise to you: Quality guaranteed and expert technical support

- Replacement or refund for products not performing as stated on the datasheet
- Valid for 12 months from date of delivery
- Response to your inquiry within 24 hours
- We provide support in Chinese, English, French, German, Japanese and Spanish
- Extensive multi-media technical resources to help you
- We investigate all quality concerns to ensure our products perform to the highest standards

If the product does not perform as described on this datasheet, we will offer a refund or replacement. For full details of the Abpromise, please visit <https://www.abcam.com/abpromise> or contact our technical team.

### Terms and conditions

- Guarantee only valid for products bought direct from Abcam or one of our authorized distributors