

## Product datasheet

# Human HSP Antibody Array - Membrane (9 Targets) ab193661

[1 Image](#)

### Overview

<b>Product name</b>	Human HSP Antibody Array - Membrane (9 Targets)
<b>Sample type</b>	Cell Lysate
<b>Assay type</b>	Semi-quantitative
<b>Species reactivity</b>	<b>Reacts with:</b> Human
<b>Product overview</b>	ab193661 can be used for the simultaneous detection the relative levels of 9 Heat shock protein markers in cell lysates.

**Targets:** HSP27, HSP32, HSP40, HSP60, HSP70, HSP90, GRP75, Ubiquitin+1, HSP10.

#### [Learn more about membrane antibody arrays](#)

**Notes**

Abcam has not and does not intend to apply for the REACH Authorisation of customers' uses of products that contain European Authorisation list (Annex XIV) substances. It is the responsibility of our customers to check the necessity of application of REACH Authorisation, and any other relevant authorisations, for their intended uses.

**Tested applications**      **Suitable for:** Multiplex Protein Detection

### Properties

**Storage instructions**      Store at -20°C. Please refer to protocols.

Components	1 x 4 Membranes	1 x 8 Membranes	1 x 2 Membranes
1,000X HRP-Conjugated Streptavidin	1 x 50µl	1 x 50µl	1 x 50µl
1X Blocking Buffer	1 x 25ml	2 x 25ml	1 x 25ml
20X Wash Buffer I	1 x 10ml	1 x 20ml	1 x 10ml
20X Wash Buffer II	1 x 10ml	1 x 20ml	1 x 10ml
2X Cell Lysis Buffer	1 x 5ml	1 x 5ml	1 x 5ml

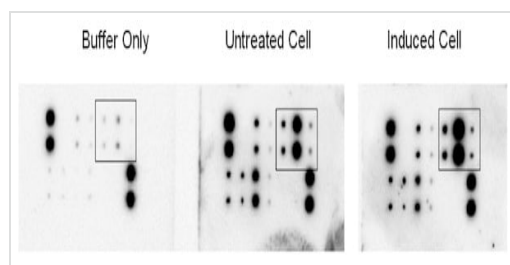
Components	1 x 4 Membranes	1 x 8 Membranes	1 x 2 Membranes
8-Well Incubation Tray (with Lid)	1 unit	1 unit	1 unit
Biotinylated Antibody Cocktail (C1)	2 vials	4 vials	1 vial
Detection Buffer C	1 x 1.5ml	1 x 2.5ml	1 x 1.5ml
Detection Buffer D	1 x 1.5ml	1 x 2.5ml	1 x 1.5ml
Human HSP Antibody Array Membranes (C1)	1 x 4 units	1 x 8 units	1 x 2 units
Protease Inhibitor Cocktail	1 vial	2 vials	1 vial

## Applications

**The Abpromise guarantee** Our **Abpromise guarantee** covers the use of ab193661 in the following tested applications. The application notes include recommended starting dilutions; optimal dilutions/concentrations should be determined by the end user.

Application	Abreviews	Notes
<b>Multiplex Protein Detection</b>		Use at an assay dependent concentration.

## Images



Typical images obtained with Abcam Human HSP Antibody Array - Membrane (9 Targets) ab193661.

Typical images obtained with Abcam Human HSP Antibody Array - Membrane (9 Targets) ab193661. These membranes were probed with conditioned media from HepG2 cell lines.

**Please note:** All products are "FOR RESEARCH USE ONLY. NOT FOR USE IN DIAGNOSTIC PROCEDURES"

## Our Abpromise to you: Quality guaranteed and expert technical support

- Replacement or refund for products not performing as stated on the datasheet
- Valid for 12 months from date of delivery
- Response to your inquiry within 24 hours
- We provide support in Chinese, English, French, German, Japanese and Spanish
- Extensive multi-media technical resources to help you

- We investigate all quality concerns to ensure our products perform to the highest standards

If the product does not perform as described on this datasheet, we will offer a refund or replacement. For full details of the Abpromise, please visit <https://www.abcam.com/abpromise> or contact our technical team.

#### **Terms and conditions**

---

- Guarantee only valid for products bought direct from Abcam or one of our authorized distributors