

Product datasheet

Human Inflammation Antibody Array - Membrane (20 targets) ab169804

[5 Images](#)

Overview

Product name	Human Inflammation Antibody Array - Membrane (20 targets)
Sample type	Cell culture supernatant, Saliva, Milk, Urine, Serum, Plasma, Cell culture extracts, Other biological fluids, Whole Blood, Tissue Extracts, Cell Lysate, Cell culture media
Assay type	Semi-quantitative
Species reactivity	Reacts with: Human
Product overview	ab169804 detects 20 Human Inflammatory Factors in 4 or 8 samples. Suitable for all liquid sample types.

Targets: Eotaxin-1, Eotaxin-2, G-CSF, GM-CSF, IFN-gamma, IL-1 alpha, IL-1 beta, IL-2, IL-3, IL-4, IL-6, IL-7, IL-8, IL-10, IL-11, IL-12 p40, IL-12 p70, IL-13, I-309, TIMP-2

[Learn more about membrane antibody arrays](#)

Notes

If you are interested in this cytokine array, arrays **[ab133996](#)**, **[ab133997](#)**, **[ab169817](#)**, **[ab133998](#)** and **[ab134003](#)** may also be of interest. A list of human antibody membrane arrays is available **[here](#)**.

Abcam has not and does not intend to apply for the REACH Authorisation of customers' uses of products that contain European Authorisation list (Annex XIV) substances.

It is the responsibility of our customers to check the necessity of application of REACH Authorisation, and any other relevant authorisations, for their intended uses.

Tested applications

Suitable for: Multiplex Protein Detection

Properties

Storage instructions Store at -20°C. Please refer to protocols.

Components	1 x 4 Membranes	1 x 8 Membranes
1,000X HRP-Conjugated Streptavidin	1 x 50µl	1 x 50µl

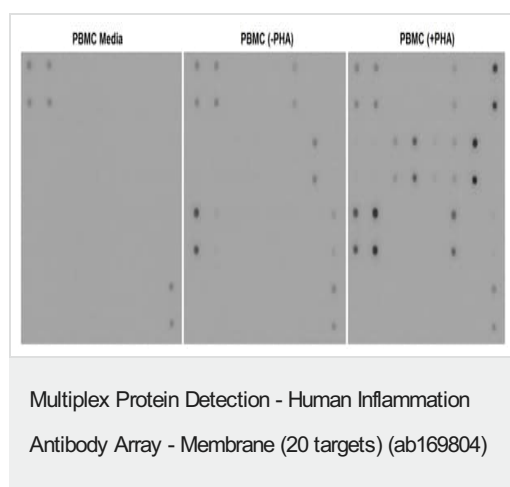
Components	1 x 4 Membranes	1 x 8 Membranes
1X Blocking Buffer	1 x 25ml	2 x 25ml
2000X Biotin-Conjugated Anti Cytokines	2 vials	4 vials
20X Wash Buffer I	1 x 10ml	1 x 20ml
20X Wash Buffer II	1 x 10ml	1 x 20ml
2X Cell Lysis Buffer	1 x 10ml	1 x 16ml
8-Well Incubation Tray (with Lid)	1 unit	1 unit
Detection Buffer C	1 x 1.5ml	1 x 2.5ml
Detection Buffer D	1 x 1.5ml	1 x 2.5ml
Inflammation Antibody Array Membranes	4 units	8 units

Applications

The Abpromise guarantee Our **Abpromise guarantee** covers the use of ab169804 in the following tested applications. The application notes include recommended starting dilutions; optimal dilutions/concentrations should be determined by the end user.

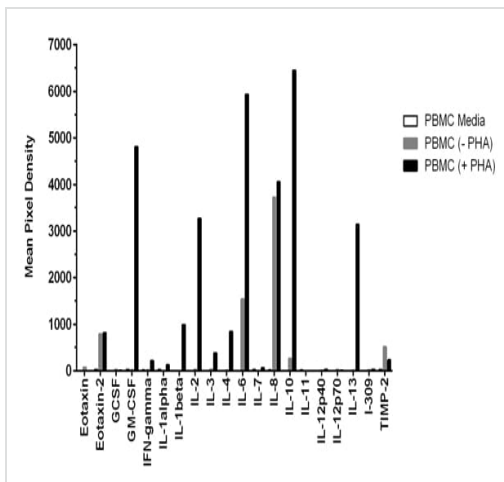
Application	Abreviews	Notes
Multiplex Protein Detection		Use at an assay dependent concentration.

Images



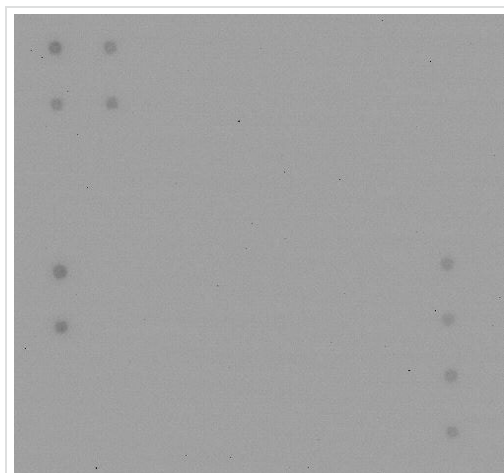
Human peripheral blood cells (1×10^6 cells/mL) were cultured in RPMI media supplemented with 10% fetal calf serum, 100 U/mL penicillin, and 100 mg/mL streptomycin sulfate.

Cells were cultured unstimulated or stimulated with 10 mg/mL PHA. Conditioned media was harvested after 48 hours, aliquoted and assayed using ab169804. Media alone was used as a negative control.



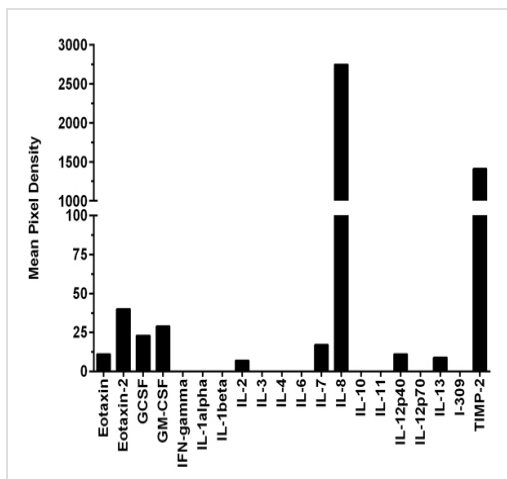
Quantification of Human Inflammation Antibody Array

Cells were cultured unstimulated or stimulated with 10 mg/mL PHA. Conditioned media was harvested after 48 hours, aliquoted and assayed using ab169804. Media alone was used as a negative control. Mean pixel density was quantified using CCD camera software analysis.



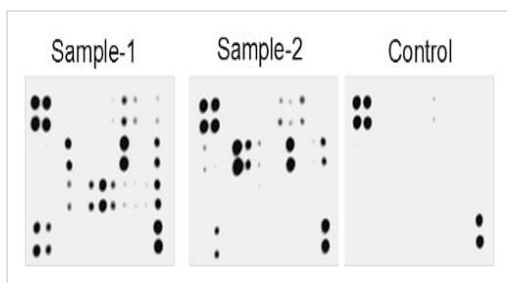
Multiplex Protein Detection - Human Inflammation Antibody Array - Membrane (20 targets) (ab169804)

HepG2 cells (Human hepatocellular carcinoma) were seeded at 1×10^6 cells/mL and cultured in EMEM media supplemented with 10% fetal calf serum, 100 U/mL penicillin, and 100 μ g/mL streptomycin sulfate. Conditioned media was harvested after 48 hours, aliquoted and assayed using ab169804.



Quantification of Human Inflammation Antibody Array

Conditioned media was harvested after 48 hours, aliquoted and assayed using ab169804. Mean pixel density was quantified using CCD camera software analysis.



Multiplex Protein Detection - Human Inflammation Antibody Array - Membrane (20 targets) (ab169804)

Typical results obtained with Abcam Membrane Antibody Arrays. Image above presents typical images obtained with Abcam Human Cytokine Membrane Antibody Array. These membranes were probed with conditioned media from two different cell lines. Membranes were exposed to film at RT for 1 min.

Please note: All products are "FOR RESEARCH USE ONLY. NOT FOR USE IN DIAGNOSTIC PROCEDURES"

Our Abpromise to you: Quality guaranteed and expert technical support

- Replacement or refund for products not performing as stated on the datasheet
- Valid for 12 months from date of delivery
- Response to your inquiry within 24 hours
- We provide support in Chinese, English, French, German, Japanese and Spanish
- Extensive multi-media technical resources to help you
- We investigate all quality concerns to ensure our products perform to the highest standards

If the product does not perform as described on this datasheet, we will offer a refund or replacement. For full details of the Abpromise, please visit <https://www.abcam.com/abpromise> or contact our technical team.

Terms and conditions

- Guarantee only valid for products bought direct from Abcam or one of our authorized distributors