

# Mouse Neuro Antibody Array (Membrane, 23 Targets) ab211069

[3 References](#) [1 Image](#)

### Overview

<b>Product name</b>	Mouse Neuro Antibody Array (Membrane, 23 Targets)
<b>Sample type</b>	Serum, Plasma, Other biological fluids, Cell Lysate, Cell culture media, Tissue Lysate
<b>Species reactivity</b>	<b>Reacts with:</b> Mouse
<b>Product overview</b>	Abcam's Mouse Neuro Antibody Array (ab211069), for use with serum, plasma, cell culture media, cell lysate, tissue lysate and other liquid sample types.

Targets: Fas Ligand, Fractalkine, GCSF, IFN-gamma, IGF-1, IL-10, IL-1 alpha, IL-1 beta, IL-4, IL-6, KC, LIX, MCP-1, M-CSF, MIP-1 alpha, MMP-2, MMP-3, RAGE, TARC, SDF-1 alpha, TGF beta, TNF alpha, VEGF-A.

**Notes** Cytokine arrays are an antibody-pair-based assay, analogous to ELISA, but using a membrane as a substrate rather than a plate. Capture antibodies are supplied arrayed/spotted on a membrane with each pair of spots representing a different analyte. Sample is added (0.2-1 mL of 1 sample to each membrane), and then paired biotinylated detector antibodies and streptavidin HRP. The cytokine array is analyzed using the same methods as a chemiluminescent western blot. Comparison between samples can be by eye or using densitometry software for a semi-quantitative comparison.

#### [Learn more about cytokine arrays and other membrane antibody arrays](#)

Abcam has not and does not intend to apply for the REACH Authorisation of customers' uses of products that contain European Authorisation list (Annex XIV) substances.

It is the responsibility of our customers to check the necessity of application of REACH Authorisation, and any other relevant authorisations, for their intended uses.

**Tested applications** **Suitable for:** Multiplex Protein Detection

### Properties

**Storage instructions** Store at -20°C. Please refer to protocols.

Components	2 Membrane	4 Membrane	8 Membrane
1,000X HRP-Conjugated Streptavidin	1 x 50µl	1 x 50µl	1 x 50µl

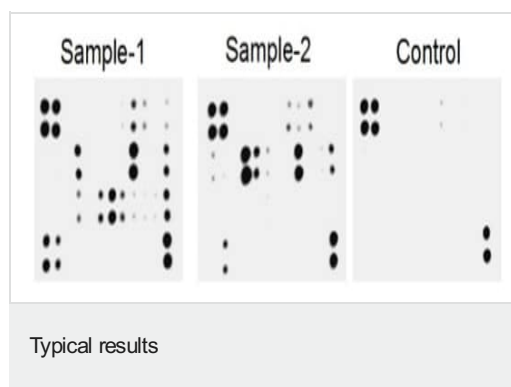
Components	2 Membrane	4 Membrane	8 Membrane
20X Wash Buffer I	1 x 10ml	1 x 10ml	1 x 20ml
20X Wash Buffer II	1 x 10ml	1 x 10ml	1 x 20ml
2X Cell Lysis Buffer	1 x 10ml	1 x 10ml	1 x 16ml
8-Well Incubation Tray (with Lid)	1 unit	1 unit	1 unit
Antibody Arrays	2 units	4 units	8 units
Biotinylated Antibody Cocktail	1 vial	2 vials	4 vials
1X Blocking Buffer	1 x 25ml	1 x 25ml	2 x 25ml
Detection Buffer C	1 x 1.5ml	1 x 1.5ml	1 x 2.5ml
Detection Buffer D	1 x 1.5ml	1 x 1.5ml	1 x 2.5ml
Plastic sheets	1 unit	1 unit	1 unit

## Applications

**The Abpromise guarantee** Our **Abpromise guarantee** covers the use of ab211069 in the following tested applications. The application notes include recommended starting dilutions; optimal dilutions/concentrations should be determined by the end user.

Application	Abreviews	Notes
<b>Multiplex Protein Detection</b>		Use at an assay dependent concentration.

## Images



**Please note:** All products are "FOR RESEARCH USE ONLY. NOT FOR USE IN DIAGNOSTIC PROCEDURES"

## **Our Abpromise to you: Quality guaranteed and expert technical support**

---

- Replacement or refund for products not performing as stated on the datasheet
- Valid for 12 months from date of delivery
- Response to your inquiry within 24 hours
  
- We provide support in Chinese, English, French, German, Japanese and Spanish
- Extensive multi-media technical resources to help you
- We investigate all quality concerns to ensure our products perform to the highest standards

If the product does not perform as described on this datasheet, we will offer a refund or replacement. For full details of the Abpromise, please visit <https://www.abcam.com/abpromise> or contact our technical team.

## **Terms and conditions**

---

- Guarantee only valid for products bought direct from Abcam or one of our authorized distributors