

Product datasheet

Macrophage Marker (CD11b, CD68, CD163, CD14, CD16) Antibody Panel - Human ab254013

Recombinant

8 Images

Overview

Product name	Macrophage Marker (CD11b, CD68, CD163, CD14, CD16) Antibody Panel - Human
Species reactivity	Reacts with: Human
Product overview	Macrophage Marker (CD11b, CD68, CD163, CD14, CD16) Antibody Panel - Human ab254013 contains multiple trial-sized versions of anti-human antibody clones against CD11b, CD68, CD163, CD14, CD16, specifically selected for high performance in various applications. This panel contains 5 recombinant rabbit monoclonal antibodies against human CD11b, CD68, CD163, CD14, CD16. They are provided as a sampler panel to allow you to easily evaluate each in your required applications.

For guidelines on how to use each antibody within the panel, please consult the individual datasheet for each antibody.

Panel contains:

- Rabbit monoclonal [EP1345Y] to CD11b (20 µL) [ab52478](#)
- Rabbit monoclonal [EPR20545] to CD68 (20 µL) [ab213363](#)
- Rabbit monoclonal [EPR19518] to CD163 (20 µL) [ab182422](#)
- Rabbit monoclonal [SP192] to CD14 (20 µL) [ab183322](#)
- Rabbit monoclonal [SP175] to CD16 (20 µL) [ab183354](#)

Notes **Explore our range of antibody sample panels** designed to provide you with a variety of trial-size antibodies in a convenient and cost-effective format.

Directly conjugated versions of our antibodies are available and ready to use for multicolor flow cytometry or immunocytochemistry analysis. **Carrier-free formulations** are also available for easy conjugation to labels of your choice. Please refer to the 'Associated products' section below.

Our RabMAb[®] technology is a patented hybridoma-based technology for making rabbit

monoclonal antibodies. For details on our patents, please refer to [RabMAb® patents](#).

Properties

Storage instructions

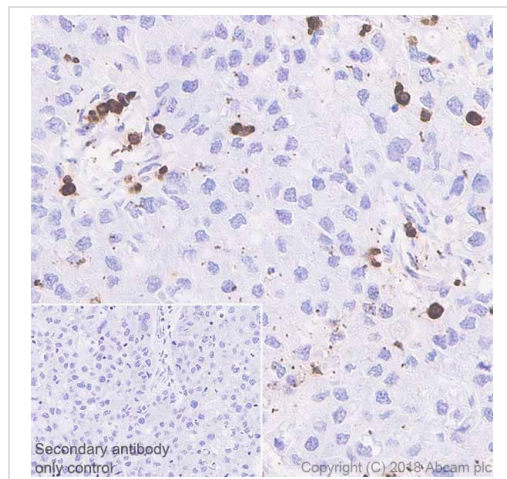
Store at -20°C. Please refer to protocols.

Components	1 kit
ab52478 - Anti-CD11b antibody [EP1345Y] - C-terminal	2 x 10µl
ab183322 - Anti-CD14 antibody [SP192]	2 x 10µl
ab183354 - Anti-CD16 antibody [SP175]	2 x 10µl
ab182422 - Anti-CD163 antibody [EPR19518]	2 x 10µl
ab213363 - Anti-CD68 antibody [EPR20545]	2 x 10µl

Cellular localization

CD11b: Membrane. CD14: Cell membrane. CD16: Cell membrane. Secreted. Exists also as a soluble receptor. CD68: Cell membrane and Endosome membrane. Lysosome membrane. CD163: Secreted and Cell membrane. Isoform 1 and isoform 2 show a lower surface expression when expressed in cells.

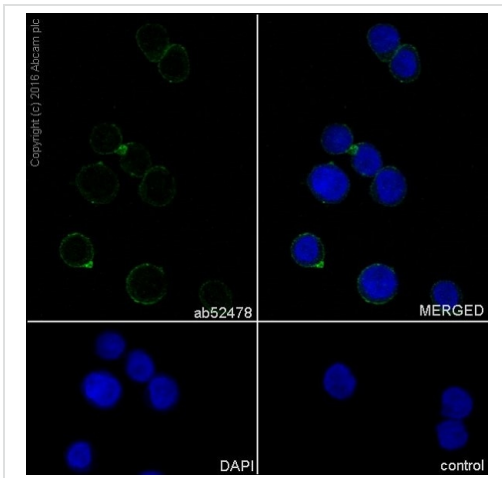
Images



Immunohistochemistry (Formalin/PFA-fixed paraffin-embedded sections) analysis of human cervical cancer tissue sections labeling CD11b with purified [ab52478](#) at 1:1000 dilution (0.28 µg/ml). Heat mediated antigen retrieval was performed using [ab93684](#) (Tris/EDTA buffer, pH 9.0) ImmunoHistoProbe one step HRP Polymer (ready to use) was used as the secondary antibody. Hematoxylin was used as a counterstain.

Negative control: PBS instead of the primary antibody (inset).

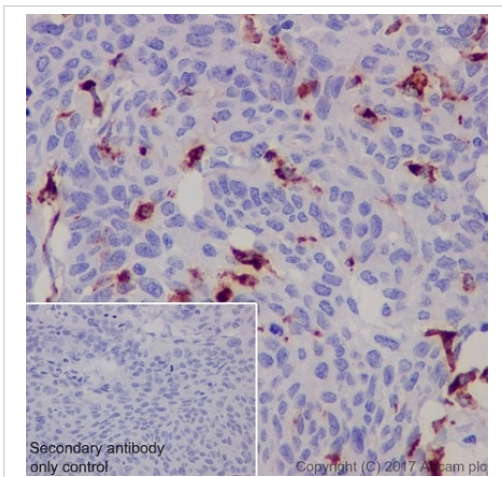
Immunohistochemistry (Formalin/PFA-fixed paraffin-embedded sections) - Anti-CD11b antibody [EP1345Y]



Immunocytochemistry/ Immunofluorescence - Anti-CD11b antibody [EP1345Y]

Unpurified **ab52478** staining CD11b in the THP-1 (Human monocytic leukemia cell line) cell line by ICC/IF (Immunocytochemistry/immunofluorescence).

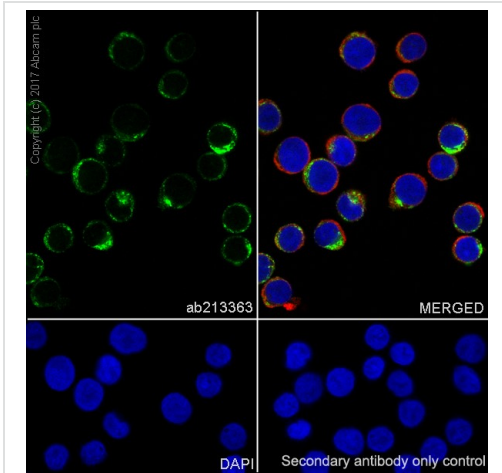
Cells were fixed with 100% methanol. Samples were incubated with primary antibody (1/250). **ab150077** was used as the secondary antibody (1/1000). Nuclei were stained with DAPI.



Immunohistochemistry (Formalin/PFA-fixed paraffin-embedded sections) - Anti-CD68 antibody [EPR20545]

Immunohistochemical analysis of paraffin-embedded human cervical carcinoma tissue labeling CD68 with **ab213363** at 1/8000 dilution, followed by Goat anti-Rabbit IgG H&L (HRP) Ready to use. Cytoplasmic staining on macrophages of human cervical carcinoma is observed (PMID: 12118106). Counter stained with hematoxylin.

Secondary antibody only control: Used PBS instead of primary antibody, secondary antibody is Goat anti-Rabbit IgG H&L (HRP) Ready to use.

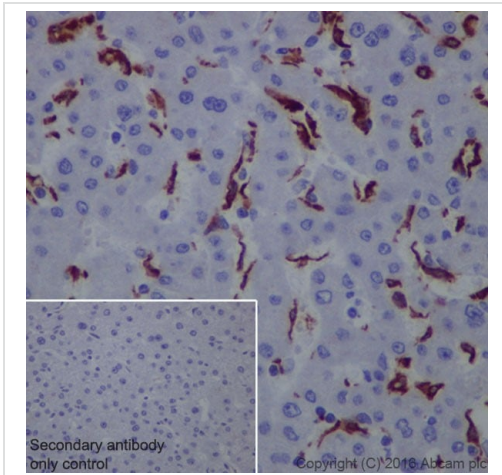


Immunocytochemistry/ Immunofluorescence - Anti-CD68 antibody [EPR20545]

Immunofluorescent analysis of 100% methanol-fixed U937 (human histiocytic lymphoma cell line) cells labeling CD68 with **ab213363** at 1/100 dilution followed by Goat Anti-Rabbit IgG H&L (Alexa Fluor® 488) (**ab150077**) secondary antibody at 1/1000 dilution (green). Confocal image showing cytoplasmic staining on U937 cells.

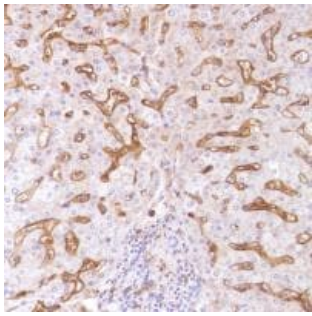
The nuclear counter stain is DAPI (blue). Tubulin is detected with Anti-alpha Tubulin antibody [DM1A] - Microtubule Marker (Alexa Fluor® 594) (**ab195889**) (red) at 1/200 dilution.

Secondary antibody only control: Used PBS instead of primary antibody, secondary antibody is Goat Anti-Rabbit IgG H&L (Alexa Fluor® 488) (**ab150077**) secondary antibody at 1/1000 dilution.



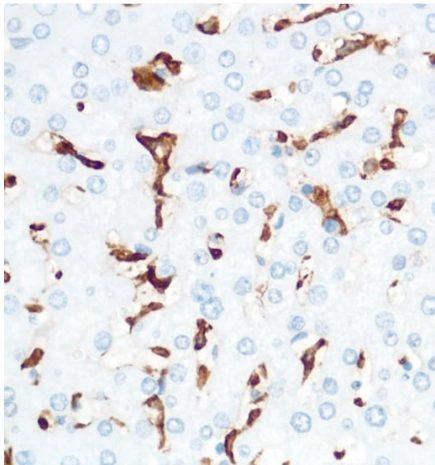
Immunohistochemistry (Formalin/PFA-fixed paraffin-embedded sections) - Anti-CD163 antibody [EPR19518]

Immunohistochemical analysis of paraffin-embedded human liver tissue labeling CD163 with **ab182422** at 1/500 dilution, followed by Goat Anti-Rabbit IgG H&L (HRP) (**ab97051**) at 1/500 dilution. Cytoplasm staining on Kupffer cells of human liver is observed. Counter stained with Hematoxylin. Secondary antibody only control: Used PBS instead of primary antibody, secondary antibody is **ab97051** at 1/500 dilution.



Immunohistochemical analysis of paraffin embedded Human liver tissue labeling CD14 with [ab183322](#) at 1/100.

Immunohistochemistry (Formalin/PFA-fixed paraffin-embedded sections) - Anti-CD14 antibody [SP192]



Immunohistochemical analysis of paraffin embedded human liver tissue labeling CD16 with [ab183354](#) at 1/100 dilution.

Immunohistochemistry (Formalin/PFA-fixed paraffin-embedded sections) - Anti-CD16 antibody [SP175]

Why choose a recombinant antibody?



Research with confidence
Consistent and reproducible results



Long-term and scalable supply
Recombinant technology



Success from the first experiment
Confirmed specificity



Ethical standards compliant
Animal-free production

Macrophage Marker (CD11b, CD68, CD163, CD14, CD16) Antibody Panel - Human (ab254013)

Please note: All products are "FOR RESEARCH USE ONLY. NOT FOR USE IN DIAGNOSTIC PROCEDURES"

Our Abpromise to you: Quality guaranteed and expert technical support

- Replacement or refund for products not performing as stated on the datasheet
- Valid for 12 months from date of delivery
- Response to your inquiry within 24 hours
- We provide support in Chinese, English, French, German, Japanese and Spanish
- Extensive multi-media technical resources to help you
- We investigate all quality concerns to ensure our products perform to the highest standards

If the product does not perform as described on this datasheet, we will offer a refund or replacement. For full details of the Abpromise, please visit <https://www.abcam.com/abpromise> or contact our technical team.

Terms and conditions

- Guarantee only valid for products bought direct from Abcam or one of our authorized distributors