

Mouse Loading Control Antibody Panel ab199713

★★★★★ [1 Abreviews](#) [183 References](#) [6 Images](#)

Overview

Product name Mouse Loading Control Antibody Panel

Product overview Ab199713 is a sampler pack of loading control mouse antibodies and a Goat Anti-Mouse IgG secondary antibody conjugated to HRP. This panel contains sample sizes of all mouse host primary antibodies against the following housekeeping targets: alpha Tubulin, GAPDH, COXIV, Histone H3, alpha 1 NaK ATPase.

The Mouse Loading Control Antibody Panel is designed for validation and confirmation of western blot analysis when tested in conjunction with your proteins of interest.

Please refer to each individual component datasheet for storage instructions.

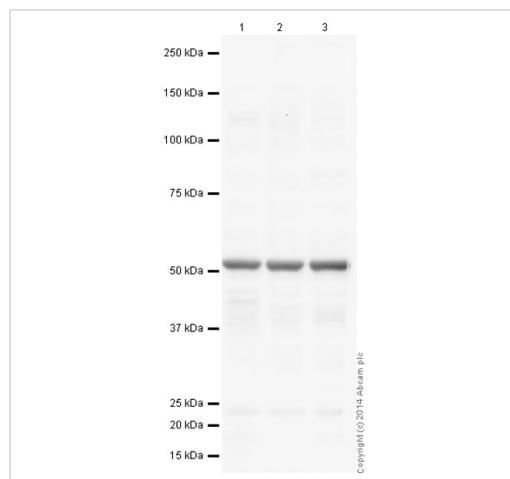
Notes [Explore our range of antibody sample panels](#) designed to provide you with a variety of trial-size antibodies in a convenient and cost-effective format.

Refer to the 'Associated Products' section below to see HRP-conjugated versions of these antibodies.

Properties

Storage instructions Store at -80°C. Please refer to protocols.

Components	1 units
ab7671 - Anti-alpha 1 Sodium Potassium ATPase antibody [464.6] - Plasma Membrane Marker	1 x 40µg
ab7291 - Anti-alpha Tubulin antibody [DM1A] - Loading Control	1 x 40µg
ab33985 - Anti-COX IV antibody [mAbcam33985] - Mitochondrial Marker	1 x 40µg
ab9484 - Anti-GAPDH antibody [mAbcam 9484] - Loading Control	1 x 40µg
ab24834 - Anti-Histone H3 antibody [mAbcam 24834] - Nuclear Loading Control and ChIP Grade	1 x 40µg
ab205719 - Goat Anti-Mouse IgG H+L (HRP)	1 x 100µg



Western blot - Mouse Loading Control Antibody
Panel (ab199713)

All lanes : Anti-alpha Tubulin antibody [DM1A] - Loading Control ([ab7291](#)) at 1 µg/ml

Lane 1 : HeLa (Human epithelial carcinoma cell line) Whole Cell Lysate

Lane 2 : NIH 3T3 (Mouse embryonic fibroblast cell line) Whole Cell Lysate

Lane 3 : PC12 (Rat adrenal pheochromocytoma cell line) Whole Cell Lysate

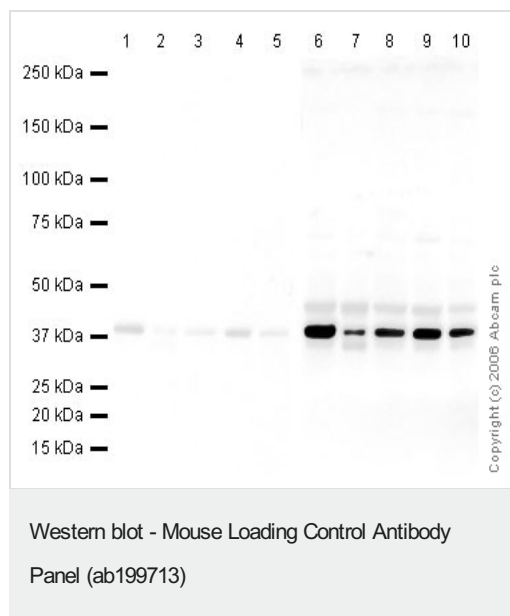
Lysates/proteins at 10 µg per lane.

Secondary

All lanes : Goat Anti-Mouse IgG H&L (HRP) preadsorbed ([ab97040](#))

Observed band size: 50 kDa

This blot was produced using a 4-12% Bis-tris gel under the MOPS buffer system. The gel was run at 200V for 50 minutes before being transferred onto a Nitrocellulose membrane at 30V for 70 minutes. The membrane was then blocked for an hour using 2% Bovine Serum Albumin before being incubated with [ab7291](#) overnight at 4°C. Antibody binding was detected using an anti-mouse antibody conjugated to HRP, and visualised using ECL development solution [ab133406](#)



Lanes 1-5 : Anti-GAPDH antibody [mAbcam 9484] - Loading

Control ([ab9484](#)) ((Blocked in 5% MILK))

Lanes 6-10 : Anti-GAPDH antibody [mAbcam 9484] - Loading

Control ([ab9484](#))

Lanes 1 & 6 : HeLa (Human epithelial carcinoma cell line) Nuclear Lysate

Lanes 2 & 7 : HeLa (Human epithelial carcinoma cell line) Whole Cell Lysate

Lanes 3 & 8 : A431 (Human epithelial carcinoma cell line) Whole Cell Lysate ([ab7909](#))

Lanes 4 & 9 : Jurkat (Human T cell lymphoblast-like cell line) Whole Cell Lysate ([ab7899](#))

Lanes 5 & 10 : HEK293 (Human embryonic kidney cell line) Whole Cell Lysate ([ab7902](#))

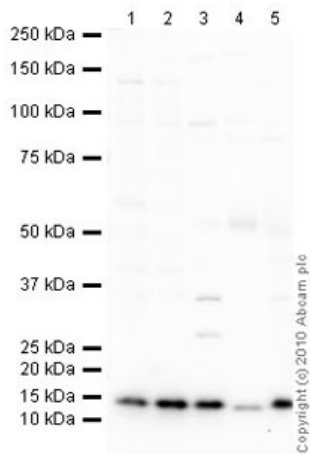
Lysates/proteins at 20 µg per lane.

Secondary

All lanes : Goat anti-Mouse (HRP conjugated) at 1/5000 dilution

Observed band size: 40 kDa

The membrane 1-5 was blocked in 5% Milk (1 hour). The membrane 6-10 was blocked in 5% BSA (1 hour). Abcam routinely uses 5% BSA to block however following recent customer feedback our labs investigated the effect of 5% milk blocking. We can now confirm that milk is not a suitable blocking agent and significantly decreases the signal on the membrane. We have informed all users of the antibody of this finding.



Western blot - Mouse Loading Control Antibody
Panel (ab199713)

All lanes : Anti-COX IV antibody [mAbcam33985] - Mitochondrial Marker ([ab33985](#)) at 1 µg/ml

Lane 1 : Jurkat (Human T cell lymphoblast-like cell line) Whole Cell Lysate

Lane 2 : HepG2 (Human hepatocellular liver carcinoma cell line) Whole Cell Lysate

Lane 3 : Skeletal Muscle (Human) Tissue Lysate - adult normal tissue ([ab29330](#))

Lane 4 : Skeletal Muscle (Mouse) Tissue Lysate

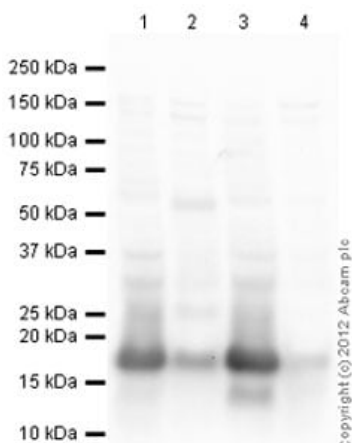
Lane 5 : Kidney (Cow) Tissue Lysate ([ab29073](#))

Lysates/proteins at 10 µg per lane.

Secondary

All lanes : Goat polyclonal to Mouse IgG - H&L - Pre-Adsorbed (HRP) at 1/3000 dilution

Observed band size: 15 kDa



Western blot - Mouse Loading Control Antibody
Panel (ab199713)

All lanes : Anti-Histone H3 antibody [mAbcam 24834] - Nuclear Loading Control and ChIP Grade ([ab24834](#)) at 1 µg/ml

Lane 1 : NIH 3T3 (Mouse embryonic fibroblast cell line) Whole Cell Lysate

Lane 2 : Testis (Mouse) Tissue Lysate

Lane 3 : PC12 (Rat adrenal pheochromocytoma cell line) Whole Cell Lysate

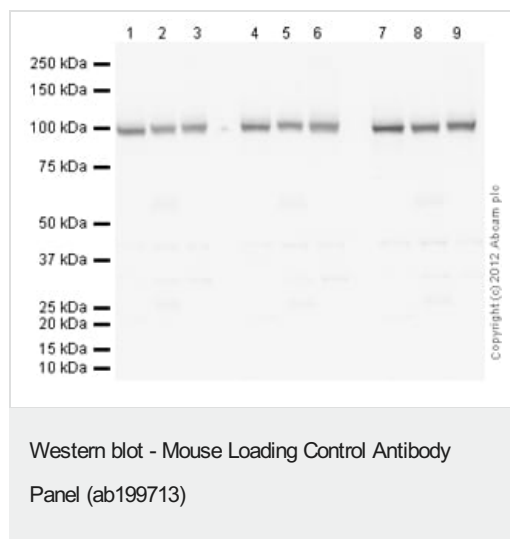
Lane 4 : Testis (Rat) Tissue Lysate - normal tissue ([ab29388](#))

Lysates/proteins at 10 µg per lane.

Secondary

All lanes : Goat Anti-Mouse IgG H&L (HRP) preadsorbed ([ab97040](#)) at 1/5000 dilution

Observed band size: 18 kDa



Lanes 1-3 : Anti-alpha 1 Sodium Potassium ATPase antibody [464.6] ([ab7671](#)) at 1 µg/ml

Lanes 4-6 : Anti-alpha 1 Sodium Potassium ATPase antibody [464.6] ([ab7671](#)) at 2 µg/ml

Lanes 7-9 : Anti-alpha 1 Sodium Potassium ATPase antibody [464.6] ([ab7671](#)) at 5 µg/ml

Lanes 1 & 7 : Brain (Human) Tissue Lysate - adult normal tissue ([ab29466](#))

Lanes 2 & 5 & 8 : Brain (Mouse) Tissue Lysate ([ab27253](#))

Lanes 3 & 6 & 9 : Brain (Rat) Tissue Lysate ([ab7942](#))

Lane 4 : Brain (Human) Tissue Lysate - adult normal tissue ([ab29466](#))

Lysates/proteins at 20 µg per lane.

Observed band size: 112 kDa

Why choose a recombinant antibody?

Research with confidence
Consistent and reproducible results

Long-term and scalable supply
Recombinant technology

Success from the first experiment
Confirmed specificity

Ethical standards compliant
Animal-free production

Mouse Loading Control Antibody Panel (ab199713)

Please note: All products are "FOR RESEARCH USE ONLY. NOT FOR USE IN DIAGNOSTIC PROCEDURES"

Our Abpromise to you: Quality guaranteed and expert technical support

- Replacement or refund for products not performing as stated on the datasheet
- Valid for 12 months from date of delivery

- Response to your inquiry within 24 hours
- We provide support in Chinese, English, French, German, Japanese and Spanish
- Extensive multi-media technical resources to help you
- We investigate all quality concerns to ensure our products perform to the highest standards

If the product does not perform as described on this datasheet, we will offer a refund or replacement. For full details of the Abpromise, please visit <https://www.abcam.com/abpromise> or contact our technical team.

Terms and conditions

- Guarantee only valid for products bought direct from Abcam or one of our authorized distributors