

Product datasheet

PD-L1 antibody (28-8) IHC antigen retrieval and detection panel ab236676

RabMAb

[1 References](#) [2 Images](#)

Overview

Product name PD-L1 antibody (28-8) IHC antigen retrieval and detection panel

Species reactivity **Reacts with:** Human

Product overview PD-L1 antibody (28-8) IHC antigen retrieval and detection kit ab236676 contains the 28-8 clone PD-L1 antibody ([ab205921](#)), and the critical reagents we recommend using with it for immunohistochemistry on paraffin-embedded tissue sections.

Kit contains:

[ab205921](#) PD-L1 antibody (28-8)

[ab208572](#) HIER antigen retrieval reagent

[ab209101](#) Rabbit specific IHC polymer detection kit HRP

[ab209101](#) contains amplifier secondary antibody, and HRP polymer tertiary antibody.

For instructions for use please consult the protocol books found on the online datasheets for [ab205921](#), [ab208572](#), and [ab209101](#).

Notes

Abcam has not and does not intend to apply for the REACH Authorisation of customers' uses of products that contain European Authorisation list (Annex XIV) substances. It is the responsibility of our customers to check the necessity of application of REACH Authorisation, and any other relevant authorisations, for their intended uses.

Our RabMAb[®] technology is a patented hybridoma-based technology for making rabbit monoclonal antibodies. For details on our patents, please refer to [RabMAb[®] patents](#).

Tested applications **Suitable for:** IHC-P, IHC-P

Properties

Storage instructions

Please refer to protocols.

Components	1 units
ab208572 - Universal HIER antigen retrieval reagent (10X)	1 x 100ml
Amplifier	1 x 15ml
ab205921 - Anti-PD-L1 antibody [28-8]	1 x 50µl
Detector	1 x 15ml

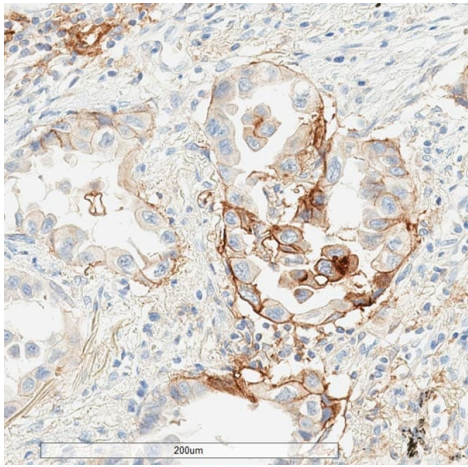
Function	Involved in the costimulatory signal, essential for T-cell proliferation and production of IL10 and IFNG, in an IL2-dependent and a PDCD1-independent manner. Interaction with PDCD1 inhibits T-cell proliferation and cytokine production.
Tissue specificity	Highly expressed in the heart, skeletal muscle, placenta and lung. Weakly expressed in the thymus, spleen, kidney and liver. Expressed on activated T- and B-cells, dendritic cells, keratinocytes and monocytes.
Sequence similarities	Belongs to the immunoglobulin superfamily. BTN/MOG family. Contains 1 Ig-like C2-type (immunoglobulin-like) domain. Contains 1 Ig-like V-type (immunoglobulin-like) domain.
Cellular localization	Cell membrane and Endomembrane system.

Applications

The Abpromise guarantee Our **Abpromise guarantee** covers the use of ab236676 in the following tested applications. The application notes include recommended starting dilutions; optimal dilutions/concentrations should be determined by the end user.

Application	Abreviews	Notes
IHC-P		Use at an assay dependent concentration.
IHC-P		Use at an assay dependent concentration.

Images



Immunohistochemistry (Formalin/PFA-fixed paraffin-embedded sections) - Anti-PD-L1 antibody [28-8] (

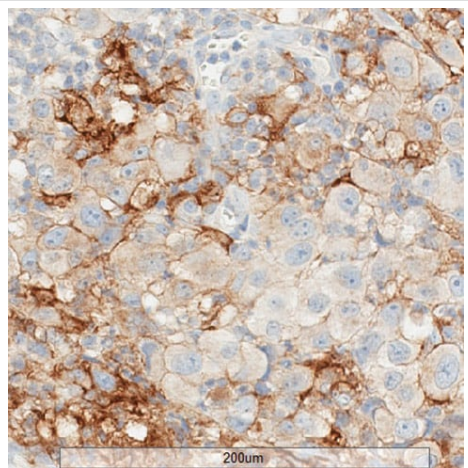
[ab205921](#)

)

Immunohistochemistry (Formalin/PFA-fixed paraffin-embedded sections) analysis of human non-small cell lung cancer tissue labelling PD-L1 with [ab205921](#). Tumor cells and immune cells localized within the stroma show PD-L1 plasma membrane staining.

For antigen retrieval buffer, Universal HIER antigen retrieval reagent ([ab208572](#)) was used.

For IHC detection kit, Rabbit specific IHC polymer detection kit HRP/DAB ([ab209101](#)) is recommended.



Immunohistochemistry (Formalin/PFA-fixed paraffin-embedded sections) - Anti-PD-L1 antibody [28-8] (

[ab205921](#)

)

Immunohistochemistry (Formalin/PFA-fixed paraffin-embedded sections) analysis of human melanoma tissue labelling PD-L1 with [ab205921](#) on Ventana Ultra. Tumor cells and immune cells show PD-L1 positive plasma membrane staining.

For antigen retrieval buffer, Universal HIER antigen retrieval reagent ([ab208572](#)) was used.

For IHC detection kit, Rabbit specific IHC polymer detection kit HRP/DAB ([ab209101](#)) is recommended.

Please note: All products are "FOR RESEARCH USE ONLY. NOT FOR USE IN DIAGNOSTIC PROCEDURES"

Our Abpromise to you: Quality guaranteed and expert technical support

- Replacement or refund for products not performing as stated on the datasheet
- Valid for 12 months from date of delivery
- Response to your inquiry within 24 hours
- We provide support in Chinese, English, French, German, Japanese and Spanish
- Extensive multi-media technical resources to help you

- We investigate all quality concerns to ensure our products perform to the highest standards

If the product does not perform as described on this datasheet, we will offer a refund or replacement. For full details of the Abpromise, please visit <https://www.abcam.com/abpromise> or contact our technical team.

Terms and conditions

- Guarantee only valid for products bought direct from Abcam or one of our authorized distributors