

Product datasheet

3' to 5' Exonuclease Activity Assay Kit (Fluorometric) ab273269

[4 Images](#)

Overview

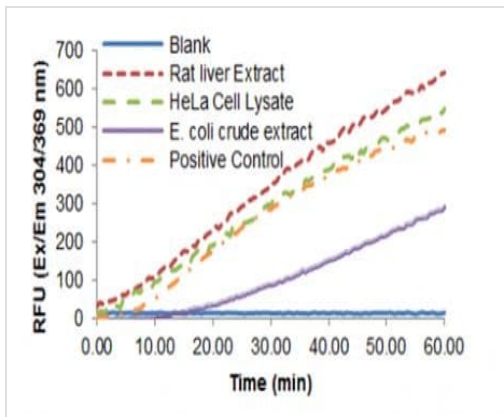
Product name	3' to 5' Exonuclease Activity Assay Kit (Fluorometric)
Detection method	Colorimetric/Fluorometric
Sample type	Cell culture extracts, Adherent cells, Suspension cells, Tissue Extracts
Assay type	Enzyme activity (quantitative)
Assay duration	Multiple steps standard assay
Product overview	3' to 5' Exonuclease Activity Assay Kit (Fluorometric) (ab273269) provides a quick and easy method for monitoring 3' exonuclease activities in a wide variety of samples. In this assay, exonuclease digests the provided DNA probe, producing a strong fluorescent signal (Ex/Em = 304/369nm). The kit is simple, sensitive, high-throughput adaptable and can detect as low as 0.2 μ U of exonuclease activity.
Notes	This product is manufactured by BioVision, an Abcam company and was previously called K175 3' to 5' Exonuclease Activity Assay (Fluorometric). K175-100 is the same size as the 100 test size of ab273269.
Platform	Microplate

Properties

Storage instructions Store at -20°C. Please refer to protocols.

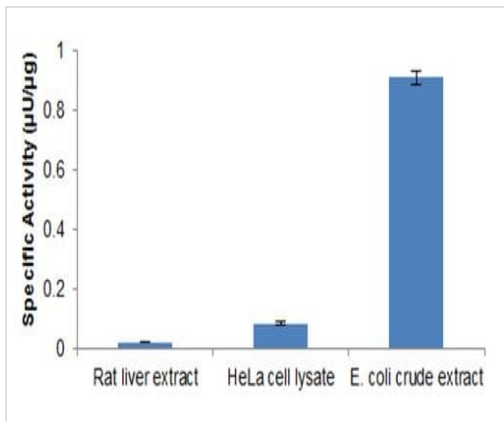
Components	100 tests
Exonuclease Assay Buffer	1 x 25ml
Exonuclease Positive Control	1 vial
Exonuclease Probe	1 vial
Fluorescence Standard II	1 x 100 μ l
96-Well Half Area Plate (with lid)	1 unit

Images



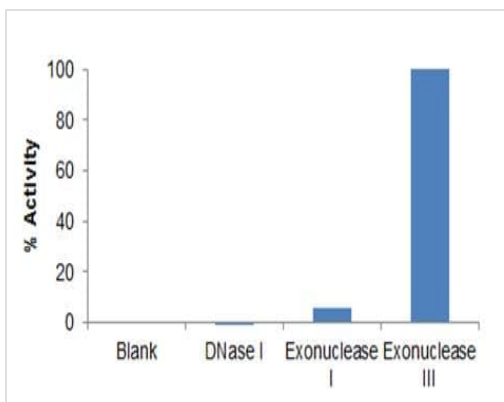
Kinetic curves of rat liver extract (40.6 μg), HeLa cell lysate(12.2 μg) and *E.coli* (0.642 μg).

3' to 5' Exonuclease Kinetics



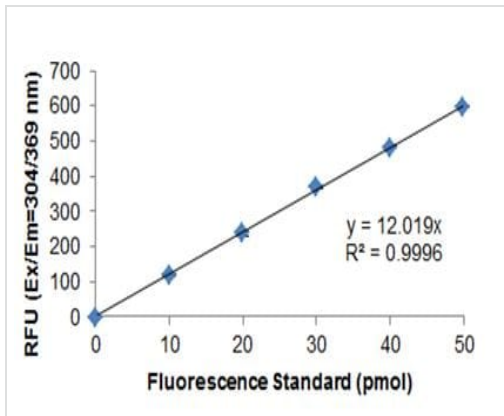
Specific activity from rat liver extract (0.0206 $\mu\text{U}/\mu\text{g}$), HeLa cell lysate (0.0841 $\mu\text{U}/\mu\text{g}$) and *E.coli* crude extract (0.9071 $\mu\text{U}/\mu\text{g}$). Assays performed according to the kit protocol.

3' to 5' Exonuclease Activity in different Sample types



Specific activity of the probe to 3' to 5' Exonuclease (Exonuclease III) in contrast to DNAase I. Same units of proteins were added as defined by the commercially available values.

3' to 5' Exonuclease Activity



Typical standard curve – data provided **for demonstration purposes only**. A new standard curve must be generated for each assay performed.

Fluorescence Standard Curve.

Fluorescence Standard Curve

Please note: All products are "FOR RESEARCH USE ONLY. NOT FOR USE IN DIAGNOSTIC PROCEDURES"

Our Abpromise to you: Quality guaranteed and expert technical support

- Replacement or refund for products not performing as stated on the datasheet
- Valid for 12 months from date of delivery
- Response to your inquiry within 24 hours
- We provide support in Chinese, English, French, German, Japanese and Spanish
- Extensive multi-media technical resources to help you
- We investigate all quality concerns to ensure our products perform to the highest standards

If the product does not perform as described on this datasheet, we will offer a refund or replacement. For full details of the Abpromise, please visit <https://www.abcam.com/abpromise> or contact our technical team.

Terms and conditions

- Guarantee only valid for products bought direct from Abcam or one of our authorized distributors