

Product datasheet

Fixable Cell Viability Assay Kit (Fluorometric - Green Ex 405 nm) - CytoPainter ab176739

[2 Images](#)

Overview

Product name	Fixable Cell Viability Assay Kit (Fluorometric - Green Ex 405 nm) - CytoPainter
Detection method	Fluorescent
Sample type	Adherent cells, Suspension cells
Assay type	Cell-based (quantitative)
Species reactivity	Reacts with: Mammals, Other species
Product overview	Abcam's CytoPainter Fixable Cell Viability Assay Kit (Fluorometric – Green Ex 405 nm) (ab176739) is used to evaluate the viability of mammalian cells by flow cytometry.

The fluorescent dye provided in the kit is retained in cells by reacting with cellular components. For viable cells, only the cell-surface amines are available to react with the dye while for the necrotic cells or the other cells with compromised membranes, the reactive dye reacts with cell surface amines and intracellular amines, resulting in more intense fluorescent staining. The difference in fluorescence intensity between the live and dead cell populations is ~100-500 fold and can be completely preserved after fixation.

The dye is designed to label cells at Ex/Em =408/512 nm excited with a violet laser at Ex=405 nm.

Notes

Related assays

Review the [cell health assay guide](#) to learn about kits to perform a [cell viability assay](#), [cytotoxicity assay](#) and [cell proliferation assay](#).

Platform

Flow cytometer

Properties

Storage instructions Store at -20°C. Please refer to protocols.

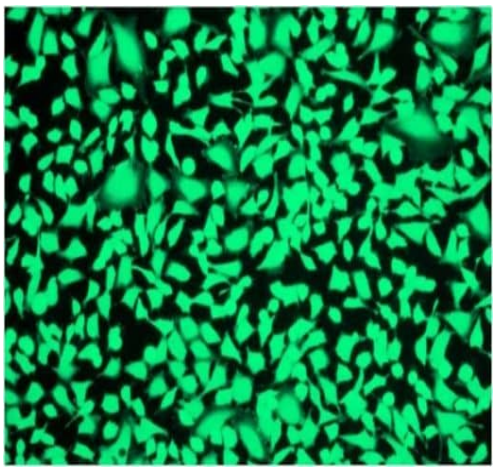
Components	200 tests
DMSO	1 x 200µl

Components	200 tests
Tracking dye Violet 500	1 vial

Relevance

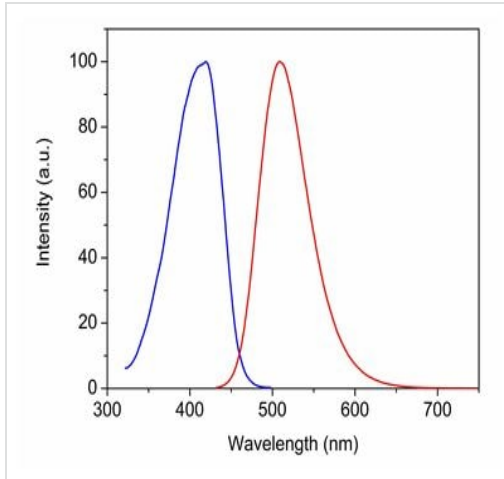
Cell viability is a determination of living or dead cells, based on a total cell population. Cell viability assess healthy cells in a sample, with no distinction between dividing or quiescent cells. An increase in cell viability indicates cell growth, while a decrease in viability can generally be interpreted as the result of either toxic effects of compounds/agents or suboptimal culture conditions.

Images



HeLa cells fixed with formaldehyde and stained with Abcam's CytoPainter Fixable Cell Viability Assay Kit (Fluorometric - Green Ex 405 nm) (ab176739) in a Costar black wall/clear bottom 96-well plate.

HeLa cells stained with CytoPainter Cell Viability Assay Kit (Fluorometric-Green Ex 405 nm) (ab176739)



Spectrum of Tracking dye Violet 500 (ab176739).

Excitation and Emission spectra of CytoPainter Fixable Cell Viability Assay (Fluorometric - Green Ex 405 nm) (ab176739)

Please note: All products are "FOR RESEARCH USE ONLY. NOT FOR USE IN DIAGNOSTIC PROCEDURES"

Our Abpromise to you: Quality guaranteed and expert technical support

- Replacement or refund for products not performing as stated on the datasheet
- Valid for 12 months from date of delivery
- Response to your inquiry within 24 hours

- We provide support in Chinese, English, French, German, Japanese and Spanish
- Extensive multi-media technical resources to help you
- We investigate all quality concerns to ensure our products perform to the highest standards

If the product does not perform as described on this datasheet, we will offer a refund or replacement. For full details of the Abpromise, please visit <https://www.abcam.com/abpromise> or contact our technical team.

Terms and conditions

- Guarantee only valid for products bought direct from Abcam or one of our authorized distributors