

## Product datasheet

# Golgi Staining Kit - Green Fluorescence - Cytopainter ab139483

[4 References](#) [2 Images](#)

### Overview

<b>Product name</b>	Golgi Staining Kit - Green Fluorescence - Cytopainter
<b>Sample type</b>	Adherent cells, Suspension cells
<b>Assay type</b>	Cell-based
<b>Species reactivity</b>	<b>Reacts with:</b> Mammals, Other species
<b>Product overview</b>	<p>Golgi Staining Kit - Green Fluorescence   Cytopainter (ab139483) contains an Golgi apparatus-selective dye suitable for live cell, or aldehyde-fixed cell staining. Micromolar concentrations of the green dye are sufficient for staining mammalian cells, as validated with human cervical carcinoma cell line HeLa, human T-lymphocyte cell line Jurkat, and human bone osteosarcoma epithelial cell line, U2OS. One important application of ab139483 is in fluorescence co-localization imaging with red fluorescent protein (RFP)- or orange fluorescent protein (OFP)-tagged proteins, a powerful approach for determining the targeting of molecules to intracellular compartments and for screening of their associations and interactions.</p>

ab139483 is specifically designed for use with RFP- or OFP-expressing cell lines, as well as cells expressing blue or cyan fluorescent proteins (BFPs, CFPs). Additionally, the kit is suitable for use with live or post-fixed cells in conjunction with probes, such as labeled antibodies, or other fluorescent conjugates displaying similar spectral properties as Texas Red, or coumarin. A nuclear counterstain is provided to highlight this organelle as well.

Review other dyes and kits for [Golgi staining](#), or the [live cell staining fluorescent dyes guide](#)

<b>Notes</b>	<p>This kit can be readily used in combination with other common UV and visible light excitable organic fluorescent dyes and various fluorescent proteins in multi-color imaging and detection applications. The dye emits in the FITC region of the visible light spectrum, and is resistant to photo-bleaching, concentration quenching and photoconversion.</p>
--------------	--

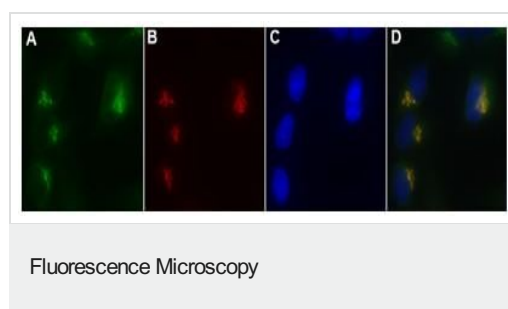
<b>Platform</b>	Fluorescence microscope
-----------------	-------------------------

### Properties

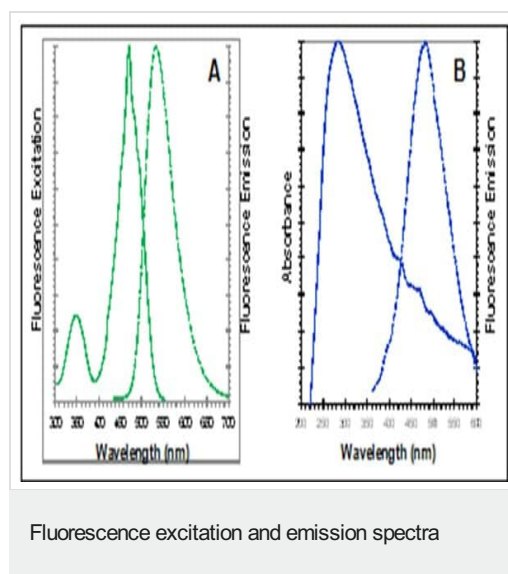
<b>Storage instructions</b>	Please refer to protocols.
-----------------------------	----------------------------

Components	100 tests
10X Assay Buffer 1	1 x 15ml
50X Assay Buffer 2	1 x 1.2ml
Golgi Green Detection Reagent	1 x 50nmole
Hoechst 33342 Nuclear Stain	1 x 50µl

## Images



Golgi Green Detection dye co-localizes with N-acetylgalactosaminyltransferase-2, fused to red fluorescent protein (RFP). (A) Golgi Green Detection dye, (B) HeLa cells expressing RFP-N-acetylgalactosaminyltransferase-2, (C) Hoechst 33342 staining, (D) composite image.



Fluorescence excitation and emission spectra for Golgi Green Detection dye (panel A) and absorbance and fluorescent emission spectra for Hoechst 33342 dye (panel B). All spectra were determined in 1X Assay Solution.

**Please note:** All products are "FOR RESEARCH USE ONLY. NOT FOR USE IN DIAGNOSTIC PROCEDURES"

## Our Abpromise to you: Quality guaranteed and expert technical support

- Replacement or refund for products not performing as stated on the datasheet
- Valid for 12 months from date of delivery
- Response to your inquiry within 24 hours
- We provide support in Chinese, English, French, German, Japanese and Spanish
- Extensive multi-media technical resources to help you

- We investigate all quality concerns to ensure our products perform to the highest standards

If the product does not perform as described on this datasheet, we will offer a refund or replacement. For full details of the Abpromise, please visit <https://www.abcam.com/abpromise> or contact our technical team.

#### **Terms and conditions**

---

- Guarantee only valid for products bought direct from Abcam or one of our authorized distributors