

Lysophosphatidylcholine Assay Kit (Colorimetric/Fluorometric) ab273332

4 Images

Overview

Product name	Lysophosphatidylcholine Assay Kit (Colorimetric/Fluorometric)
Detection method	Colorimetric/Fluorometric
Sample type	Other biological fluids, Cell Lysate, Tissue Lysate
Assay type	Quantitative
Assay duration	Multiple steps standard assay
Product overview	<p>Lysophosphatidylcholine Assay Kit (Colorimetric/Fluorometric) (ab273332) utilizes LPC-specific enzymes to generate an intermediate that then reacts with a probe, yielding a signal that can be quantified either colorimetrically or fluorometrically, and is proportional to the amount of LPC present in the sample.</p> <p>When used as described, the assay is capable of detecting as little as 10 pmole of Lysophosphatidylcholine.</p>
Notes	<p>This product is manufactured by BioVision, an Abcam company and was previously called K735 Lysophosphatidylcholine Assay Kit (Colorimetric/Fluorometric). K735-100 is the same size as the 100 test size of ab273332.</p>
Platform	Microplate

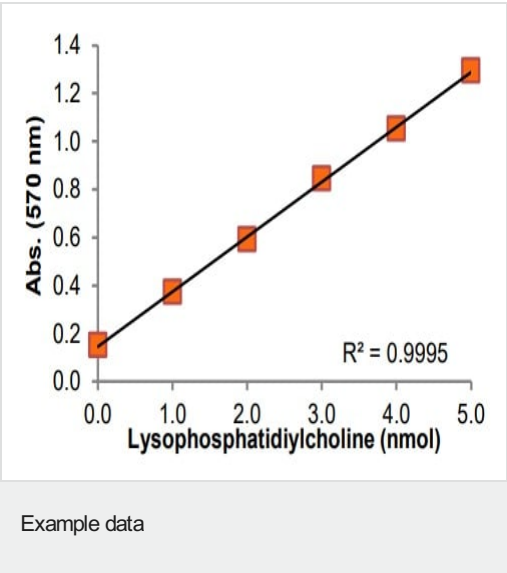
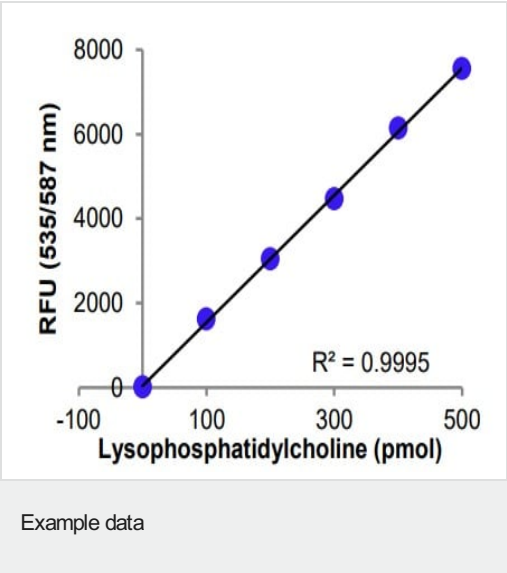
Properties

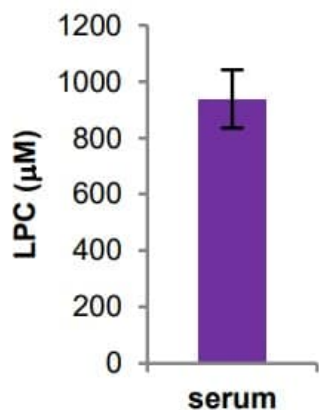
Storage instructions Store at -20°C. Please refer to protocols.

Components	100 tests	100 tests
Assay Buffer LXI	1 x 25ml	1 x 25ml
LPC Developer Mix	1 vial	1 vial
LPC Enzyme Mix Lyophilized	1 vial	1 vial
LPC Standard	1 vial	1 vial

Components	100 tests	100 tests
Lysis Buffer II	1 x 1ml	2 x 1ml
OxiRed Probe	1 x 200µl	1 x 200µl

Images

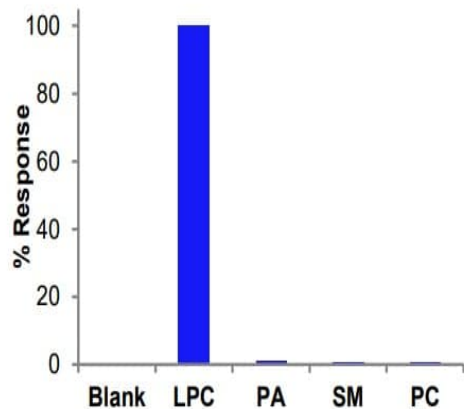




Example data

Example data.

Determination of total LPC concentration in pooled human serum. Sample was analyzed according to the kit protocol. Values were determined with fluorometric measurements and are mean \pm standard deviation of at least three independent determinations.



Example data

Example data.

Specificity of the assay: PC = phosphatidylcholine, PA = phosphatidic acid, SM = sphingomyelin, LPC = lysophosphatidylcholine. 1 nmole of each was tested in the fluorometric assay.

Please note: All products are "FOR RESEARCH USE ONLY. NOT FOR USE IN DIAGNOSTIC PROCEDURES"

Our Abpromise to you: Quality guaranteed and expert technical support

- Replacement or refund for products not performing as stated on the datasheet
- Valid for 12 months from date of delivery
- Response to your inquiry within 24 hours
- We provide support in Chinese, English, French, German, Japanese and Spanish

- Extensive multi-media technical resources to help you
- We investigate all quality concerns to ensure our products perform to the highest standards

If the product does not perform as described on this datasheet, we will offer a refund or replacement. For full details of the Abpromise, please visit <https://www.abcam.com/abpromise> or contact our technical team.

Terms and conditions

- Guarantee only valid for products bought direct from Abcam or one of our authorized distributors