

Lysosomal Staining Reagent - Blue - Cytopainter ab176825

[1 Image](#)

Overview

Product name	Lysosomal Staining Reagent - Blue - Cytopainter
Sample type	Adherent cells, Suspension cells
Assay type	Cell-based (qualitative)
Species reactivity	Reacts with: Mammals, Other species
Product overview	Lysosomal Staining Reagent - Blue Cytopainter (ab176825) is part of a series of new fluorogenic probes to label lysosomes of live cells. The proprietary lysotropic dye selectively accumulates in lysosomes probably via the lysosome pH gradient. The lysotropic indicator is a hydrophobic compound that easily permeates intact live cells, and becomes trapped in lysosomes after it gets into the cells. Its fluorescence is significantly enhanced upon entering lysosomes. This key feature significantly reduces its staining background and makes it useful for a variety of studies, including cell adhesion, chemotaxis, multidrug resistance, cell viability, apoptosis and cytotoxicity. It is suitable for proliferating and non-proliferating cells, and can be used for both suspension and adherent cells.

Review other dyes and kits for [lysosomal staining](#), or the [live cell staining fluorescent dyes guide](#)

Notes	Lysosomes are cellular organelles which contain acid hydrolase enzymes to break up waste materials and cellular debris. Lysosomes digest excess or worn-out organelles, food particles, and engulfed viruses or bacteria. The membrane around a lysosome allows the digestive enzymes to work at pH 4.5. The interior of the lysosomes is acidic (pH 4.5 – 4.8) compared to the slightly alkaline cytosol (pH 7.2). The lysosome maintains the pH differential by pumping protons from the cytosol across the membrane via proton pumps and chloride ion channels.
--------------	--

Platform	Fluorescence microscope
-----------------	-------------------------

Properties

Storage instructions	Store at -20°C. Please refer to protocols.
-----------------------------	--

Components	500 tests
CytoPainter LysoBlue Indicator Reagent	1 x 500 tests

Images

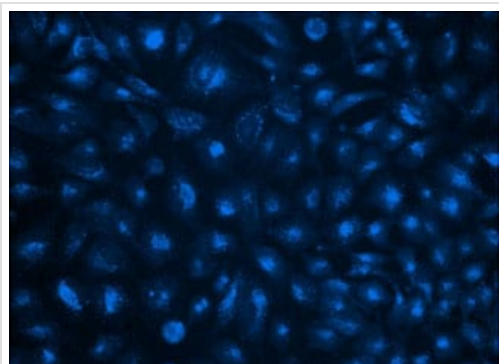


Image of U2OS cells stained with CytoPainter LysoBlue Indicator Reagent (ab176825)

Image of U2OS cells stained with Abcam's CytoPainter LysoBlue Indicator Reagent (ab176825) in a Costar black wall/clear bottom 96-well plate.

Please note: All products are "FOR RESEARCH USE ONLY. NOT FOR USE IN DIAGNOSTIC PROCEDURES"

Our Abpromise to you: Quality guaranteed and expert technical support

- Replacement or refund for products not performing as stated on the datasheet
- Valid for 12 months from date of delivery
- Response to your inquiry within 24 hours

- We provide support in Chinese, English, French, German, Japanese and Spanish
- Extensive multi-media technical resources to help you
- We investigate all quality concerns to ensure our products perform to the highest standards

If the product does not perform as described on this datasheet, we will offer a refund or replacement. For full details of the Abpromise, please visit <https://www.abcam.com/abpromise> or contact our technical team.

Terms and conditions

- Guarantee only valid for products bought direct from Abcam or one of our authorized distributors