

Product datasheet

Phalloidin-iFluor 680 Reagent ab176760

[1 References](#) [2 Images](#)

Overview

Product name	Phalloidin-iFluor 680 Reagent
Sample type	Adherent cells, Suspension cells
Assay type	Cell-based (qualitative)
Product overview	Phalloidin-iFluor 680 Reagent (ab176760) is one of a series of phalloidin conjugates that bind to actin filaments, also known as F-actin. Phalloidin-iFluor 680 can be detected with a fluorescent microscope at Ex/Em = 683/700 nm (NIR range).

Phalloidin conjugates are convenient probes for labeling, identifying and quantifying animal or plant actin filaments in formaldehyde-fixed and permeabilized tissue sections, cell cultures or cell-free experiments. They can also be used in paraffin-embedded samples that have been de-paraffinized.

Review our other popular phalloidin dye conjugates, including [Phalloidin-iFluor 488](#), [Phalloidin-iFluor 647](#), [Phalloidin-iFluor 594](#), [Phalloidin-iFluor 555](#), and [Rhodamine Phalloidin](#), or search our website to see the rest of the range.

Notes	<p>Staining fixed cell or tissue samples with phalloidin conjugates is very simple; it requires a single 20-90 min incubation with the phalloidin, followed by 3 short wash steps. Phalloidin staining can be combined with antibody-based staining by adding the phalloidin conjugate during either the primary or secondary antibody incubation step.</p> <p>When used in unfixed samples, phalloidin binding leads to a decrease in the disassociation rate of actin subunits from the ends of actin filaments, essentially stabilizing actin filaments through the prevention of filament depolymerisation.</p>
--------------	---

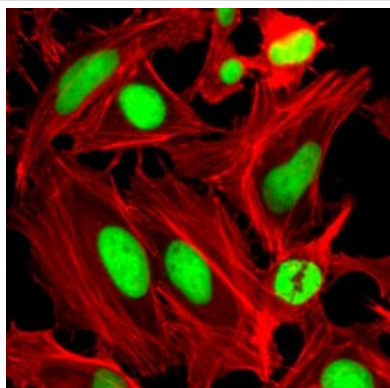
Platform	Fluorescence microscope
-----------------	-------------------------

Properties

Storage instructions	Store at -20°C. Please refer to protocols.
-----------------------------	--

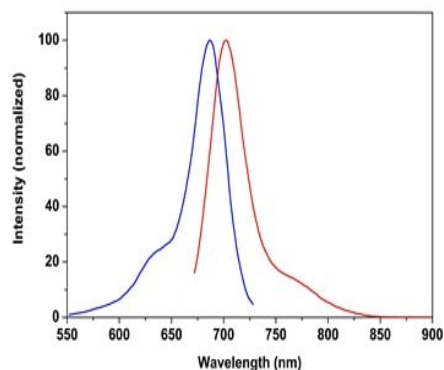
Components	300 tests
Phalloidin-iFluor 680 Conjugate	1 x 300 tests

Images



Actin filaments staining in HeLa cells. Actin filaments (red) were stained with CytoPainter Phalloidin-iFluor 680 reagent (ab176760). Nuclei were stained with Nuclear Green DCS1 ([ab138905](#)).

CytoPainter Phalloidin-iFluor 680 Reagent
(ab176760)



Excitation and emission spectra of phalloidin-iFluor 680 reagent.

CytoPainter Phalloidin-iFluor 680 Reagent
(ab176760)

Please note: All products are "FOR RESEARCH USE ONLY. NOT FOR USE IN DIAGNOSTIC PROCEDURES"

Our Abpromise to you: Quality guaranteed and expert technical support

- Replacement or refund for products not performing as stated on the datasheet
- Valid for 12 months from date of delivery
- Response to your inquiry within 24 hours
- We provide support in Chinese, English, French, German, Japanese and Spanish

- Extensive multi-media technical resources to help you
- We investigate all quality concerns to ensure our products perform to the highest standards

If the product does not perform as described on this datasheet, we will offer a refund or replacement. For full details of the Abpromise, please visit <https://www.abcam.com/abpromise> or contact our technical team.

Terms and conditions

- Guarantee only valid for products bought direct from Abcam or one of our authorized distributors