

Product datasheet

Sorbitol Dehydrogenase Activity Assay Kit (Colorimetric) ab252902

[3 Images](#)

Overview

Product name	Sorbitol Dehydrogenase Activity Assay Kit (Colorimetric)
Detection method	Colorimetric
Sample type	Tissue, Adherent cells, Tissue Homogenate, Tissue Lysate
Assay type	Enzyme activity (quantitative)
Sensitivity	50 μ U
Product overview	The Sorbitol Dehydrogenase Activity Assay Kit (Colorimetric)(ab252902) provides a quick and easy way for monitoring SDH activity in various samples. In this Assay, Sorbitol Dehydrogenase utilizes a provided substrate while reducing NAD^+ to form NADH. NADH reacts with the developer, leading to the formation of a chromophore with strong absorbance at OD 450 nm. The assay is simple, sensitive and can detect Sorbitol Dehydrogenase Activity less than 50 μ U in variety of samples.
Notes	This product is manufactured by BioVision, an Abcam company and was previously called K935 Sorbitol Dehydrogenase Activity Assay Kit (Colorimetric). K935-100 is the same size as the 100 test size of ab252902.
Platform	Microplate

Properties

Storage instructions Store at -20°C . Please refer to protocols.

Components	100 tests
NADH Standard	1 vial
SDH Assay Buffer	1 x 25ml
SDH Developer	1 vial
SDH Positive Control	1 vial
SDH Substrate	1 x 200 μ l

Function

Converts sorbitol to fructose. Part of the polyol pathway that plays an important role in sperm physiology. May play a role in the sperm motility by providing an energetic source for sperm.

Tissue specificity

Expressed in kidney and epithelial cells of both benign and malignant prostate tissue. Expressed in epididymis (at protein level).

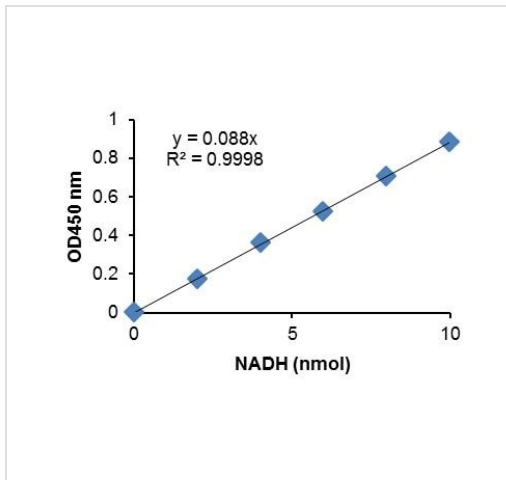
Sequence similarities

Belongs to the zinc-containing alcohol dehydrogenase family.

Cellular localization

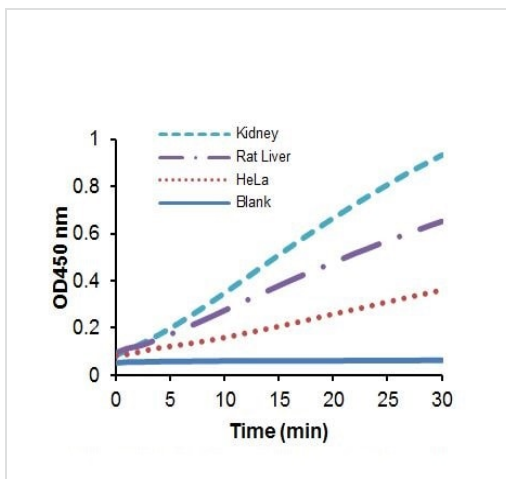
Mitochondrion membrane. Cell projection > cilium > flagellum. Associated with mitochondria of the midpiece and near the plasma membrane in the principal piece of the flagellum. Also found in the epididymosome, secreted by the epididymal epithelium and that transfers proteins from the epididymal fluid to the sperm surface.

Images



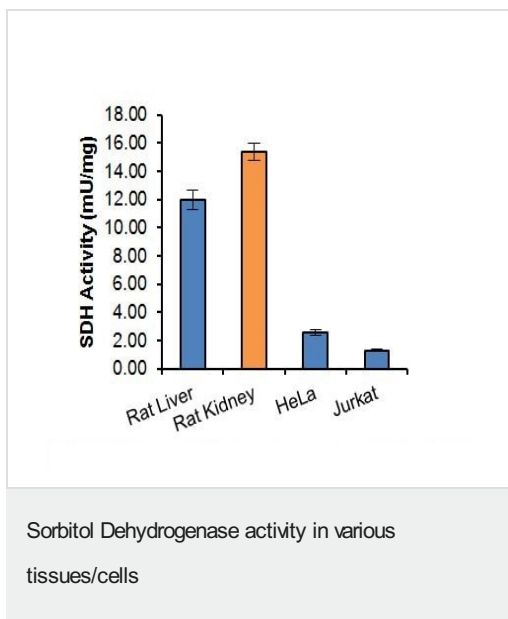
NADH standard curve.

NADH standard curve.



Kinetic measurement of Sorbitol Dehydrogenase activity from various samples.

Kinetic measurement of Sorbitol Dehydrogenase activity from various samples.



Relative SDH Activity was calculated in lysates (μg protein) prepared from Rat Liver ($8 \mu\text{g}$), Rat Kidney ($10 \mu\text{g}$), HeLa ($42 \mu\text{g}$) and Jurkat ($73 \mu\text{g}$).

Please note: All products are "FOR RESEARCH USE ONLY. NOT FOR USE IN DIAGNOSTIC PROCEDURES"

Our Abpromise to you: Quality guaranteed and expert technical support

- Replacement or refund for products not performing as stated on the datasheet
- Valid for 12 months from date of delivery
- Response to your inquiry within 24 hours
- We provide support in Chinese, English, French, German, Japanese and Spanish
- Extensive multi-media technical resources to help you
- We investigate all quality concerns to ensure our products perform to the highest standards

If the product does not perform as described on this datasheet, we will offer a refund or replacement. For full details of the Abpromise, please visit <https://www.abcam.com/abpromise> or contact our technical team.

Terms and conditions

- Guarantee only valid for products bought direct from Abcam or one of our authorized distributors