

Product datasheet

PF 670462, casein kinase 1epsilon (CK1epsilon) and CK1delta inhibitor ab120985

[1 Image](#)

Overview

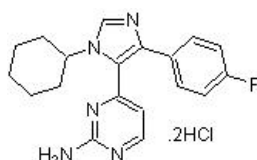
Product name	PF 670462, casein kinase 1epsilon (CK1epsilon) and CK1delta inhibitor
Description	Potent, selective casein kinase 1ε (CK1ε) and CK1δ inhibitor
Biological description	Potent, selective casein kinase 1ε (CK1ε) and CK1δ inhibitor (IC ₅₀ values are 7.7 and 14 nM for CK1ε and CK1δ, respectively). Shows >300-fold selectivity over CK2 and selectivity over more than 40 other kinases. Alters circadian rhythms <i>in vivo</i> .

Also available in simple stock solutions ([ab146728](#)) - add 1 ml of water to get an exact, ready-to-use concentration.

Purity > 99%

CAS Number 950912-80-8

Chemical structure



Properties

Chemical name	4-[1-Cyclohexyl-4-(4-fluorophenyl)-1H-imidazol-5-yl]-2-pyrimidinamine dihydrochloride
Molecular weight	410.32
Molecular formula	C ₁₉ H ₂₀ FN ₅ .2HCl
PubChem identifier	51049607
Storage instructions	Store at Room Temperature. Store under desiccating conditions. The product can be stored for up to 12 months.
Solubility overview	Soluble in water to 100 mM and in DMSO to 100 mM
Handling	Wherever possible, you should prepare and use solutions on the same day. However, if you need to make up stock solutions in advance, we recommend that you store the solution as aliquots in tightly sealed vials at -20°C. Generally, these will be useable for up to one month. Before use, and prior to opening the vial we recommend that you allow your product to equilibrate to room temperature for at least 1 hour.

Need more advice on solubility, usage and handling? Please visit our [frequently asked questions \(FAQ\) page](#) for more details.

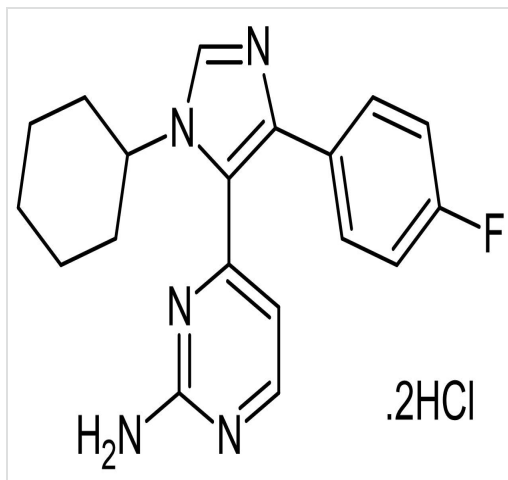
SMILES

Cl.C1.Nc1nccc(n1)c3c(ncn3C2CCCCC2)c4ccc(F)cc4

Source

Synthetic

Images



2D chemical structure image of ab120985, PF 670462, casein kinase 1epsilon (CK1epsilon) and CK1delta inhibitor

Chemical Structure - PF 670462, casein kinase 1epsilon (CK1epsilon) and CK1delta inhibitor (ab120985)

Please note: All products are "FOR RESEARCH USE ONLY. NOT FOR USE IN DIAGNOSTIC PROCEDURES, NOT FOR USE IN HUMANS"

Our Abpromise to you: Quality guaranteed and expert technical support

- Replacement or refund for products not performing as stated on the datasheet
- Valid for 12 months from date of delivery
- Response to your inquiry within 24 hours
- We provide support in Chinese, English, French, German, Japanese and Spanish
- Extensive multi-media technical resources to help you
- We investigate all quality concerns to ensure our products perform to the highest standards

If the product does not perform as described on this datasheet, we will offer a refund or replacement. For full details of the Abpromise, please visit <https://www.abcam.com/abpromise> or contact our technical team.

Terms and conditions

- Guarantee only valid for products bought direct from Abcam or one of our authorized distributors
- Abcam biochemicals are novel compounds and we have not tested their biological activity in house. Please use the literature to identify how to use these products effectively. If you require further assistance please contact the scientific support team