

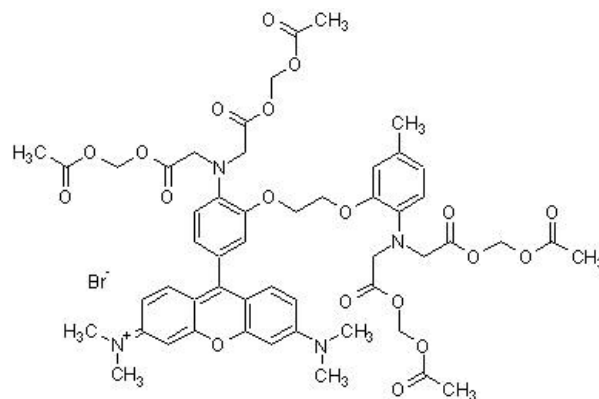
### Rhod-2 AM, fluorescent Ca<sup>2+</sup> indicator ab142780

★★★★★ [3 Abreviews](#) [15 References](#) [1 Image](#)

#### Overview

<b>Product name</b>	Rhod-2 AM, fluorescent Ca <sup>2+</sup> indicator
<b>Description</b>	Cell-permeable fluorescent Ca <sup>2+</sup> indicator
<b>Purity</b>	> 93%
<b>General notes</b>	The Ester Rhod-2 once hydrolyzed by cellular endogenous esterases will bind Ca <sup>2+</sup> and localizes to mitochondria,
<b>CAS Number</b>	145037-81-6

#### Chemical structure



#### Properties

<b>Excitation</b>	552nm
<b>Emission</b>	581nm
<b>Chemical name</b>	9-[4-[Bis[2-[(acetoxymethoxy)-2-oxoethyl]amino]-3-[2-[2-bis[2-[(acetoxymethoxy)-2-oxoethyl]amino]-5-methylphenoxy]ethoxy]phenyl]-3,6-bis(dimethylamino)xanthylum bromide
<b>Molecular weight</b>	1123.96
<b>Molecular formula</b>	C <sub>52</sub> H <sub>59</sub> BrN <sub>4</sub> O <sub>19</sub>
<b>PubChem identifier</b>	25229581
<b>Storage instructions</b>	Store at -20°C. It is important to note that this product is reported to be light sensitive. Store In the Dark. Store under desiccating conditions.
<b>Solubility overview</b>	Soluble in DMSO to 1 mg/ml
<b>Handling</b>	Wherever possible, you should prepare and use solutions on the same day. However, if you need

to make up stock solutions in advance, we recommend that you store the solution as aliquots in tightly sealed vials at -20°C. Generally, these will be useable for up to one month. Before use, and prior to opening the vial we recommend that you allow your product to equilibrate to room temperature for at least 1 hour.

For more information on AM esters please visit our [AM esters FAQ page](#).

Need more advice on solubility, usage and handling? Please visit our [frequently asked questions \(FAQ\) page](#) for more details.

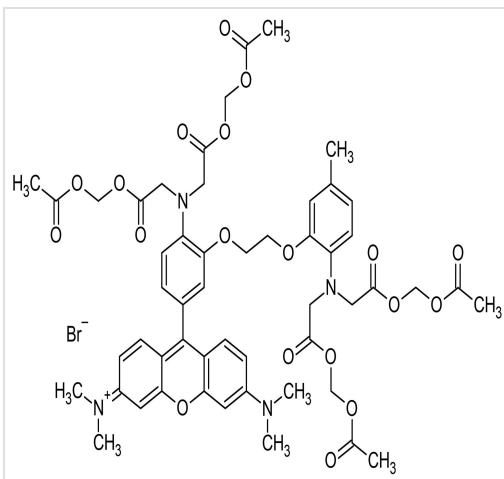
## SMILES

```
CC1=CC(=C(C=C1)N(CC(=O)OCOC(=O)C)CC(=O)OCOC(=O)C)OCCOC2=CC(=C3C4=C(C=C(C=C4)N(C)C)OC5=C3C=CC(=C5)N(C)C)C=CC2=[N+](CC(=O)OCOC(=O)C)CC(=O)OCOC(=O)C.[Br-]
```

## Source

Synthetic

## Images



2D chemical structure image of ab142780, Rhod-2 AM, fluorescent Ca<sup>2+</sup> indicator

Chemical Structure - Rhod-2 AM, fluorescent Ca<sup>2+</sup> indicator (ab142780)

**Please note:** All products are "FOR RESEARCH USE ONLY. NOT FOR USE IN DIAGNOSTIC PROCEDURES, NOT FOR USE IN HUMANS"

## Our Abpromise to you: Quality guaranteed and expert technical support

- Replacement or refund for products not performing as stated on the datasheet
- Valid for 12 months from date of delivery
- Response to your inquiry within 24 hours
- We provide support in Chinese, English, French, German, Japanese and Spanish
- Extensive multi-media technical resources to help you
- We investigate all quality concerns to ensure our products perform to the highest standards

If the product does not perform as described on this datasheet, we will offer a refund or replacement. For full details of the Abpromise, please visit <https://www.abcam.com/abpromise> or contact our technical team.

## Terms and conditions

---

- Guarantee only valid for products bought direct from Abcam or one of our authorized distributors
- Abcam biochemicals are novel compounds and we have not tested their biological activity in house. Please use the literature to identify how to use these products effectively. If you require further assistance please contact the scientific support team