

Product datasheet

Ro 31-8220 mesylate (Bisindolylmaleimide IX), Protein kinase inhibitor ab120374

[1 References](#) [2 Images](#)

Overview

Product name	Ro 31-8220 mesylate (Bisindolylmaleimide IX), Protein kinase inhibitor
Description	Protein kinase inhibitor
Biological description	Widely used as a cell-permeable, reversible, competitive protein kinase C inhibitor. Also potently inhibits wide range of kinases including RSK1, RSK2, PRK2, PKC α , PKD1, MSK1, GSK3 β , CDK2-cyclin A and PIM3, as well as PKC α .

Also available in simple stock solutions ([ab146723](#)) - add 1 ml of water to get an exact, ready-to-use concentration.

Purity > 98%

CAS Number 138489-18-6

Chemical structure



Properties

Chemical name	3-[1-[3-(Amidinothio)propyl]-3-indolyl]-4-(1-methyl-3-indolyl)-1 <i>H</i> -pyrrole-2,5-dione methanesulfonate
Molecular weight	553.65
PubChem identifier	11628205
Storage instructions	Store at -20°C. Store under desiccating conditions. The product can be stored for up to 12 months.
Solubility overview	Soluble in DMSO and organic solvents. Solubility in these solvents is approximately 20 mg/mL.
Handling	Wherever possible, you should prepare and use solutions on the same day. However, if you need to make up stock solutions in advance, we recommend that you store the solution as aliquots in tightly sealed vials at -20°C. Generally, these will be useable for up to one month. Before use, and prior to opening the vial we recommend that you allow your product to equilibrate to room

temperature for at least 1 hour.

Need more advice on solubility, usage and handling? Please visit our [frequently asked questions \(FAQ\) page](#) for more details.

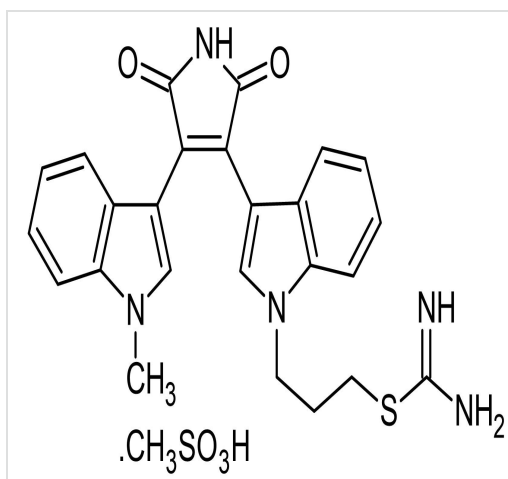
SMILES

CS(=O)(=O)O.Cn2cc(c1cccc12)C=5C(=O)NC(=O)C=5c4cn(CCCSC(=N)N)c3cccc34

Source

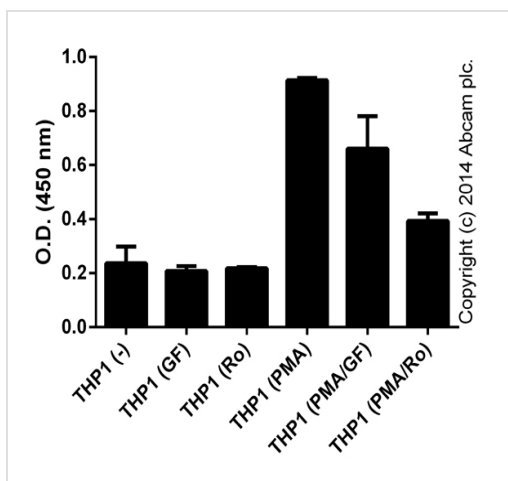
Synthetic

Images



2D chemical structure image of ab120374, Ro 31-8220 mesylate (Bisindolylmaleimide IX), Protein kinase inhibitor

Chemical Structure - Ro 31-8220 mesylate (Bisindolylmaleimide IX), Protein kinase inhibitor (ab120374)



Functional Studies - Ro 31-8220 mesylate (Bisindolylmaleimide IX), Protein kinase inhibitor (ab120374)

1.5 x 10⁷ THP-1 cells were incubated with 100 nM GF 109203X ([ab144264](#)) or Ro 31-8220 mesylate (ab120374) for 30 minutes prior to activation with 10 µg x mL⁻¹ PMA (Sigma) for 4 hours. Control cells were left without inhibitors or PMA. Cells were lysed in 1 mL of lysis buffer, and 30 µL were tested for PKC activity (duplicates; +/- SD).

Please note: All products are "FOR RESEARCH USE ONLY. NOT FOR USE IN DIAGNOSTIC PROCEDURES, NOT FOR USE IN HUMANS"

Our Abpromise to you: Quality guaranteed and expert technical support

- Replacement or refund for products not performing as stated on the datasheet
- Valid for 12 months from date of delivery
- Response to your inquiry within 24 hours

- We provide support in Chinese, English, French, German, Japanese and Spanish
- Extensive multi-media technical resources to help you
- We investigate all quality concerns to ensure our products perform to the highest standards

If the product does not perform as described on this datasheet, we will offer a refund or replacement. For full details of the Abpromise, please visit <https://www.abcam.com/abpromise> or contact our technical team.

Terms and conditions

- Guarantee only valid for products bought direct from Abcam or one of our authorized distributors
- Abcam biochemicals are novel compounds and we have not tested their biological activity in house. Please use the literature to identify how to use these products effectively. If you require further assistance please contact the scientific support team