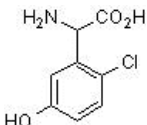


Product datasheet

(R,S)-CHPG, mGlu5 agonist ab120039

[3 References](#) [2 Images](#)

Overview

Product name	(R,S)-CHPG, mGlu5 agonist
Description	Selective mGlu ₅ agonist
Biological description	Selective mGlu ₅ receptor agonist. Water soluble form available - see (ab120221)
CAS Number	170846-74-9
Chemical structure	

Properties

Chemical name	(R,S)-2-Amino-2-(2-chloro-5-hydroxyphenyl)acetic acid
Molecular weight	201.61
Molecular formula	C ₈ H ₈ NO ₃ Cl
PubChem identifier	3645780
Storage instructions	Store at +4°C. Store under desiccating conditions. The product can be stored for up to 12 months.
Solubility overview	Soluble in 1 eq. NaOH to 100 mM
Handling	<p>Wherever possible, you should prepare and use solutions on the same day. However, if you need to make up stock solutions in advance, we recommend that you store the solution as aliquots in tightly sealed vials at -20°C. Generally, these will be useable for up to one month. Before use, and prior to opening the vial we recommend that you allow your product to equilibrate to room temperature for at least 1 hour.</p> <p>Refer to SDS for further information.</p> <p>Need more advice on solubility, usage and handling? Please visit our frequently asked questions (FAQ) page for more details.</p>
SMILES	NC(c1cc(O)ccc1Cl)C(=O)O
Source	Synthetic

Applications

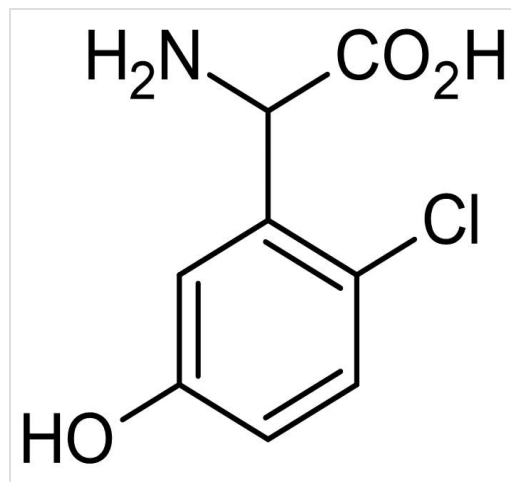
The Abpromise guarantee

Our **Abpromise guarantee** covers the use of ab120039 in the following tested applications.

The application notes include recommended starting dilutions; optimal dilutions/concentrations should be determined by the end user.

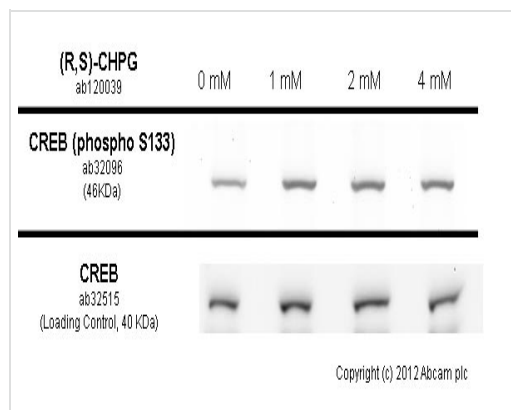
Application	Abreviews	Notes
Functional Studies		Use at an assay dependent concentration.

Images



2D chemical structure image of ab120039, (R,S)-CHPG, mGlu5 agonist

Chemical Structure - (R,S)-CHPG, mGlu₅ agonist
(ab120039)



Functional Studies - (R,S)-CHPG, mGlu₅ agonist
(ab120039)

SK-N-SH cells were incubated at 37°C for 30 minutes with vehicle control (0 μ M) and different concentrations of (R,S)-CHPG (ab120039). Increased expression of CREB (phospho S133) in SK-N-SH cells correlates with an increase in (R,S)-CHPG concentration, as described in literature.

Whole cell lysates were prepared with RIPA buffer (containing protease inhibitors and sodium orthovanadate), 20 μ g of each were loaded on the gel and the WB was run under reducing conditions. After transfer the membrane was blocked for an hour using 3% milk before being incubated with **ab32096** at 1/500 dilution and **ab32515** at 1 μ g/ml overnight at 4°C. Antibody binding was detected using an anti-rabbit antibody conjugated to HRP (**ab97051**) at 1/10000 dilution and visualised using ECL development solution.

Please note: All products are "FOR RESEARCH USE ONLY. NOT FOR USE IN DIAGNOSTIC PROCEDURES, NOT FOR USE IN HUMANS"

Our Abpromise to you: Quality guaranteed and expert technical support

- Replacement or refund for products not performing as stated on the datasheet
- Valid for 12 months from date of delivery
- Response to your inquiry within 24 hours
- We provide support in Chinese, English, French, German, Japanese and Spanish
- Extensive multi-media technical resources to help you
- We investigate all quality concerns to ensure our products perform to the highest standards

If the product does not perform as described on this datasheet, we will offer a refund or replacement. For full details of the Abpromise, please visit <https://www.abcam.com/abpromise> or contact our technical team.

Terms and conditions

- Guarantee only valid for products bought direct from Abcam or one of our authorized distributors
- Abcam biochemicals are novel compounds and we have not tested their biological activity in house. Please use the literature to identify how to use these products effectively. If you require further assistance please contact the scientific support team