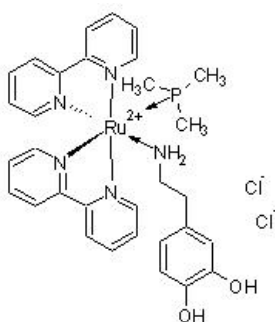


RuBi-Dopa, caged-dopamine compound ab143462

[1 References](#) [1 Image](#)

Overview

Product name	RuBi-Dopa, caged-dopamine compound
Description	Novel caged-dopamine compound, uncaged by visible and IR light
Chemical structure	

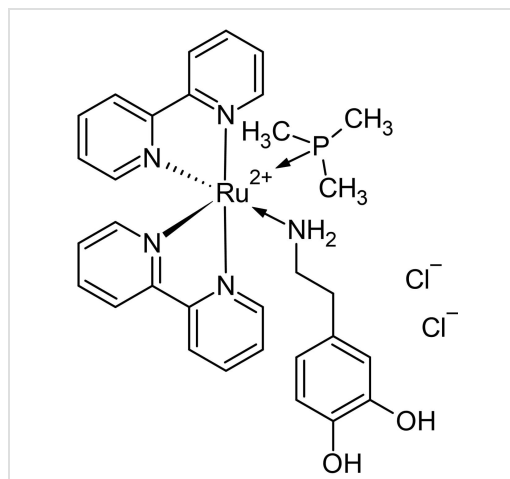


Properties

Chemical name	[Bis(2,2'-bipyridine- <i>N,N'</i>)trimethylphosphine]-2-(3,4-dihydroxyphenyl)ethylamine ruthenium II dichloride
Molecular weight	713.61
Molecular formula	C ₃₁ H ₃₆ Cl ₂ N ₅ O ₂ PRu
Storage instructions	Store at -20°C. It is important to note that this product is reported to be light sensitive. Store In the Dark. Store under desiccating conditions.
Solubility overview	Soluble in water to 100 mM
Handling	Unstable; make up solutions fresh and use immediately. Need more advice on solubility, usage and handling? Please visit our frequently asked questions (FAQ) page for more details.
Source	Synthetic

Images

2D chemical structure image of ab143462, RuBi-Dopa, caged-dopamine compound



Chemical Structure - RuBi-Dopa, caged-dopamine compound (ab143462)

Please note: All products are "FOR RESEARCH USE ONLY. NOT FOR USE IN DIAGNOSTIC PROCEDURES, NOT FOR USE IN HUMANS"

Our Abpromise to you: Quality guaranteed and expert technical support

- Replacement or refund for products not performing as stated on the datasheet
- Valid for 12 months from date of delivery
- Response to your inquiry within 24 hours
- We provide support in Chinese, English, French, German, Japanese and Spanish
- Extensive multi-media technical resources to help you
- We investigate all quality concerns to ensure our products perform to the highest standards

If the product does not perform as described on this datasheet, we will offer a refund or replacement. For full details of the Abpromise, please visit <https://www.abcam.com/abpromise> or contact our technical team.

Terms and conditions

- Guarantee only valid for products bought direct from Abcam or one of our authorized distributors
- Abcam biochemicals are novel compounds and we have not tested their biological activity in house. Please use the literature to identify how to use these products effectively. If you require further assistance please contact the scientific support team