

## Product datasheet

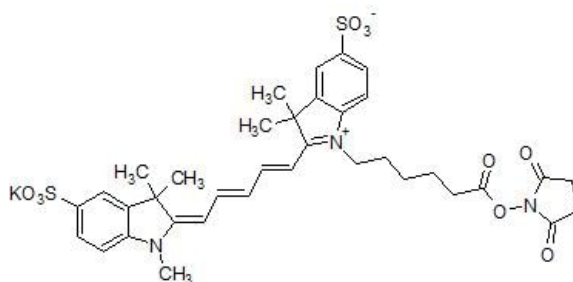
# Sulfo-Cyanine5 NHS ester, Amine-reactive red emitting fluorescent dye ab146459

[2 References](#) [1 Image](#)

### Overview

<b>Product name</b>	Sulfo-Cyanine5 NHS ester, Amine-reactive red emitting fluorescent dye
<b>Description</b>	Water soluble amine reactive red emitting fluorescent dye.
<b>Biological description</b>	Water soluble amine reactive red emitting fluorescent dye. Used for the labeling of various amine-containing molecules in aqueous phase without use of any organic co-solvent. Useful for the labeling of proteins which denature in the presence of organic co-solvents, as well as for proteins with low solubility.

<b>Purity</b>	> 95%
<b>CAS Number</b>	2230212-27-6
<b>Chemical structure</b>	



### Properties

<b>Excitation</b>	646nm
<b>Emission</b>	662nm
<b>Chemical name</b>	Potassium 1-[6-(2,5-dioxopyrrolidin-1-yloxy)-6-oxohexyl]-3,3-dimethyl-2-[(1 <i>E</i> ,3 <i>E</i> ,5 <i>E</i> )-5-(1,3,3-trimethyl-5-sulfonatoindolin-2-ylidene)penta-1,3-dienyl]-3 <i>H</i> -indolium-5-sulfonate
<b>Molecular weight</b>	777.94
<b>Molecular formula</b>	C <sub>36</sub> H <sub>40</sub> N <sub>3</sub> KO <sub>10</sub> S <sub>2</sub>
<b>Storage instructions</b>	Store at -20°C. It is important to note that this product is reported to be light sensitive. Store In the Dark. Store under desiccating conditions.

## Solubility overview

Soluble in DMSO and in water

## Handling

Wherever possible, you should prepare and use solutions on the same day. However, if you need to make up stock solutions in advance, we recommend that you store the solution as aliquots in tightly sealed vials at -20°C. Generally, these will be useable for up to one month. Before use, and prior to opening the vial we recommend that you allow your product to equilibrate to room temperature for at least 1 hour.

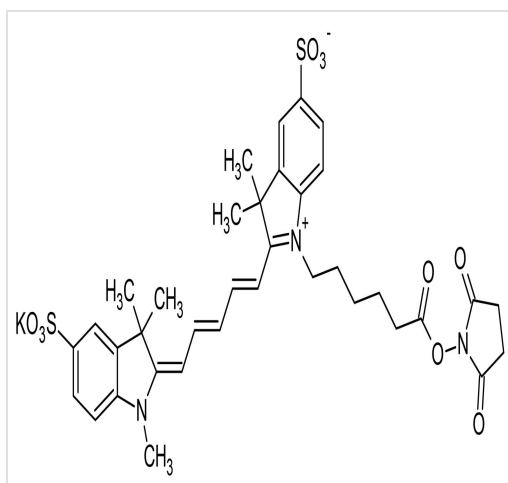
Refer to SDS for further information.

Need more advice on solubility, usage and handling? Please visit our [frequently asked questions \(FAQ\) page](#) for more details.

## Source

Synthetic

## Images



2D chemical structure image of ab146459, Sulfo-Cyanine5 NHS ester, Amine-reactive red emitting fluorescent dye

Chemical Structure - Sulfo-Cyanine5 NHS ester,  
Amine-reactive red emitting fluorescent dye  
(ab146459)

**Please note:** All products are "FOR RESEARCH USE ONLY. NOT FOR USE IN DIAGNOSTIC PROCEDURES, NOT FOR USE IN HUMANS"

## Our Abpromise to you: Quality guaranteed and expert technical support

- Replacement or refund for products not performing as stated on the datasheet
- Valid for 12 months from date of delivery
- Response to your inquiry within 24 hours
- We provide support in Chinese, English, French, German, Japanese and Spanish
- Extensive multi-media technical resources to help you
- We investigate all quality concerns to ensure our products perform to the highest standards

If the product does not perform as described on this datasheet, we will offer a refund or replacement. For full details of the Abpromise, please visit <https://www.abcam.com/abpromise> or contact our technical team.

## Terms and conditions

---

- Guarantee only valid for products bought direct from Abcam or one of our authorized distributors
- Abcam biochemicals are novel compounds and we have not tested their biological activity in house. Please use the literature to identify how to use these products effectively. If you require further assistance please contact the scientific support team