

Proteinase K Antigen Retrieval Solution ab64220

★★★★★ [1 Abreviews](#) [24 References](#) [1 Image](#)

Overview

Product name	Proteinase K Antigen Retrieval Solution
Tested applications	Suitable for: IHC-P, In situ hybridization
General notes	ab64220 is a single-component, ready-to-use proteinase K solution for use in protease-induced antigen retrieval during IHC (PIER) and pre-treatment for in situ hybridization.

Staining Protocol:

IHC procedure: Incubate tissue section for 5 to 7 minutes at room temperature; Rinse and proceed with immunostaining.

General ISH procedure: Incubate tissue section for 15 minutes at 37°C; Rinse and proceed with hybridization.

Other products for IHC

Other enzymes for antigen retrieval include: [Pepsin Solution ab64201](#) and [Trypsin Antigen Retrieval Kit ab259256](#).

Find more kits and reagents for antigen retrieval, blocking, signal amplification, visualization, counterstaining, and mounting in the [IHC kits and reagents guide](#).

Properties

Form	Liquid
Storage instructions	Store at -20°C. Stable for 12 months at -20°C
Storage buffer	pH: 7 Preservative: 0.1% Sodium azide Constituents: Tris buffer, 10% Glycerol (glycerin, glycerine)
Relevance	Proteinase K is an endolytic protease that cleaves peptide bonds preferentially next to the carboxyl group of N-substituted hydrophobic aliphatic and aromatic amino acids. Proteinase K is classified as a serine protease and exhibits broad substrate specificity. It can hydrolyze keratin; hence the name. Proteinase K is used for the digestion of proteins on tissue sections as a pre-treatment to aid in the preparation of mRNA and its detection by in situ hybridisation methods using oligonucleotide probes.

Applications

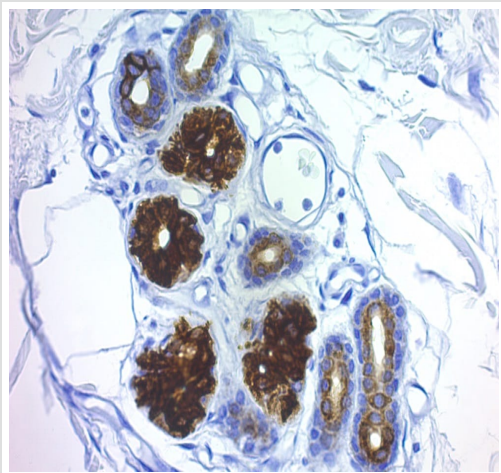
The Abpromise guarantee

Our **Abpromise guarantee** covers the use of ab64220 in the following tested applications.

The application notes include recommended starting dilutions; optimal dilutions/concentrations should be determined by the end user.

Application	Abreviews	Notes
IHC-P		Use at an assay dependent dilution.
In situ hybridization		Use at an assay dependent dilution.

Images



ab64220 Proteinase K used with aa anti-Pan CK antibody on Human skin

Immunohistochemistry (Formalin/PFA-fixed paraffin-embedded sections) - Proteinase K (ab64220)

Please note: All products are "FOR RESEARCH USE ONLY. NOT FOR USE IN DIAGNOSTIC PROCEDURES"

Our Abpromise to you: Quality guaranteed and expert technical support

- Replacement or refund for products not performing as stated on the datasheet
- Valid for 12 months from date of delivery
- Response to your inquiry within 24 hours
- We provide support in Chinese, English, French, German, Japanese and Spanish
- Extensive multi-media technical resources to help you
- We investigate all quality concerns to ensure our products perform to the highest standards

If the product does not perform as described on this datasheet, we will offer a refund or replacement. For full details of the Abpromise, please visit <https://www.abcam.com/abpromise> or contact our technical team.

Terms and conditions

- Guarantee only valid for products bought direct from Abcam or one of our authorized distributors