

Human FER knockout HeLa cell line ab265226

2 Images

Overview

| | |
|-----------------------------|---|
| Product name | Human FER knockout HeLa cell line |
| Parental Cell Line | HeLa |
| Organism | Human |
| Mutation description | Knockout achieved by using CRISPR/Cas9, Homozygous: 13 bp deletion in exon 4 |
| Passage number | <20 |
| Knockout validation | Sanger Sequencing, Western Blot (WB) |
| Tested applications | Suitable for: WB |
| Biosafety level | 2 |
| General notes | <p>Recommended control: Human wild-type HeLa cell line (ab255928). Please note a wild-type cell line is not automatically included with a knockout cell line order, if required please add recommended wild-type cell line at no additional cost using the code WILDTYPE-TMTK1.</p> <p>Cryopreservation cell medium: Cell Freezing Medium-DMSO Serum free media, contains 8.7% DMSO in MEM supplemented with methyl cellulose.</p> <p>Culture medium: DMEM (High Glucose) + 10% FBS</p> <p>Initial handling guidelines: Upon arrival, the vial should be stored in liquid nitrogen vapor phase and not at -80°C. Storage at -80°C may result in loss of viability.</p> <ol style="list-style-type: none">1. Thaw the vial in 37°C water bath for approximately 1-2 minutes.2. Transfer the cell suspension (0.8 mL) to a 15 mL/50 mL conical sterile polypropylene centrifuge tube containing 8.4 mL pre-warmed culture medium, wash vial with an additional 0.8 mL culture medium (total volume 10 mL) to collect remaining cells, and centrifuge at 201 x g (rcf) for 5 minutes at room temperature. 10 mL represents minimum recommended dilution. 20 mL represents maximum recommended dilution.3. Resuspend the cell pellet in 5 mL pre-warmed culture medium and count using a haemocytometer or alternative cell counting method. Based on cell count, seed cells in an appropriate cell culture flask at a density of 2×10^4 cells/cm². Seeding density is given as a guide only and should be scaled to align with individual lab schedules.4. Incubate the culture at 37°C incubator with 5% CO₂. Cultures should be monitored daily. <p>Subculture guidelines:</p> <p>All seeding densities should be based on cell counts gained by established methods. A guide seeding density of 2×10^4 cells/cm² is recommended.</p> <p>A partial media change 24 hours prior to subculture may be helpful to encourage growth, if required.</p> |

Cells should be passaged when they have achieved 80-90% confluence.

This product is subject to limited use licenses from The Broad Institute and ERS Genomics Limited, and is developed with patented technology. For full details of the limited use licenses and relevant patents please refer to our [limited use license](#) and [patent pages](#).

We will provide viable cells that proliferate on revival.

Properties

| | |
|-----------------------------|---|
| Number of cells | 1 x 10 ⁶ cells/vial, 1 mL |
| Adherent /Suspension | Adherent |
| Tissue | Cervix |
| Cell type | epithelial |
| Disease | Adenocarcinoma |
| Gender | Female |
| STR Analysis | Amelogenin X D5S818: 11, 12 D13S317: 12, 13.3 D7S820: 8, 12 D16S539: 9, 10 WWA: 16, 18 TH01: 7 TPOX: 8,12 CSF1PO: 9, 10 |
| Mycoplasma free | Yes |
| Storage instructions | Shipped on Dry Ice. Store in liquid nitrogen. |
| Storage buffer | Constituents: 8.7% Dimethylsulfoxide, 2% Cellulose, methyl ether |

Target

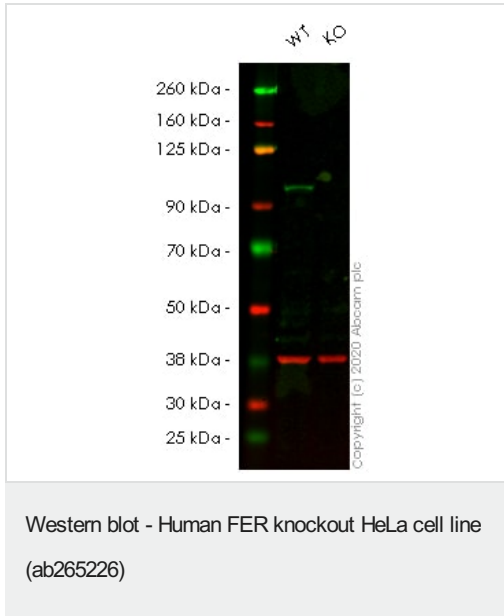
| | |
|------------------------------|---|
| Function | Tyrosine kinase of the non-receptor type. Probably performs an important function, perhaps in regulatory processes such as cell cycle control. |
| Tissue specificity | Expressed in a variety of lymphoid cell lines. |
| Sequence similarities | Belongs to the protein kinase superfamily. Tyr protein kinase family. Fes/fps subfamily. Contains 1 FCH domain. Contains 1 protein kinase domain. Contains 1 SH2 domain. |
| Cellular localization | Cytoplasm. Nucleus. Associated with the chromatin. |

Applications

The Abpromise guarantee Our [Abpromise guarantee](#) covers the use of ab265226 in the following tested applications. The application notes include recommended starting dilutions; optimal dilutions/concentrations should be determined by the end user.

| Application | Abreviews | Notes |
|-------------|-----------|--|
| WB | | Use at an assay dependent concentration. Predicted molecular weight: 95 kDa. |

Images



All lanes : Anti-FER antibody [EP1842Y] (**ab52479**) at 1/1000 dilution

Lane 1 : Wild-type HeLa cell lysate

Lane 2 : FER knockout HeLa cell lysate

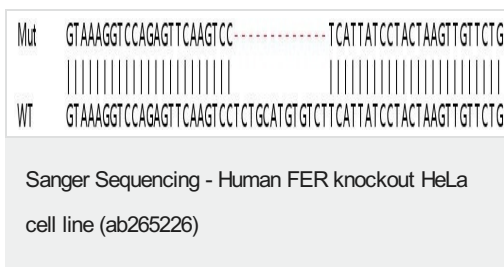
Lysates/proteins at 20 µg per lane.

Performed under reducing conditions.

Predicted band size: 95 kDa

Lanes 1 - 2: Merged signal (red and green). Green - **ab52479** observed at 100 kDa. Red - loading control **ab8245** (Mouse anti-GAPDH antibody [6C5]) observed at 37kDa.

ab52479 was shown to react with FER in wild-type HeLa cells in Western blot with loss of signal observed in FER knockout cell line ab265226 (FER knockout cell lysate **ab257950**). Wild-type HeLa and FER knockout cell lysates were subjected to SDS-PAGE. Membranes were blocked in 3 % milk in TBS-T (0.1 % Tween®) before incubation with **ab52479** and **ab8245** (Mouse anti-GAPDH antibody [6C5]) overnight at 4 °C at a 1 in 1000 dilution and a 1 in 20000 dilution respectively. Blots were incubated with Goat anti-Rabbit IgG H&L (IRDye® 800CW) preabsorbed (**ab216773**) and Goat anti-Mouse IgG H&L (IRDye® 680RD) preabsorbed (**ab216776**) secondary antibodies at 1 in 20000 dilution for 1 h at room temperature before imaging.



Homozygous: 13 bp deletion in exon 4.

Please note: All products are "FOR RESEARCH USE ONLY. NOT FOR USE IN DIAGNOSTIC PROCEDURES"

Our Abpromise to you: Quality guaranteed and expert technical support

- Replacement or refund for products not performing as stated on the datasheet
- Valid for 12 months from date of delivery

- Response to your inquiry within 24 hours
- We provide support in Chinese, English, French, German, Japanese and Spanish
- Extensive multi-media technical resources to help you
- We investigate all quality concerns to ensure our products perform to the highest standards

If the product does not perform as described on this datasheet, we will offer a refund or replacement. For full details of the Abpromise, please visit <https://www.abcam.com/abpromise> or contact our technical team.

Terms and conditions

- Guarantee only valid for products bought direct from Abcam or one of our authorized distributors