

### Human OGFR knockout HeLa cell line ab266037

1 Image

#### Overview

<b>Product name</b>	Human OGFR knockout HeLa cell line
<b>Parental Cell Line</b>	HeLa
<b>Organism</b>	Human
<b>Mutation description</b>	Knockout achieved by using CRISPR/Cas9, Homozygous: 1 bp deletion in exon 3
<b>Passage number</b>	<20
<b>Knockout validation</b>	Sanger Sequencing
<b>Biosafety level</b>	2
<b>General notes</b>	<p><b>Recommended control:</b> Human wild-type HeLa cell line (<a href="#">ab255928</a>). Please note a wild-type cell line is not automatically included with a knockout cell line order, if required please add recommended wild-type cell line at no additional cost using the code WILDTYPE-TMTK1.</p> <p><b>Cryopreservation cell medium:</b> Cell Freezing Medium-DMSO Serum free media, contains 8.7% DMSO in MEM supplemented with methyl cellulose.</p> <p><b>Culture medium:</b> DMEM (High Glucose) + 10% FBS</p> <p><b>Initial handling guidelines:</b> Upon arrival, the vial should be stored in liquid nitrogen vapor phase and not at -80°C. Storage at -80°C may result in loss of viability.</p> <ol style="list-style-type: none"> <li>1. Thaw the vial in 37°C water bath for approximately 1-2 minutes.</li> <li>2. Transfer the cell suspension (0.8 mL) to a 15 mL/50 mL conical sterile polypropylene centrifuge tube containing 8.4 mL pre-warmed culture medium, wash vial with an additional 0.8 mL culture medium (total volume 10 mL) to collect remaining cells, and centrifuge at 201 x g (rcf) for 5 minutes at room temperature. 10 mL represents minimum recommended dilution. 20 mL represents maximum recommended dilution.</li> <li>3. Resuspend the cell pellet in 5 mL pre-warmed culture medium and count using a haemocytometer or alternative cell counting method. Based on cell count, seed cells in an appropriate cell culture flask at a density of <math>2 \times 10^4</math> cells/cm<sup>2</sup>. Seeding density is given as a guide only and should be scaled to align with individual lab schedules.</li> <li>4. Incubate the culture at 37°C incubator with 5% CO<sub>2</sub>. Cultures should be monitored daily.</li> </ol> <p><b>Subculture guidelines:</b></p> <p>All seeding densities should be based on cell counts gained by established methods. A guide seeding density of <math>2 \times 10^4</math> cells/cm<sup>2</sup> is recommended.</p> <p>A partial media change 24 hours prior to subculture may be helpful to encourage growth, if required.</p> <p>Cells should be passaged when they have achieved 80-90% confluence.</p>

This product is subject to limited use licenses from The Broad Institute and ERS Genomics Limited, and is developed with patented technology. For full details of the limited use licenses and relevant patents please refer to our [limited use license](#) and [patent pages](#).

We will provide viable cells that proliferate on revival.

## Properties

---

<b>Number of cells</b>	1 x 10 <sup>6</sup> cells/vial, 1 mL
<b>Adherent /Suspension</b>	Adherent
<b>Tissue</b>	Cervix
<b>Cell type</b>	epithelial
<b>Disease</b>	Adenocarcinoma
<b>Gender</b>	Female
<b>STR Analysis</b>	Amelogenin X D5S818: 11, 12 D13S317: 12, 13.3 D7S820: 8, 12 D16S539: 9, 10 vWA: 16, 18 TH01: 7 TPOX: 8, 12 CSF1PO: 9, 10
<b>Mycoplasma free</b>	Yes
<b>Storage instructions</b>	Shipped on Dry Ice. Store in liquid nitrogen.
<b>Storage buffer</b>	Constituents: 8.7% Dimethylsulfoxide, 2% Cellulose, methyl ether

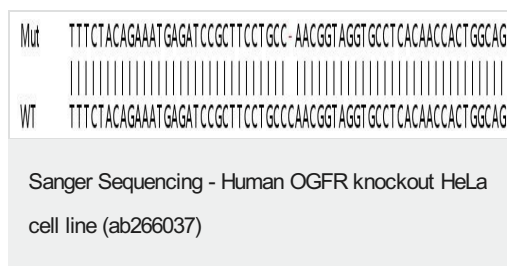
## Target

---

<b>Function</b>	Receptor for opioid growth factor (OGF), also known as Met-enkephalin. Seems to be involved in growth regulation.
<b>Tissue specificity</b>	Highly expressed in the heart and liver, moderately in skeletal muscle and kidney and to a lesser extent in brain and pancreas. Expressed in fetal tissues including liver and kidney.
<b>Sequence similarities</b>	Belongs to the opioid growth factor receptor family.
<b>Post-translational modifications</b>	Phosphorylated upon DNA damage, probably by ATM or ATR.
<b>Cellular localization</b>	Cytoplasm. Nucleus. The OGF/OGFR complex is probably translocated to the nucleus.

## Images

---



Homozygous: 1 bp deletion in exon 3

**Please note:** All products are "FOR RESEARCH USE ONLY. NOT FOR USE IN DIAGNOSTIC PROCEDURES"

## **Our Abpromise to you: Quality guaranteed and expert technical support**

---

- Replacement or refund for products not performing as stated on the datasheet
- Valid for 12 months from date of delivery
- Response to your inquiry within 24 hours
  
- We provide support in Chinese, English, French, German, Japanese and Spanish
- Extensive multi-media technical resources to help you
- We investigate all quality concerns to ensure our products perform to the highest standards

If the product does not perform as described on this datasheet, we will offer a refund or replacement. For full details of the Abpromise, please visit <https://www.abcam.com/abpromise> or contact our technical team.

## **Terms and conditions**

---

- Guarantee only valid for products bought direct from Abcam or one of our authorized distributors