

Human PRKACB (PKA beta catalytic subunit) knockout HeLa cell line ab264673

2 Images

Overview

Product name	Human PRKACB (PKA beta catalytic subunit) knockout HeLa cell line
Parental Cell Line	HeLa
Organism	Human
Mutation description	Knockout achieved by using CRISPR/Cas9, 1 bp insertion in exon 1 and 2 bp deletion in exon 1
Passage number	<20
Knockout validation	Sanger Sequencing, Western Blot (WB)
Tested applications	Suitable for: WB, Sanger Sequencing
Biosafety level	2
General notes	<p>Recommended control: Human wild-type HeLa cell line (ab255448). Please note a wild-type cell line is not automatically included with a knockout cell line order, if required please add recommended wild-type cell line at no additional cost using the code WILDTYPE-TMTK1.</p> <p>Cryopreservation cell medium: Cell Freezing Medium-DMSO Serum free media, contains 8.7% DMSO in MEM supplemented with methyl cellulose.</p> <p>Culture medium: DMEM (High Glucose) + 10% FBS</p> <p>Initial handling guidelines: Upon arrival, the vial should be stored in liquid nitrogen vapor phase and not at -80°C. Storage at -80°C may result in loss of viability.</p> <ol style="list-style-type: none"> 1. Thaw the vial in 37°C water bath for approximately 1-2 minutes. 2. Transfer the cell suspension (0.8 mL) to a 15 mL/50 mL conical sterile polypropylene centrifuge tube containing 8.4 mL pre-warmed culture medium, wash vial with an additional 0.8 mL culture medium (total volume 10 mL) to collect remaining cells, and centrifuge at 201 x g (rcf) for 5 minutes at room temperature. 10 mL represents minimum recommended dilution. 20 mL represents maximum recommended dilution. 3. Resuspend the cell pellet in 5 mL pre-warmed culture medium and count using a haemocytometer or alternative cell counting method. Based on cell count, seed cells in an appropriate cell culture flask at a density of 2×10^4 cells/cm². Seeding density is given as a guide only and should be scaled to align with individual lab schedules. 4. Incubate the culture at 37°C incubator with 5% CO₂. Cultures should be monitored daily. <p>Subculture guidelines:</p> <p>All seeding densities should be based on cell counts gained by established methods. A guide seeding density of 2×10^4 cells/cm² is recommended.</p>

A partial media change 24 hours prior to subculture may be helpful to encourage growth, if required.

Cells should be passaged when they have achieved 80-90% confluence.

This product is subject to limited use licenses from The Broad Institute, ERS Genomics Limited and Sigma-Aldrich Co. LLC, and is developed with patented technology. For full details of the licenses and patents please refer to our [limited use license](#) and [patent pages](#).

We will provide viable cells that proliferate on revival.

Properties

Number of cells	1 x 10 ⁶ cells/vial, 1 mL
Adherent /Suspension	Adherent
Tissue	Cervix
Cell type	epithelial
Disease	Adenocarcinoma
Gender	Female
STR Analysis	Amelogenin X D5S818: 11, 12 D13S317: 12, 13.3 D7S820: 8, 12 D16S539: 9, 10 WWA: 16, 18 TH01: 7 TPOX: 8, 12 CSF1PO: 9, 10
Mycoplasma free	Yes
Storage instructions	Shipped on Dry Ice. Store in liquid nitrogen.
Storage buffer	Constituents: 8.7% Dimethylsulfoxide, 2% Cellulose, methyl ether

Target

Function	Mediates cAMP-dependent signaling triggered by receptor binding to GPCRs. PKA activation regulates diverse cellular processes such as cell proliferation, the cell cycle, differentiation and regulation of microtubule dynamics, chromatin condensation and decondensation, nuclear envelope disassembly and reassembly, as well as regulation of intracellular transport mechanisms and ion flux.
Tissue specificity	Isoform 1 is most abundant in the brain, with low level expression in kidney. Isoform 2 is predominantly expressed in thymus, spleen and kidney. Isoform 3 and isoform 4 are only expressed in the brain.
Sequence similarities	Belongs to the protein kinase superfamily. AGC Ser/Thr protein kinase family. cAMP subfamily. Contains 1 AGC-kinase C-terminal domain. Contains 1 protein kinase domain.
Post-translational modifications	Asn-3 is partially deaminated to Asp giving rise to 2 major isoelectric variants, called CB and CA respectively.
Cellular localization	Cytoplasm. Nucleus. Translocates into the nucleus (monomeric catalytic subunit) (By similarity). The inactive holoenzyme is found in the cytoplasm.

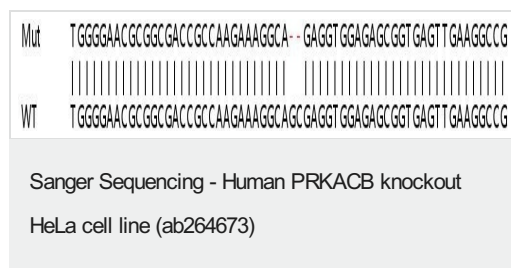
Applications

The Abpromise guarantee Our [Abpromise guarantee](#) covers the use of ab264673 in the following tested applications.

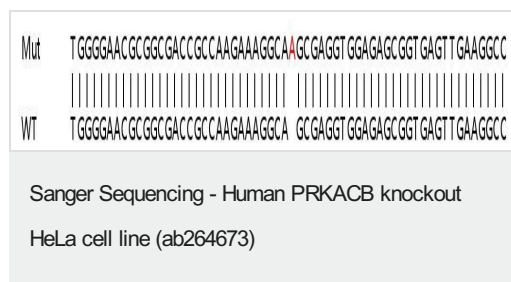
The application notes include recommended starting dilutions; optimal dilutions/concentrations should be determined by the end user.

Application	Abreviews	Notes
WB		Use at an assay dependent concentration. Predicted molecular weight: 41 kDa.
Sanger Sequencing		Use at an assay dependent concentration.

Images



Allele-1: 2 bp deletion in exon 1.



Allele-2: 1 bp insertion in exon 1.

Please note: All products are "FOR RESEARCH USE ONLY. NOT FOR USE IN DIAGNOSTIC PROCEDURES"

Our Abpromise to you: Quality guaranteed and expert technical support

- Replacement or refund for products not performing as stated on the datasheet
- Valid for 12 months from date of delivery
- Response to your inquiry within 24 hours
- We provide support in Chinese, English, French, German, Japanese and Spanish
- Extensive multi-media technical resources to help you
- We investigate all quality concerns to ensure our products perform to the highest standards

If the product does not perform as described on this datasheet, we will offer a refund or replacement. For full details of the Abpromise, please visit <https://www.abcam.com/abpromise> or contact our technical team.

Terms and conditions

- Guarantee only valid for products bought direct from Abcam or one of our authorized distributors