

Human SRSF6 (SR protein repeat) knockout HEK-293T cell line ab266529

3 Images

Overview

Product name	Human SRSF6 (SR protein repeat) knockout HEK-293T cell line
Parental Cell Line	HEK293T
Organism	Human
Mutation description	Knockout achieved by using CRISPR/Cas9, Homozygous: 1 bp insertion in exon 1
Passage number	<20
Knockout validation	Sanger Sequencing, Western Blot (WB)
Tested applications	Suitable for: WB
Biosafety level	2
General notes	<p>Recommended control: Human wild-type HEK293T cell line (ab255449). Please note a wild-type cell line is not automatically included with a knockout cell line order, if required please add recommended wild-type cell line at no additional cost using the code WILDTYPE-TMTK1.</p> <p>Cryopreservation cell medium: Cell Freezing Medium-DMSO Serum free media, contains 8.7% DMSO in MEM supplemented with methyl cellulose.</p> <p>Culture medium: DMEM (High Glucose) + 10% FBS</p> <p>Initial handling guidelines: Upon arrival, the vial should be stored in liquid nitrogen vapor phase and not at -80°C. Storage at -80°C may result in loss of viability.</p> <ol style="list-style-type: none"> 1. Thaw the vial in 37°C water bath for approximately 1-2 minutes. 2. Transfer the cell suspension (0.8 mL) to a 15 mL/50 mL conical sterile polypropylene centrifuge tube containing 8.4 mL pre-warmed culture medium, wash vial with an additional 0.8 mL culture medium (total volume 10 mL) to collect remaining cells, and centrifuge at 201 x g (rcf) for 5 minutes at room temperature. 10 mL represents minimum recommended dilution. 20 mL represents maximum recommended dilution. 3. Resuspend the cell pellet in 5 mL pre-warmed culture medium and count using a haemocytometer or alternative cell counting method. Based on cell count, seed cells in an appropriate cell culture flask at a density of 2×10^4 cells/cm². Seeding density is given as a guide only and should be scaled to align with individual lab schedules. 4. Incubate the culture at 37°C incubator with 5% CO₂. Cultures should be monitored daily. <p>Subculture guidelines:</p> <p>All seeding densities should be based on cell counts gained by established methods. A guide seeding density of 2×10^4 cells/cm² is recommended.</p>

A partial media change 24 hours prior to subculture may be helpful to encourage growth, if required.

Cells should be passaged when they have achieved 80-90% confluence.

This product is subject to limited use licenses from The Broad Institute, ERS Genomics Limited and Sigma-Aldrich Co. LLC, and is developed with patented technology. For full details of the licenses and patents please refer to our [limited use license](#) and [patent pages](#).

We will provide viable cells that proliferate on revival.

Properties

Number of cells	1 x 10 ⁶ cells/vial, 1 mL
Adherent /Suspension	Adherent
Tissue	Kidney
Cell type	epithelial
STR Analysis	Amelogenin X D5S818: 8, 9 D13S317: 12, 14 D7S820: 11 D16S539: 9, 13 vWA: 16, 19 TH01: 7, 9.3 TPOX: 11 CSF1PO: 11, 12
Mycoplasma free	Yes
Storage instructions	Shipped on Dry Ice. Store in liquid nitrogen.
Storage buffer	Constituents: 8.7% Dimethylsulfoxide, 2% Cellulose, methyl ether

Target

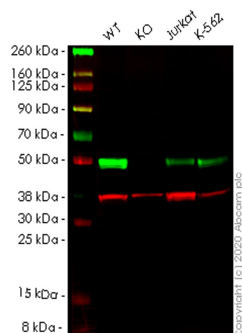
Function	Plays a role in constitutive splicing and can modulate the selection of alternative splice sites. Represses the splicing of MAPT/Tau exon 10.
Sequence similarities	Belongs to the splicing factor SR family. Contains 2 RRM (RNA recognition motif) domains.
Post-translational modifications	Extensively phosphorylated on serine residues in the RS domain.
Cellular localization	Nucleus.

Applications

The Abpromise guarantee Our [Abpromise guarantee](#) covers the use of ab266529 in the following tested applications. The application notes include recommended starting dilutions; optimal dilutions/concentrations should be determined by the end user.

Application	Abreviews	Notes
WB		Use at an assay dependent concentration. Predicted molecular weight: 40 kDa.

Images



Western blot - Human SRSF6 (SR protein repeat)
knockout HEK293T cell line (ab266529)

All lanes : Anti-SR protein repeat/SRSF6 antibody [EPR9231]
([ab140623](#)) at 1/1000 dilution

Lane 1 : Wild-type HEK293T cell lysate

Lane 2 : SRSF6 knockout HEK293T cell lysate

Lane 3 : Jurkat cell lysate

Lane 4 : K-562 cell lysate

Lysates/proteins at 20 µg per lane.

Secondary

All lanes : Goat anti-Rabbit IgG H&L (IRDye® 800CW)
preadsorbed ([ab216773](#)) at 1/10000 dilution

Predicted band size: 40 kDa

Observed band size: 48 kDa

Lanes 1-4: Merged signal (red and green). Green - [ab140623](#)
observed at 48 kDa. Red - loading control [ab8245](#) observed at 36
kDa.

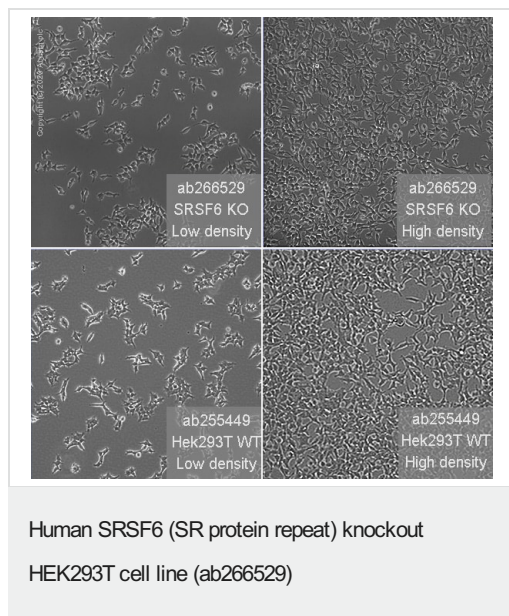
[ab140623](#) Anti-SR protein repeat/SRSF6 antibody [EPR9231]
was shown to specifically react with SR protein repeat/SRSF6 in
wild-type HEK293T cells. Loss of signal was observed when
knockout cell line ab266529 (knockout cell lysate [ab258210](#)) was
used. Wild-type and SR protein repeat/SRSF6 knockout samples
were subjected to SDS-PAGE. [ab140623](#) and Anti-GAPDH
antibody [6C5] - Loading Control ([ab8245](#)) were incubated at room
temperature for 2.5 hours at 1 in 1000 dilution and 1 in 20000
dilution respectively. Blots were developed with Goat anti-Rabbit
IgG H&L (IRDye® 800CW) preadsorbed ([ab216773](#)) and Goat anti-
Mouse IgG H&L (IRDye® 680RD) preadsorbed ([ab216776](#))
secondary antibodies at 1 in 20000 dilution for 1 hour at room
temperature before imaging.

```

Mut  GGTCCCCGCCGCCACGGACATGCCGCGGGTCTACATAGGACGCCTGAGCTACAACGTC
      |||||||||||||||||||||||||||||||||||||||||||||||||||||||||||||||
WT   GGTCCCCGCCGCCACGGACATGCCGCGG TCTACATAGGACGCCTGAGCTACAACGTC
  
```

Sanger Sequencing - Human SRSF6 knockout
HEK293T cell line (ab266529)

Homozygous: 1 bp insertion in exon 1



Please note: All products are "FOR RESEARCH USE ONLY. NOT FOR USE IN DIAGNOSTIC PROCEDURES"

Our Abpromise to you: Quality guaranteed and expert technical support

- Replacement or refund for products not performing as stated on the datasheet
- Valid for 12 months from date of delivery
- Response to your inquiry within 24 hours
- We provide support in Chinese, English, French, German, Japanese and Spanish
- Extensive multi-media technical resources to help you
- We investigate all quality concerns to ensure our products perform to the highest standards

If the product does not perform as described on this datasheet, we will offer a refund or replacement. For full details of the Abpromise, please visit <https://www.abcam.com/abpromise> or contact our technical team.

Terms and conditions

- Guarantee only valid for products bought direct from Abcam or one of our authorized distributors