

## Product datasheet

# Axl overexpression 293T lysate (whole cell) ab94145

[2 Images](#)

### Overview

<b>Product name</b>	Axl overexpression 293T lysate (whole cell)
<b>General notes</b>	ab94145 is a 293T cell transfected lysate in which Human Axl has been transiently over-expressed using a pCMV-Axl plasmid. The lysate is provided in 1 x Sample Buffer.
<b>Tested applications</b>	<b>Suitable for:</b> WB

### Properties

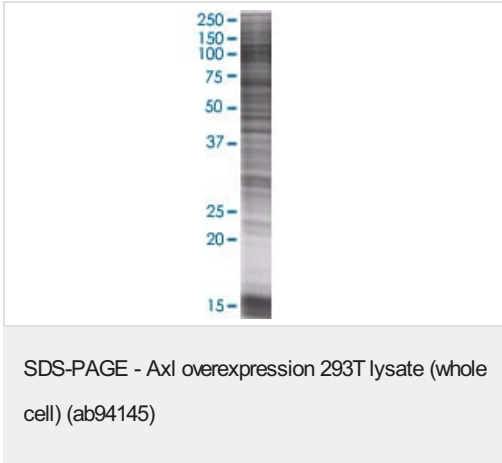
<b>Mycoplasma free</b>	Yes
<b>Form</b>	Liquid
<b>Storage instructions</b>	Shipped on dry ice. Upon delivery aliquot and store at -20°C. Avoid freeze / thaw cycles.
<b>Storage buffer</b>	Constituents: 0.01% Bromophenol blue, 2.3% Beta mercaptoethanol, 2% Sodium lauryl sulfate, 0.788% Tris HCl, 10% Glycerol (glycerin, glycerine)
<b>Background</b>	Function: May function as a signal transducer between specific cell types of mesodermal origin. In case of filovirus infection, seems to function as a cell entry factor. Tissue specificity: Highly expressed in metastatic colon tumors. Expressed in primary colon tumors. Weakly expressed in normal colon tissue. Similarity: Belongs to the protein kinase superfamily. Tyr protein kinase family. AXL/UFO subfamily. Contains 2 fibronectin type-III domains. Contains 2 Ig-like C2-type (immunoglobulin-like) domains. Contains 1 protein kinase domain.

### Applications

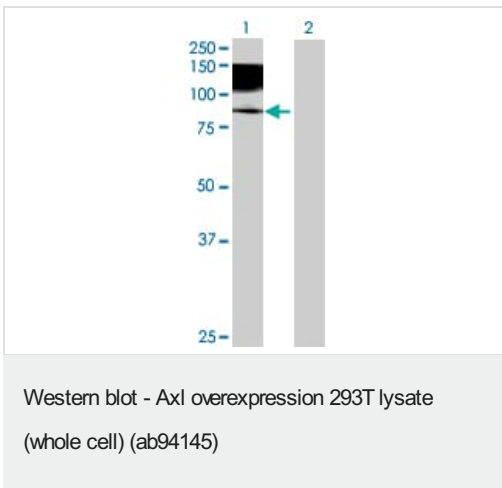
**The Abpromise guarantee** Our **Abpromise guarantee** covers the use of ab94145 in the following tested applications. The application notes include recommended starting dilutions; optimal dilutions/concentrations should be determined by the end user.

Application	Abreviews	Notes
WB		Use at an assay dependent dilution.

### Images



ab94145 at 15µg/lane on an SDS-PAGE gel.



**All lanes :** Anti-Axl antibody (**ab54803**) at 1/500 dilution

**Lane 1 :** Axl overexpression 293T lysate (whole cell) (ab94145)

**Lane 2 :** 293T non-transfected lysate

Lysates/proteins at 25 µg per lane.

**Secondary**

**All lanes :** Goat Anti-mouse IgG (H and L) HRP conjugated at 1/2500 dilution

**Please note:** All products are "FOR RESEARCH USE ONLY. NOT FOR USE IN DIAGNOSTIC PROCEDURES"

**Our Abpromise to you: Quality guaranteed and expert technical support**

- Replacement or refund for products not performing as stated on the datasheet
- Valid for 12 months from date of delivery
- Response to your inquiry within 24 hours
- We provide support in Chinese, English, French, German, Japanese and Spanish
- Extensive multi-media technical resources to help you
- We investigate all quality concerns to ensure our products perform to the highest standards

If the product does not perform as described on this datasheet, we will offer a refund or replacement. For full details of the Abpromise, please visit <https://www.abcam.com/abpromise> or contact our technical team.

**Terms and conditions**

- Guarantee only valid for products bought direct from Abcam or one of our authorized distributors