

## Product datasheet

# CHRAC-17 overexpression 293T lysate (whole cell) ab94037

[2 Images](#)

### Overview

<b>Product name</b>	CHRAC-17 overexpression 293T lysate (whole cell)
<b>General notes</b>	ab94037 is a 293T cell transfected lysate in which human CHRAC-17 has been transiently overexpressed using a pCMV-CHRAC-17 plasmid. The lysate is provided in 1X Sample Buffer.  Protein previously known as DNA Polymerase epsilon.
<b>Tested applications</b>	<b>Suitable for:</b> WB

### Properties

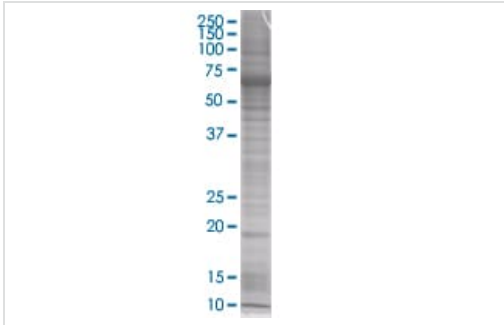
<b>Mycoplasma free</b>	Yes
<b>Form</b>	Liquid
<b>Storage instructions</b>	Shipped on dry ice. Upon delivery aliquot and store at -20°C. Avoid freeze / thaw cycles.
<b>Storage buffer</b>	Constituents: 0.01% Bromophenol blue, 2.3% Beta mercaptoethanol, 2% Sodium lauryl sulfate, 0.788% Tris HCl, 10% Glycerol (glycerin, glycerine)
<b>Background</b>	Function: Forms a complex with DNA polymerase epsilon subunit CHRAC1 and binds naked DNA, which is then incorporated into chromatin, aided by the nucleosome-remodeling activity of ISWI/SNF2H and ACF1. Tissue specificity: Expressed in all tissues tested, including, heart, brain, placenta, lung, liver, skeletal muscle, kidney and pancreas.

### Applications

**The Abpromise guarantee** Our **Abpromise guarantee** covers the use of ab94037 in the following tested applications. The application notes include recommended starting dilutions; optimal dilutions/concentrations should be determined by the end user.

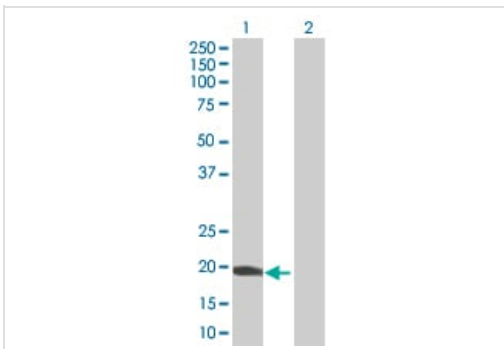
Application	Abreviews	Notes
WB		Use at an assay dependent dilution.

### Images



SDS-PAGE - CHRAC-17 overexpression 293T lysate  
(whole cell) (ab94037)

ab94037 at 15 µg/lane on an SDS-PAGE gel.



Western blot - CHRAC-17 overexpression 293T  
lysate (whole cell) (ab94037)

**All lanes** : Anti-CHRAC-17 antibody (**ab88521**) at 1/500 dilution

**Lane 1** : CHRAC-17 overexpression 293T lysate (whole cell)  
(ab94037)

**Lane 2** : 293T non-transfected Lysate

Lysates/proteins at 25 µg per lane.

#### Secondary

**All lanes** : Goat Anti-mouse IgG (H and L) HRP conjugated at  
1/2500 dilution

**Please note:** All products are "FOR RESEARCH USE ONLY. NOT FOR USE IN DIAGNOSTIC PROCEDURES"

### Our Abpromise to you: Quality guaranteed and expert technical support

- Replacement or refund for products not performing as stated on the datasheet
- Valid for 12 months from date of delivery
- Response to your inquiry within 24 hours
- We provide support in Chinese, English, French, German, Japanese and Spanish
- Extensive multi-media technical resources to help you
- We investigate all quality concerns to ensure our products perform to the highest standards

If the product does not perform as described on this datasheet, we will offer a refund or replacement. For full details of the Abpromise, please visit <https://www.abcam.com/abpromise> or contact our technical team.

### Terms and conditions

- Guarantee only valid for products bought direct from Abcam or one of our authorized distributors