

Product datasheet

Cyclin D2 overexpression 293T lysate (whole cell) ab94090

[2 Images](#)

Overview

| | |
|----------------------------|---|
| Product name | Cyclin D2 overexpression 293T lysate (whole cell) |
| General notes | ab94090 is a 293T cell transfected lysate in which Human Cyclin D2 has been transiently overexpressed using a pCMV-Cyclin D2 plasmid. The lysate is provided in 1X Sample Buffer. |
| Tested applications | Suitable for: WB |

Properties

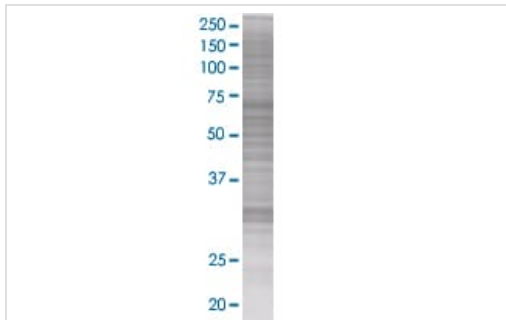
| | |
|-----------------------------|---|
| Mycoplasma free | Yes |
| Form | Liquid |
| Storage instructions | Shipped on dry ice. Upon delivery aliquot and store at -20°C. Avoid freeze / thaw cycles. |
| Storage buffer | Constituents: 0.01% Bromophenol blue, 2.3% Beta mercaptoethanol, 2% Sodium lauryl sulfate, 0.788% Tris HCl, 10% Glycerol (glycerin, glycerine) |
| Background | Function: Regulatory component of the cyclin D2-CDK4 (DC) complex that phosphorylates and inhibits members of the retinoblastoma (RB) protein family including RB1 and regulates the cell-cycle during G(1)/S transition. Phosphorylation of RB1 allows dissociation of the transcription factor E2F from the RB/E2F complex and the subsequent transcription of E2F target genes which are responsible for the progression through the G(1) phase. Hypophosphorylates RB1 in early G(1) phase. Cyclin D-CDK4 complexes are major integrators of various mitogenic and antimitogenic signals. Also substrate for SMAD3, phosphorylating SMAD3 in a cell-cycle-dependent manner and repressing its transcriptional activity. Component of the ternary complex, cyclin D2/CDK4/CDKN1B, required for nuclear translocation and activity of the cyclin D-CDK4 complex. Similarity: Belongs to the cyclin family. Cyclin D subfamily. Contains 1 cyclin N-terminal domain. |

Applications

The Abpromise guarantee Our **Abpromise guarantee** covers the use of ab94090 in the following tested applications. The application notes include recommended starting dilutions; optimal dilutions/concentrations should be determined by the end user.

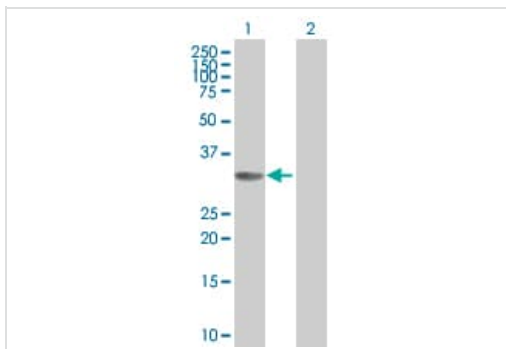
| Application | Abreviews | Notes |
|-------------|-----------|-------------------------------------|
| WB | | Use at an assay dependent dilution. |

Images



SDS-PAGE - Cyclin D2 overexpression 293T lysate
(whole cell) (ab94090)

ab94090 at 15µg/lane on an SDS-PAGE gel.



Western blot - Cyclin D2 overexpression 293T lysate
(whole cell) (ab94090)

All lanes : Anti-Cyclin D2 antibody (**ab89595**) at 1/500 dilution

Lane 1 : Cyclin D2 overexpression 293T lysate (whole cell)
(ab94090)

Lane 2 : 293T non-transfected lysate

Lysates/proteins at 25 µg per lane.

Secondary

All lanes : Goat Anti-mouse IgG (H and L) HRP conjugated at
1/2500 dilution

Please note: All products are "FOR RESEARCH USE ONLY. NOT FOR USE IN DIAGNOSTIC PROCEDURES"

Our Abpromise to you: Quality guaranteed and expert technical support

- Replacement or refund for products not performing as stated on the datasheet
- Valid for 12 months from date of delivery
- Response to your inquiry within 24 hours
- We provide support in Chinese, English, French, German, Japanese and Spanish
- Extensive multi-media technical resources to help you
- We investigate all quality concerns to ensure our products perform to the highest standards

If the product does not perform as described on this datasheet, we will offer a refund or replacement. For full details of the Abpromise, please visit <https://www.abcam.com/abpromise> or contact our technical team.

Terms and conditions

- Guarantee only valid for products bought direct from Abcam or one of our authorized distributors