

Product datasheet

EDG2 / LPA-1 overexpression 293T lysate (whole cell) ab94195

[2 Images](#)

Overview

| | |
|----------------------------|--|
| Product name | EDG2 / LPA-1 overexpression 293T lysate (whole cell) |
| General notes | ab94195 is a 293T cell transfected lysate in which Human EDG2 / LPA-1 has been transiently over-expressed using a pCMV-EDG2 / LPA-1 plasmid. The lysate is provided in 1X Sample Buffer. |
| Tested applications | Suitable for: WB |

Properties

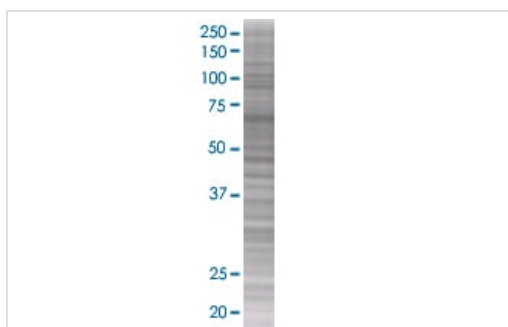
| | |
|-----------------------------|--|
| Mycoplasma free | Yes |
| Form | Liquid |
| Storage instructions | Shipped on dry ice. Upon delivery aliquot and store at -20°C. Avoid freeze / thaw cycles. |
| Storage buffer | Constituents: 0.01% Bromophenol blue, 2.3% Beta mercaptoethanol, 2% Sodium lauryl sulfate, 0.788% Tris HCl, 10% Glycerol (glycerin, glycerine) |
| Background | Function: Receptor for lysophosphatidic acid (LPA), a mediator of diverse cellular activities. Seems to be coupled to the G(i)/G(o), G(12)/G(13), and G(q) families of heteromeric G proteins. Stimulates phospholipase C (PLC) activity in a manner that is dependent on RALA activation. Tissue specificity: Expressed in many adult organs, including brain, heart, colon, small intestine, placenta, prostate, ovary, pancreas, testes, spleen, skeletal muscle, and kidney. Little or no expression in liver, lung, thymus, or peripheral blood leukocytes. Similarity: Belongs to the G-protein coupled receptor 1 family. |

Applications

The Abpromise guarantee Our **Abpromise guarantee** covers the use of ab94195 in the following tested applications. The application notes include recommended starting dilutions; optimal dilutions/concentrations should be determined by the end user.

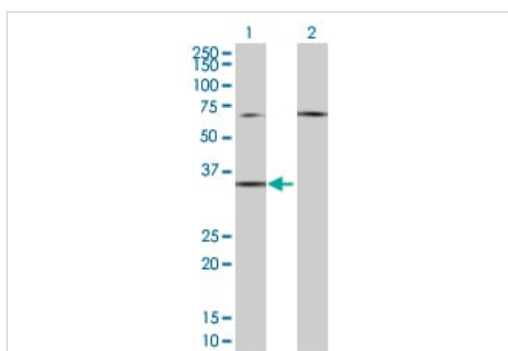
| Application | Abreviews | Notes |
|-------------|-----------|-------------------------------------|
| WB | | Use at an assay dependent dilution. |

Images



SDS-PAGE - EDG2 / LPA-1 overexpression 293T lysate (whole cell) (ab94195)

ab94195 at 15µg/lane on an SDS-PAGE gel



Western blot - EDG2 / LPA-1 overexpression 293T lysate (whole cell) (ab94195)

All lanes : Anti-EDG2 /LPA-1 antibody (**ab89628**) at 1/500 dilution

Lane 1 : EDG2 / LPA-1 overexpression 293T lysate (whole cell) (ab94195)

Lane 2 : 293T non-transfected lysate

Lysates/proteins at 25 µg per lane.

Secondary

All lanes : Goat Anti-mouse IgG (H and L) HRP conjugated at 1/2500 dilution

Please note: All products are "FOR RESEARCH USE ONLY. NOT FOR USE IN DIAGNOSTIC PROCEDURES"

Our Abpromise to you: Quality guaranteed and expert technical support

- Replacement or refund for products not performing as stated on the datasheet
- Valid for 12 months from date of delivery
- Response to your inquiry within 24 hours
- We provide support in Chinese, English, French, German, Japanese and Spanish
- Extensive multi-media technical resources to help you
- We investigate all quality concerns to ensure our products perform to the highest standards

If the product does not perform as described on this datasheet, we will offer a refund or replacement. For full details of the Abpromise, please visit <https://www.abcam.com/abpromise> or contact our technical team.

Terms and conditions

- Guarantee only valid for products bought direct from Abcam or one of our authorized distributors