

Product datasheet

HeLa whole cell lysate ab150035

5 Images

Overview

Product name	HeLa whole cell lysate
General notes	We recommend aliquoting the extracts into single use fractions and then storing them at -80°C. This HeLa whole cell was prepared using a standard whole cell lysate protocol. The concentration was determined using the BCA assay process and then diluted using Dithiothreitol (DTT).
Tested applications	Suitable for: WB

Properties

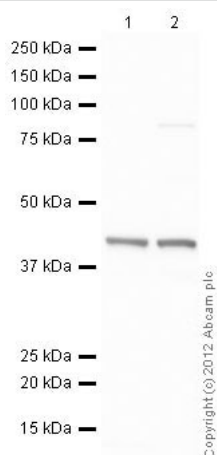
Mycoplasma free	Yes
Form	Liquid
Storage instructions	Shipped on Dry Ice. Upon delivery aliquot. Store at -20°C or -80°C. Avoid freeze / thaw cycle.
Storage buffer	pH: 7.50 Constituent: 10% (R*,R*)-1,4-Dimercaptobutan-2,3-diol
Lysate notes	This HeLa whole cell was prepared using a standard whole cell lysate protocol.

Applications

The **Abpromise guarantee** Our **Abpromise guarantee** covers the use of ab150035 in the following tested applications. The application notes include recommended starting dilutions; optimal dilutions/concentrations should be determined by the end user.

Application	Abreviews	Notes
WB		Use at an assay dependent concentration.

Images



Western blot - HeLa whole cell lysate (ab150035)

All lanes : Anti-Actin antibody - Loading Control (**ab1801**) at 1 μ g/ml

Lane 1 : HeLa whole cell lysate (ab150035)

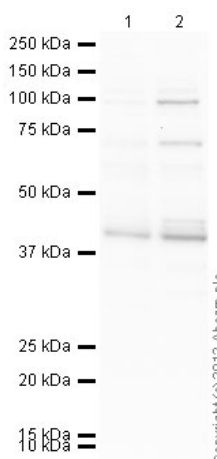
Lane 2 : HeLa nuclear extract lysate (**ab150036**)

Lysates/proteins at 10 μ g per lane.

Secondary

All lanes : Goat Anti-Rabbit IgG H&L (HRP) preadsorbed (**ab97080**) at 1/5000 dilution

Observed band size: 42 kDa



Western blot - HeLa whole cell lysate (ab150035)

All lanes : Anti-TATA binding protein TBP antibody - Nuclear Loading Control and ChIP Grade (**ab63766**) at 1 μ g/ml

Lane 1 : HeLa whole cell lysate (ab150035)

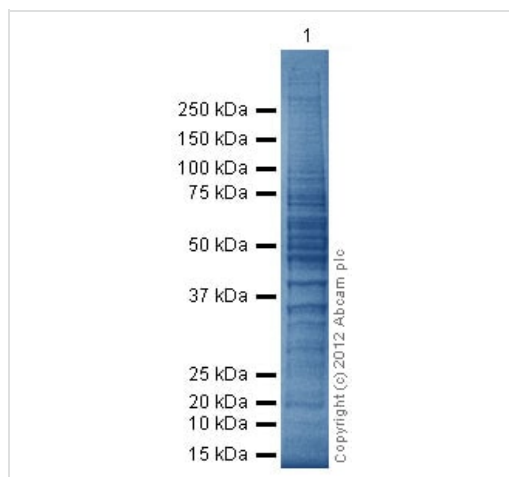
Lane 2 : HeLa nuclear extract lysate (**ab150036**)

Lysates/proteins at 10 μ g per lane.

Secondary

All lanes : Goat Anti-Mouse IgG H&L (HRP) preadsorbed (**ab97040**) at 1/5000 dilution

Observed band size: 45 kDa



SDS-PAGE - HeLa whole cell lysate (ab150035)

All lanes stained with Optiblot Blue ([ab119211](#)) (20 ml)

Lane 1 : HeLa (Human epithelial carcinoma cell line) Whole Cell Lysate (ab150035)

Lysates/proteins at 10 µg per lane.



Western blot - HeLa whole cell lysate (ab150035)

All lanes : Anti-beta Tubulin antibody ([ab21057](#)) at 1 µg/ml

Lane 1 : HeLa whole cell lysate (ab150035)

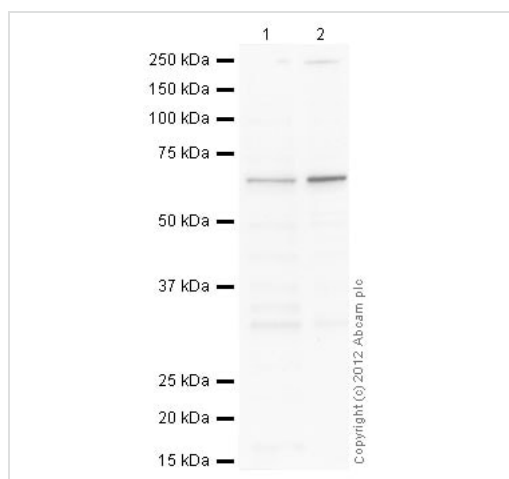
Lane 2 : HeLa nuclear extract lysate ([ab150036](#))

Lysates/proteins at 20 µg per lane.

Secondary

All lanes : Rabbit polyclonal to Goat IgG - H&L - Pre-Adsorbed (HRP) ([ab65486](#)) at 1/3000 dilution

Observed band size: 51 kDa



Western blot - HeLa whole cell lysate (ab150035)

All lanes : Anti-HDAC1 antibody ([ab19845](#)) at 1 µg/ml

Lane 1 : HeLa whole cell lysate (ab150035)

Lane 2 : HeLa nuclear extract lysate ([ab150036](#))

Lysates/proteins at 10 µg per lane.

Secondary

All lanes : Goat Anti-Rabbit IgG H&L (HRP) preadsorbed ([ab97080](#)) at 1/5000 dilution

Observed band size: 60 kDa

Please note: All products are "FOR RESEARCH USE ONLY. NOT FOR USE IN DIAGNOSTIC PROCEDURES"

Our Abpromise to you: Quality guaranteed and expert technical support

- Replacement or refund for products not performing as stated on the datasheet
- Valid for 12 months from date of delivery
- Response to your inquiry within 24 hours

- We provide support in Chinese, English, French, German, Japanese and Spanish
- Extensive multi-media technical resources to help you
- We investigate all quality concerns to ensure our products perform to the highest standards

If the product does not perform as described on this datasheet, we will offer a refund or replacement. For full details of the Abpromise, please visit <https://www.abcam.com/abpromise> or contact our technical team.

Terms and conditions

- Guarantee only valid for products bought direct from Abcam or one of our authorized distributors