

## Product datasheet

# HIP1R overexpression 293T lysate (whole cell) ab94268

2 Images

### Overview

<b>Product name</b>	HIP1R overexpression 293T lysate (whole cell)
<b>General notes</b>	ab94268 is a 293T cell transfected lysate in which Human HIP1R has been transiently over-expressed using a pCMV-HIP1R plasmid. The lysate is provided in 1X Sample Buffer.
<b>Tested applications</b>	<b>Suitable for:</b> WB

### Properties

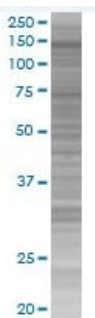
<b>Mycoplasma free</b>	Yes
<b>Form</b>	Liquid
<b>Storage instructions</b>	Shipped on dry ice. Upon delivery aliquot and store at -20°C. Avoid freeze / thaw cycles.
<b>Storage buffer</b>	Constituents: 0.01% Bromophenol blue, 2.3% Beta mercaptoethanol, 2% Sodium lauryl sulfate, 0.788% Tris HCl, 10% Glycerol (glycerin, glycerine)
<b>Background</b>	Function: Component of clathrin-coated pits and vesicles, that may link the endocytic machinery to the actin cytoskeleton. Binds 3-phosphoinositides (via ENTH domain). May act through the ENTH domain to promote cell survival by stabilizing receptor tyrosine kinases following ligand-induced endocytosis. Tissue specificity: Brain, heart, kidney, pancreas, and liver, but not in lung or placenta. Similarity: Belongs to the SLA2 family. Contains 1 ENTH (epsin N-terminal homology) domain. Contains 1 ILWEQ domain. Domain: Binds F-actin via the talin-like ILWEQ domain.

### Applications

**The Abpromise guarantee** Our **Abpromise guarantee** covers the use of ab94268 in the following tested applications. The application notes include recommended starting dilutions; optimal dilutions/concentrations should be determined by the end user.

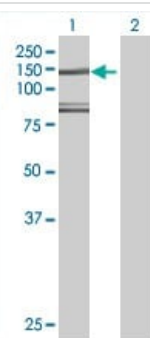
Application	Abreviews	Notes
WB		Use at an assay dependent dilution.

### Images



SDS-PAGE - HIP1R overexpression 293T lysate  
(whole cell) (ab94268)

ab94268 at 15µg/lane on an SDS-PAGE gel.



Western blot - HIP1R overexpression 293T lysate  
(whole cell) (ab94268)

**All lanes :** Anti-HIP1R antibody (**ab88468**) at 1/500 dilution

**Lane 1 :** HIP1R overexpression 293T lysate (whole cell) (ab94268)

**Lane 2 :** non-transfected 293T cell lysate

Lysates/proteins at 25 µg per lane.

#### Secondary

**All lanes :** Goat Anti-mouse IgG (H and L) HRP conjugated at 1/2500 dilution

**Please note:** All products are "FOR RESEARCH USE ONLY. NOT FOR USE IN DIAGNOSTIC PROCEDURES"

### Our Abpromise to you: Quality guaranteed and expert technical support

- Replacement or refund for products not performing as stated on the datasheet
- Valid for 12 months from date of delivery
- Response to your inquiry within 24 hours
- We provide support in Chinese, English, French, German, Japanese and Spanish
- Extensive multi-media technical resources to help you
- We investigate all quality concerns to ensure our products perform to the highest standards

If the product does not perform as described on this datasheet, we will offer a refund or replacement. For full details of the Abpromise, please visit <https://www.abcam.com/abpromise> or contact our technical team.

### Terms and conditions

- Guarantee only valid for products bought direct from Abcam or one of our authorized distributors