

## Product datasheet

# Human CD27A knockout Raji cell lysate ab281360

3 Images

### Overview

---

<b>Product name</b>	Human CD27A knockout Raji cell lysate
<b>Product overview</b>	Knockout cell lysate achieved by CRISPR/Cas9.
<b>Parental Cell Line</b>	Raji
<b>Organism</b>	Human
<b>Mutation description</b>	Knockout achieved by CRISPR/Cas9; X = 10 bp deletion; Frameshift: 100%
<b>Passage number</b>	<20
<b>Knockout validation</b>	Next Generation Sequencing (NGS), Western Blot (WB)
<b>Reconstitution notes</b>	To use as WB control, resuspend the lyophilizate in 50 µL of LDS* Sample Buffer to have a final concentration of 2 mg/ml. For reducing conditions, we recommend a final concentration of 0.1 M DTT. <i>*Usage of SDS sample buffer is not recommended with these lyophilized lysates.</i>

**Notes**

**Lysate preparation:** Our lysates are made using RIPA buffer to which we add a protease inhibitor cocktail and phosphatase inhibitor cocktail (ratio: 300:100:10). *This means that the protein of interest is denatured.* If you require a native form of the protein please use the live cell version - found [here](#). Please refer to our lysis protocol for further details on how our lysates are prepared.

**User storage instructions:** Lyophilizate may be stored at 4°C. After reconstitution, store at -20°C for short-term storage or -80°C for long-term storage.

Access thousands of knockout cell lysates, generated from commonly used cancer cell lines.

**[See here for more information on knockout cell lysates.](#)**

Abcam has not and does not intend to apply for the REACH Authorisation of customers' uses of products that contain European Authorisation list (Annex XIV) substances.

It is the responsibility of our customers to check the necessity of application of REACH Authorisation, and any other relevant authorisations, for their intended uses.

This product is subject to limited use licenses from The Broad Institute and ERS Genomics Limited, and is developed with patented technology. For full details of the limited use licenses and relevant patents please refer to our [limited use license](#) and [patent pages](#).

**Tested applications**                      **Suitable for:** WB

## Properties

**Storage instructions** Store at -80°C. Please refer to protocols.

Components	1 kit
ab281412 - Human CD27A knockout Raji cell lysate	1 x 100µg
ab269600 - Human wild-type Raji cell lysate	1 x 100µg

**Cell type** Burkitt's lymphoma

**Disease** Lymphoma

**Gender** Male

## Target

**Function** Receptor for CD70/CD27L. May play a role in survival of activated T-cells. May play a role in apoptosis through association with SIVA1.

**Tissue specificity** Found in most T-lymphocytes.

**Sequence similarities** Contains 3 TNFR-Cys repeats.

**Post-translational modifications** Phosphorylated and O-glycosylated.

**Cellular localization** Membrane.

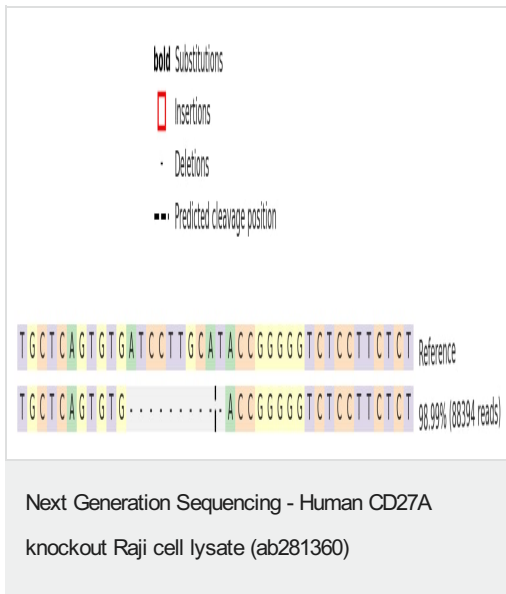
## Applications

**The Abpromise guarantee** Our **Abpromise guarantee** covers the use of ab281360 in the following tested applications.

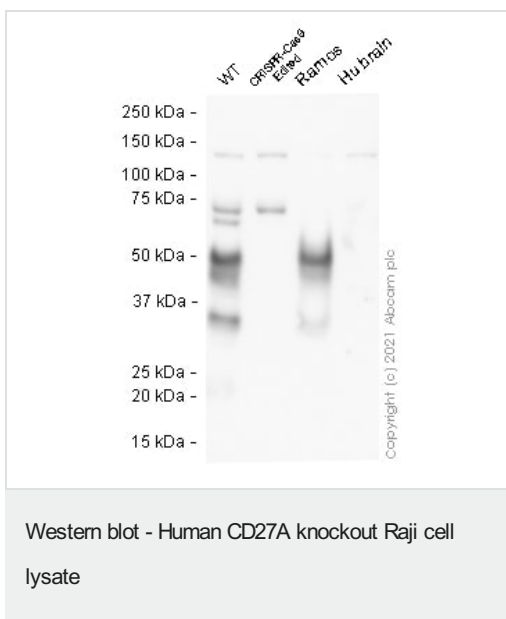
The application notes include recommended starting dilutions; optimal dilutions/concentrations should be determined by the end user.

Application	Abreviews	Notes
WB		Use at an assay dependent concentration.

## Images

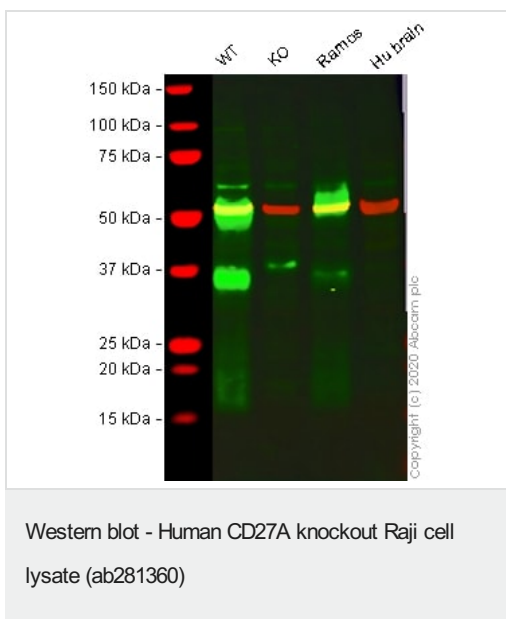


Knockout achieved by CRISPR/Cas9; X = 10 bp deletion;  
Frameshift: 100%



**Lane 1:** Wild-type Raji cell lysate (20 ug)  
**Lane 2:** CD27A knockout Raji cell lysate (20 ug)  
**Lane 3:** Ramos cell lysate (20 ug)  
**Lane 4:** Human brain cell lysate (20 ug)

**ab133761** was shown to react with CD27 in wild-type Raji cells in western blot. Loss of signal was observed when CD27 knockout cell line **ab274910** (knockout cell lysate ab281360) was used. Membranes were blocked in 3 % milk in TBS-T (0.1 % Tween®) before incubation with **ab133761** overnight at 4 °C at a 1 in 1000 dilution. Blots were incubated with HRP conjugated Goat anti-Rabbit (H+L) secondary antibody at 1 in 5000 for 1 hour at room temperature before development with Optiblot ECL reagent (**ab133456**) and imaging.



**Lane 1:** Wild-type Raji (Human Burkitt's lymphoma cell line) whole cell lysate 20 ug  
**Lane 2:** CD27 knockout Raji (Human Burkitt's lymphoma cell line) whole cell lysate 20 ug  
**Lane 3:** Ramos (Human Burkitt's lymphoma cell line) whole cell lysate 20 ug  
**Lane 4:** Human brain tissue lysate 20 ug

**Lanes 1 - 4:** Merged signal (red and green). Green - **ab131254** observed at 35 kDa. Red - loading control **ab7291** (Mouse anti-Alpha Tubulin [DM1A]) observed at 55kDa.

**ab131254** was shown to react with CD27 in wild-type Raji cells in western blot with loss of signal observed in CD27 knockout cell line **ab274910** (knockout cell lysate ab281360). Wild-type and CD27 knockout Raji cell lysates were subjected to SDS-PAGE. Membranes were blocked in 3% milk in TBS-T (0.1% Tween<sup>®</sup>) before incubation with **ab131254** and **ab7291** (Mouse anti-Alpha Tubulin [DM1A]) overnight at 4°C at a 1 in 1000 dilution and a 1 in 20000 dilution respectively. Blots were incubated with Goat anti-Rabbit IgG H&L (IRDye<sup>®</sup> 800CW) preabsorbed (**ab216773**) and Goat anti-Mouse IgG H&L (IRDye<sup>®</sup> 680RD) preabsorbed (**ab216776**) secondary antibodies at 1 in 20000 dilution for 1 hour at room temperature before imaging.

**Please note:** All products are "FOR RESEARCH USE ONLY. NOT FOR USE IN DIAGNOSTIC PROCEDURES"

### **Our Abpromise to you: Quality guaranteed and expert technical support**

---

- Replacement or refund for products not performing as stated on the datasheet
- Valid for 12 months from date of delivery
- Response to your inquiry within 24 hours
  
- We provide support in Chinese, English, French, German, Japanese and Spanish
- Extensive multi-media technical resources to help you
- We investigate all quality concerns to ensure our products perform to the highest standards

If the product does not perform as described on this datasheet, we will offer a refund or replacement. For full details of the Abpromise, please visit <https://www.abcam.com/abpromise> or contact our technical team.

### **Terms and conditions**

---

- Guarantee only valid for products bought direct from Abcam or one of our authorized distributors