

## Product datasheet

# Human NRG2 knockout HeLa cell lysate ab263284

1 Image

### Overview

---

<b>Product name</b>	Human NRG2 knockout HeLa cell lysate
<b>Product overview</b>	Knockout cell lysate achieved by CRISPR/Cas9.
<b>Parental Cell Line</b>	HeLa
<b>Organism</b>	Human
<b>Mutation description</b>	Knockout achieved by using CRISPR/Cas9, 1 bp insertion in exon5.
<b>Passage number</b>	<20
<b>Knockout validation</b>	Sanger Sequencing
<b>Reconstitution notes</b>	To use as WB control, resuspend the lyophilizate in 50 µL of LDS* Sample Buffer to have a final concentration of 2 mg/ml. For reducing conditions, we recommend a final concentration of 0.1 M DTT.

*\*Usage of SDS sample buffer is not recommended with these lyophilized lysates.*

**Notes**

**Lysate preparation:** Our lysates are made using RIPA buffer to which we add a protease inhibitor cocktail and phosphatase inhibitor cocktail (ratio: 300:100:10). *This means that the protein of interest is denatured.* If you require a native form of the protein please use the live cell version - found [here](#). Please refer to our lysis protocol for further details on how our lysates are prepared.

**User storage instructions:** Lyophilizate may be stored at 4°C. After reconstitution, store at -20°C for short-term storage or -80°C for long-term storage.

Access thousands of knockout cell lysates, generated from commonly used cancer cell lines.

**[See here for more information on knockout cell lysates.](#)**

Abcam has not and does not intend to apply for the REACH Authorisation of customers' uses of products that contain European Authorisation list (Annex XIV) substances.

It is the responsibility of our customers to check the necessity of application of REACH Authorisation, and any other relevant authorisations, for their intended uses.

This product is subject to limited use licenses from The Broad Institute, ERS Genomics Limited and Sigma-Aldrich Co. LLC, and is developed with patented technology. For full details of the licenses and patents please refer to our [limited use license](#) and [patent pages](#).

### Properties

**Storage instructions** Store at -80°C. Please refer to protocols.

Components	1 kit
ab262750 - Human NRG2 knockout HeLa cell lysate	1 x 100µg
ab255929 - Human wild-type HeLa cell lysate	1 x 100µg

**Cell type** epithelial  
**Disease** Adenocarcinoma  
**Gender** Female  
**STR Analysis** Amelogenin X D5S818: 11, 12 D13S317: 12, 13.3 D7S820: 8, 12 D16S539: 9, 10 vWA: 16, 18 TH01: 7 TPOX: 8,12 CSF1PO: 9, 10

## Target

**Function** Direct ligand for ERBB3 and ERBB4 tyrosine kinase receptors. Concomitantly recruits ERBB1 and ERBB2 coreceptors, resulting in ligand-stimulated tyrosine phosphorylation and activation of the ERBB receptors. May also promote the heterodimerization with the EGF receptor.

**Tissue specificity** Restricted to the cerebellum in the adult.

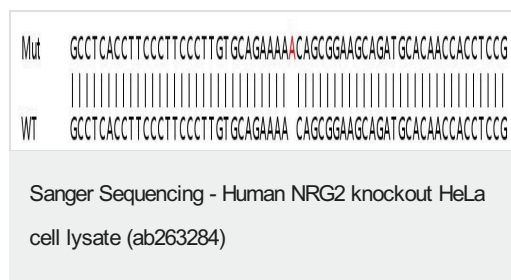
**Sequence similarities** Belongs to the neuregulin family.  
Contains 1 EGF-like domain.  
Contains 1 Ig-like C2-type (immunoglobulin-like) domain.

**Domain** The cytoplasmic domain may be involved in the regulation of trafficking and proteolytic processing. Regulation of the proteolytic processing involves initial intracellular domain dimerization.  
ERBB receptor binding is elicited entirely by the EGF-like domain.

**Post-translational modifications** Proteolytic cleavage close to the plasma membrane on the external face leads to the release of the soluble growth factor form.  
Extensive glycosylation precedes the proteolytic cleavage.

**Cellular localization** Secreted and Cell membrane. Does not seem to be active.

## Images



Homozygous: 1 bp insertion in exon5

**Please note:** All products are "FOR RESEARCH USE ONLY. NOT FOR USE IN DIAGNOSTIC PROCEDURES"

## **Our Abpromise to you: Quality guaranteed and expert technical support**

---

- Replacement or refund for products not performing as stated on the datasheet
- Valid for 12 months from date of delivery
- Response to your inquiry within 24 hours
  
- We provide support in Chinese, English, French, German, Japanese and Spanish
- Extensive multi-media technical resources to help you
- We investigate all quality concerns to ensure our products perform to the highest standards

If the product does not perform as described on this datasheet, we will offer a refund or replacement. For full details of the Abpromise, please visit <https://www.abcam.com/abpromise> or contact our technical team.

## **Terms and conditions**

---

- Guarantee only valid for products bought direct from Abcam or one of our authorized distributors