

## Product datasheet

# Human SLC25A20 knockout HeLa cell lysate ab259120

3 Images

### Overview

---

<b>Product name</b>	Human SLC25A20 knockout HeLa cell lysate
<b>Product overview</b>	Knockout cell lysate achieved by CRISPR/Cas9.
<b>Parental Cell Line</b>	HeLa
<b>Organism</b>	Human
<b>Mutation description</b>	Knockout achieved by using CRISPR/Cas9, 10 bp deletion in exon1 and 1 bp insertion in exon1 and Insertion of the selection cassette in exon1.
<b>Passage number</b>	<20
<b>Knockout validation</b>	Sanger Sequencing
<b>Reconstitution notes</b>	To use as WB control, resuspend the lyophilizate in 50 µL of LDS* Sample Buffer to have a final concentration of 2 mg/ml. For reducing conditions, we recommend a final concentration of 0.1 M DTT. <i>*Usage of SDS sample buffer is not recommended with these lyophilized lysates.</i>

**Notes**

**Lysate preparation:** Our lysates are made using RIPA buffer to which we add a protease inhibitor cocktail and phosphatase inhibitor cocktail (ratio: 300:100:10). *This means that the protein of interest is denatured.* If you require a native form of the protein please use the live cell version - found [here](#). Please refer to our lysis protocol for further details on how our lysates are prepared.

**User storage instructions:** Lyophilizate may be stored at 4°C. After reconstitution, store at -20°C for short-term storage or -80°C for long-term storage.

Access thousands of knockout cell lysates, generated from commonly used cancer cell lines.

**[See here for more information on knockout cell lysates.](#)**

Abcam has not and does not intend to apply for the REACH Authorisation of customers' uses of products that contain European Authorisation list (Annex XIV) substances.

It is the responsibility of our customers to check the necessity of application of REACH Authorisation, and any other relevant authorisations, for their intended uses.

This product is subject to limited use licenses from The Broad Institute, ERS Genomics Limited and Sigma-Aldrich Co. LLC, and is developed with patented technology. For full details of the licenses and patents please refer to our [limited use license](#) and [patent pages](#).

## Properties

**Storage instructions** Store at -80°C. Please refer to protocols.

Components	1 kit
ab261462 - Human SLC25A20 knockout HeLa cell lysate	1 x 100µg
ab255929 - Human wild-type HeLa cell lysate	1 x 100µg

**Cell type** epithelial

**Disease** Adenocarcinoma

**Gender** Female

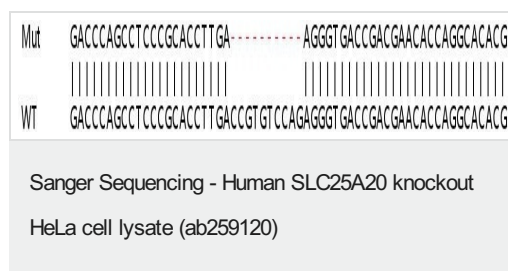
**STR Analysis** Amelogenin X D5S818: 11, 12 D13S317: 12, 13.3 D7S820: 8, 12 D16S539: 9, 10 vWA: 16, 18 TH01: 7 TPOX: 8,12 CSF1PO: 9, 10

## Target

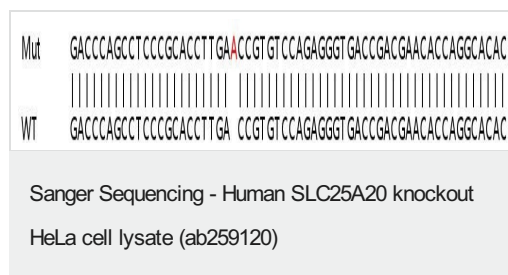
**Relevance** SLC25A20 is one of several closely related mitochondrial membrane carrier proteins that shuttle substrates between cytosol and the intramitochondrial matrix space. It mediates the transport of acylcarnitines into the mitochondrial matrix for their oxidation by the mitochondrial fatty acid oxidation pathway. Mutations in this gene are associated with carnitine acylcarnitine translocase deficiency, which can cause a variety of pathological conditions such as hypoglycemia, cardiac arrest, hepatomegaly, hepatic dysfunction and muscle weakness, and is usually lethal in new born and infants.

**Cellular localization** Mitochondrion inner membrane; Multipass membrane protein.

## Images



Allele-1: 10 bp deletion in exon1



Allele-2: 1 bp insertion in exon1

Mut	CCCGCACCTTGACCGTGTCC*****Insertion*****	AGAGGGTGACCGACGAACAC
WT	CCCGCACCTTGACCGTGTCC	AGAGGGTGACCGACGAACAC

Allele-3: Insertion of the selection cassette in exon1

Sanger Sequencing - Human SLC25A20 knockout  
 HeLa cell lysate (ab259120)

**Please note:** All products are "FOR RESEARCH USE ONLY. NOT FOR USE IN DIAGNOSTIC PROCEDURES"

**Our Abpromise to you: Quality guaranteed and expert technical support**

- Replacement or refund for products not performing as stated on the datasheet
- Valid for 12 months from date of delivery
- Response to your inquiry within 24 hours
- We provide support in Chinese, English, French, German, Japanese and Spanish
- Extensive multi-media technical resources to help you
- We investigate all quality concerns to ensure our products perform to the highest standards

If the product does not perform as described on this datasheet, we will offer a refund or replacement. For full details of the Abpromise, please visit <https://www.abcam.com/abpromise> or contact our technical team.

**Terms and conditions**

- Guarantee only valid for products bought direct from Abcam or one of our authorized distributors