

## Product datasheet

# MRP6/ARA overexpression 293T lysate (whole cell) ab94266

[2 Images](#)

### Overview

<b>Product name</b>	MRP6/ARA overexpression 293T lysate (whole cell)
<b>General notes</b>	ab94266 is a 293T cell transfected lysate in which Human MRP6 has been transiently over-expressed using a pCMV-MRP6 plasmid. The lysate is provided in 1X Sample Buffer.
<b>Tested applications</b>	<b>Suitable for:</b> WB

### Properties

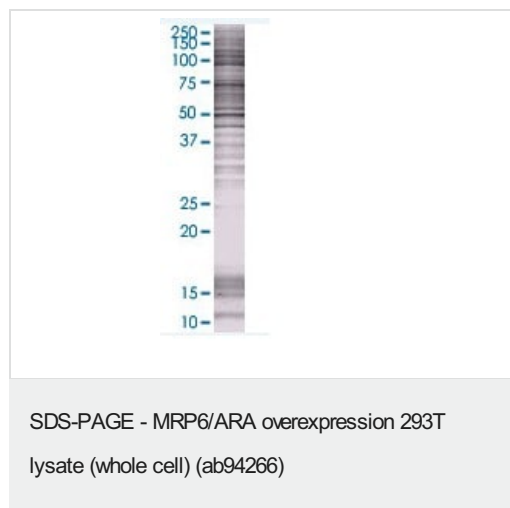
<b>Mycoplasma free</b>	Yes
<b>Form</b>	Liquid
<b>Storage instructions</b>	Shipped on dry ice. Upon delivery aliquot and store at -20°C. Avoid freeze / thaw cycles.
<b>Storage buffer</b>	Constituents: 0.01% Bromophenol blue, 2.3% Beta mercaptoethanol, 2% Sodium lauryl sulfate, 0.788% Tris HCl, 10% Glycerol (glycerin, glycerine)
<b>Background</b>	<p>Disease: Defects in ABCC6 are the cause of pseudoxanthoma elasticum (PXE) [MIM:264800]. PXE is a disorder characterized by calcification of elastic fibers in skin, arteries and retina that results in dermal lesions with associated laxity and loss of elasticity, arterial insufficiency and retinal hemorrhages leading to macular degeneration. PXE is caused in the overwhelming majority of cases by homozygous or compound heterozygous mutations in the ABCC6 gene (autosomal recessive PXE). Individuals carrying heterozygous mutations express limited manifestations of the pseudoxanthoma elasticum phenotype (autosomal dominant PXE).</p> <p>Function: May participate directly in the active transport of drugs into subcellular organelles or influence drug distribution indirectly. Transports glutathione conjugates as leukotriene-c4 (LTC4) and N-ethylmaleimide S-glutathione (NEM-GS). Similarity: Belongs to the ABC transporter superfamily. ABCC family. Conjugate transporter (TC 3.A.1.208) subfamily. Contains 2 ABC transmembrane type-1 domains. Contains 2 ABC transporter domains. Tissue specificity: Expressed in kidney and liver. Very low expression in other tissues.</p>

### Applications

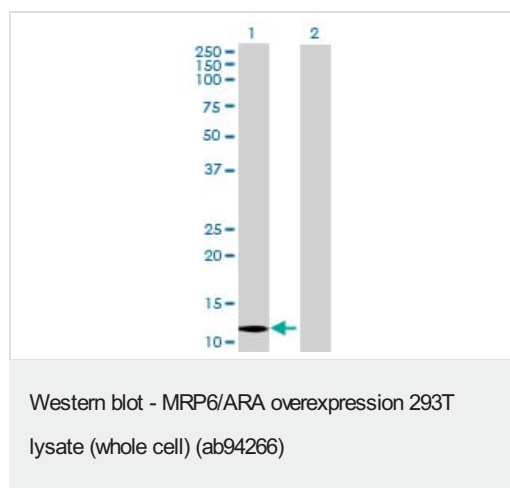
**The Abpromise guarantee** Our **Abpromise guarantee** covers the use of ab94266 in the following tested applications. The application notes include recommended starting dilutions; optimal dilutions/concentrations should be determined by the end user.

Application	Abreviews	Notes
WB		Use at an assay dependent dilution.

## Images



ab94266 at 15µg/lane on an SDS-PAGE gel.



**All lanes** : Anti-MRP6/ARA antibody ([ab54826](#)) at 1/500 dilution

**Lane 1** : MRP6/ARA overexpression 293T lysate (whole cell) (ab94266)

**Lane 2** : 293T Non Transfected Lysate

Lysates/proteins at 25 µg per lane.

### Secondary

**All lanes** : Goat Anti-mouse IgG (H and L) HRP conjugated at 1/2500 dilution

**Please note:** All products are "FOR RESEARCH USE ONLY. NOT FOR USE IN DIAGNOSTIC PROCEDURES"

## Our Abpromise to you: Quality guaranteed and expert technical support

- Replacement or refund for products not performing as stated on the datasheet
- Valid for 12 months from date of delivery
- Response to your inquiry within 24 hours
- We provide support in Chinese, English, French, German, Japanese and Spanish
- Extensive multi-media technical resources to help you
- We investigate all quality concerns to ensure our products perform to the highest standards

If the product does not perform as described on this datasheet, we will offer a refund or replacement. For full details of the Abpromise,

please visit <https://www.abcam.com/abpromise> or contact our technical team.

#### **Terms and conditions**

---

- Guarantee only valid for products bought direct from Abcam or one of our authorized distributors