

Product datasheet

RFX5 overexpression 293T lysate (whole cell) ab94108

[2 Images](#)

Overview

Product name	RFX5 overexpression 293T lysate (whole cell)
General notes	ab94108 is a 293T cell transfected lysate in which Human RFX5 has been transiently over-expressed using a pCMV-RFX5 plasmid. The lysate is provided in 1X Sample Buffer.
Tested applications	Suitable for: WB

Properties

Mycoplasma free	Yes
Form	Liquid
Storage instructions	Shipped on dry ice. Upon delivery aliquot and store at -20°C. Avoid freeze / thaw cycles.
Storage buffer	Constituents: 0.01% Bromophenol blue, 2.3% Beta mercaptoethanol, 2% Sodium lauryl sulfate, 0.788% Tris HCl, 10% Glycerol (glycerin, glycerine)
Background	<p>Function: Activates transcription from class II MHC promoters. Recognizes X-boxes. Mediates cooperative binding between RFX and NF-Y. RFX binds the X1 box of MHC-II promoters. Tissue specificity: Ubiquitous. Disease: Defects in RFX5 are a cause of bare lymphocyte syndrome type 2 (BLS2) [MIM:209920]; also known as hereditary MHC class II deficiency or HLA class II-deficient combined immunodeficiency. BLS2 is a severe combined immunodeficiency disease with early onset. It is characterized by a profound defect in constitutive and interferon-gamma induced MHC II expression, absence of cellular and humoral T-cell response to antigen challenge, hypogammaglobulinemia and impaired antibody production. The consequence include extreme susceptibility to viral, bacterial and fungal infections. Similarity: Belongs to the RFX family.</p> <p>Contains 1 RFX-type winged-helix DNA-binding domain. Domain: The N-terminus is required for dimer formation, association with RFXANK and RFXAP, assembly of the RFX complex, and for binding of this complex to its X box target site in the MHC-II promoter. The C-terminus mediates cooperative binding between the RFX complex and NF-Y. PTM: Phosphorylated.</p>

Applications

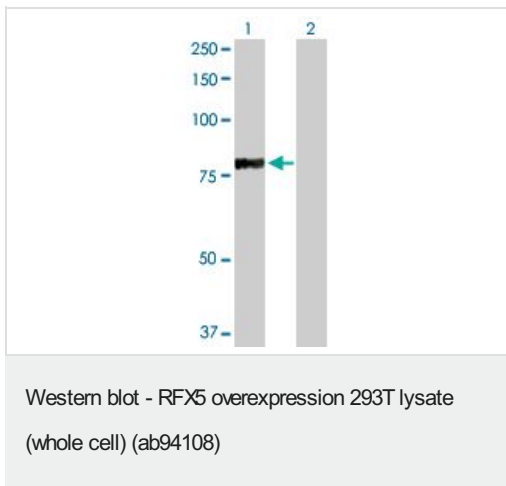
The Abpromise guarantee Our **Abpromise guarantee** covers the use of ab94108 in the following tested applications. The application notes include recommended starting dilutions; optimal dilutions/concentrations should be determined by the end user.

Application	Abreviews	Notes
WB		Use at an assay dependent dilution.

Images



ab94108 at 15µg/lane on an SDS-PAGE gel



All lanes : Anti-RFX5 antibody ([ab57920](#)) at 1/500 dilution

Lane 1 : RFX5 overexpression 293T lysate (whole cell) (ab94108)

Lane 2 : 293T non-transfected lysate

Lysates/proteins at 25 µg per lane.

Secondary

All lanes : Goat Anti-mouse IgG (H and L) HRP conjugated at 1/2500 dilution

Please note: All products are "FOR RESEARCH USE ONLY. NOT FOR USE IN DIAGNOSTIC PROCEDURES"

Our Abpromise to you: Quality guaranteed and expert technical support

- Replacement or refund for products not performing as stated on the datasheet
- Valid for 12 months from date of delivery
- Response to your inquiry within 24 hours
- We provide support in Chinese, English, French, German, Japanese and Spanish
- Extensive multi-media technical resources to help you
- We investigate all quality concerns to ensure our products perform to the highest standards

If the product does not perform as described on this datasheet, we will offer a refund or replacement. For full details of the Abpromise, please visit <https://www.abcam.com/abpromise> or contact our technical team.

Terms and conditions

- Guarantee only valid for products bought direct from Abcam or one of our authorized distributors