

## Product datasheet

# RGS2 overexpression 293T lysate (whole cell) ab94228

2 Images

### Overview

<b>Product name</b>	RGS2 overexpression 293T lysate (whole cell)
<b>General notes</b>	ab94228 is a 293T cell transfected lysate in which Human RGS2 has been transiently over-expressed using a pCMV-RGS2 plasmid. The lysate is provided in 1X Sample Buffer.
<b>Tested applications</b>	<b>Suitable for:</b> WB

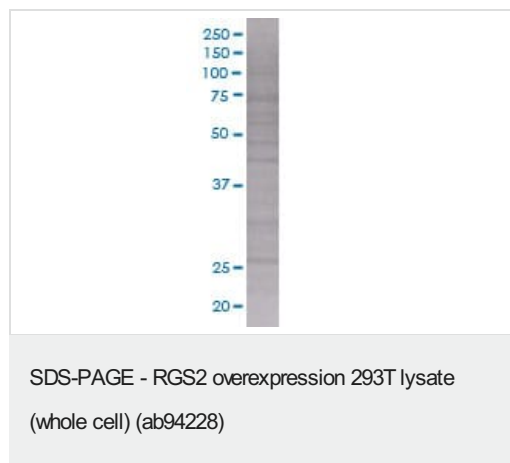
### Properties

<b>Mycoplasma free</b>	Yes
<b>Form</b>	Liquid
<b>Storage instructions</b>	Shipped on dry ice. Upon delivery aliquot and store at -20°C. Avoid freeze / thaw cycles.
<b>Storage buffer</b>	Constituents: 0.01% Bromophenol blue, 2.3% Beta mercaptoethanol, 2% Sodium lauryl sulfate, 0.788% Tris HCl, 10% Glycerol (glycerin, glycerine)
<b>Background</b>	Function: Regulates G protein-coupled receptor signaling cascades. Inhibits signal transduction by increasing the GTPase activity of G protein alpha subunits, thereby driving them into their inactive GDP-bound form (PubMed:11063746, PubMed:19478087). Plays a role in the regulation of blood pressure in response to signaling via G protein-coupled receptors and GNAQ. Plays a role in regulating the constriction and relaxation of vascular smooth muscle (By similarity). Binds EIF2B5 and blocks its activity, thereby inhibiting the translation of mRNA into protein (PubMed:19736320). PTM: Phosphorylated by protein kinase C. Phosphorylation by PRKG1 leads to activation of RGS2 activity. Similarity: Contains 1 RGS domain. Tissue specificity: Expressed in acute myelogenous leukemia (AML) and in acute lymphoblastic leukemia (ALL).

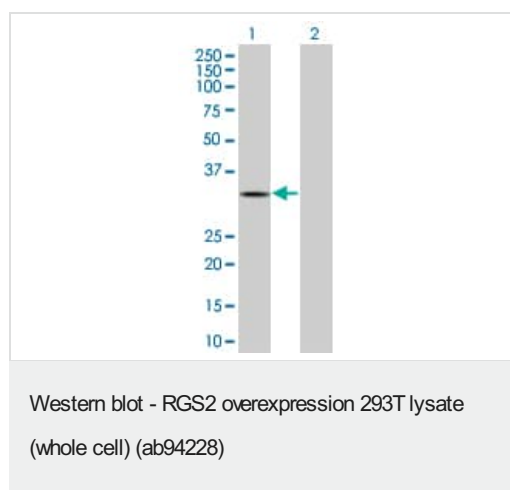
### Applications

**The Abpromise guarantee** Our **Abpromise guarantee** covers the use of ab94228 in the following tested applications. The application notes include recommended starting dilutions; optimal dilutions/concentrations should be determined by the end user.

Application	Abreviews	Notes
WB		Use at an assay dependent dilution.



ab94228 at 15µg/lane on an SDS-PAGE gel



**All lanes :** Anti-RGS2 antibody (**ab57922**) at 1/500 dilution

**Lane 1 :** RGS2 overexpression 293T lysate (whole cell) (ab94228)

**Lane 2 :** 293T non-transfected lysate

Lysates/proteins at 25 µg per lane.

### Secondary

**All lanes :** Goat Anti-mouse IgG (H and L) HRP conjugated at 1/2500 dilution

**Please note:** All products are "FOR RESEARCH USE ONLY. NOT FOR USE IN DIAGNOSTIC PROCEDURES"

## Our Abpromise to you: Quality guaranteed and expert technical support

- Replacement or refund for products not performing as stated on the datasheet
- Valid for 12 months from date of delivery
- Response to your inquiry within 24 hours
- We provide support in Chinese, English, French, German, Japanese and Spanish
- Extensive multi-media technical resources to help you
- We investigate all quality concerns to ensure our products perform to the highest standards

If the product does not perform as described on this datasheet, we will offer a refund or replacement. For full details of the Abpromise, please visit <https://www.abcam.com/abpromise> or contact our technical team.

## Terms and conditions

- Guarantee only valid for products bought direct from Abcam or one of our authorized distributors