

## Product datasheet

### TMS1 overexpression 293T lysate (whole cell) ab94129

[2 Images](#)

#### Overview

<b>Product name</b>	TMS1 overexpression 293T lysate (whole cell)
<b>General notes</b>	ab94129 is a 293T cell transfected lysate in which Human TMS1 has been transiently over-expressed using a pCMV-TMS1 plasmid. The lysate is provided in 1X Sample Buffer.
<b>Tested applications</b>	<b>Suitable for:</b> WB

#### Properties

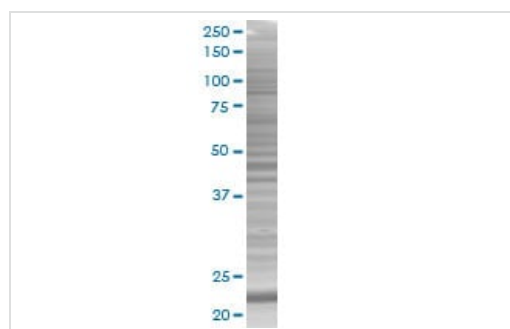
<b>Mycoplasma free</b>	Yes
<b>Form</b>	Liquid
<b>Storage instructions</b>	Shipped on dry ice. Upon delivery aliquot and store at -20°C. Avoid freeze / thaw cycles.
<b>Storage buffer</b>	Constituents: 0.01% Bromophenol blue, 2.3% Beta mercaptoethanol, 2% Sodium lauryl sulfate, 0.788% Tris HCl, 10% Glycerol (glycerin, glycerine)
<b>Background</b>	<p>Function: Promotes caspase-mediated apoptosis. This proapoptotic activity is mediated predominantly through the activation of caspase-9. May be a component of the inflammasome, a protein complex which also includes NALP2, CARD8 and CASP1 and whose function would be the activation of proinflammatory caspases. Tissue specificity: Widely expressed at low levels. Detected in peripheral blood leukocytes, lung, small intestine, spleen, thymus, colon and at lower levels in placenta, liver and kidney. Very low expression in skeletal muscle, heart and brain. Detected in the leukemia cell lines HL-60 and U937, but not in Jurkat T-cell lymphoma and Daudi Burkitt's lymphoma. Detected in the melanoma cell line WM35, but not in WM793. Not detected in HeLa cervical carcinoma cells and Molt 4 lymphocytic leukemia cells. Similarity: Contains 1 CARD domain. Contains 1 DAPIN domain. Domain: Interacts with CIAS1/PYPAF1 and PYDC1 via the DAPIN domain. PTM: Phosphorylated.</p>

#### Applications

**The Abpromise guarantee** Our **Abpromise guarantee** covers the use of ab94129 in the following tested applications. The application notes include recommended starting dilutions; optimal dilutions/concentrations should be determined by the end user.

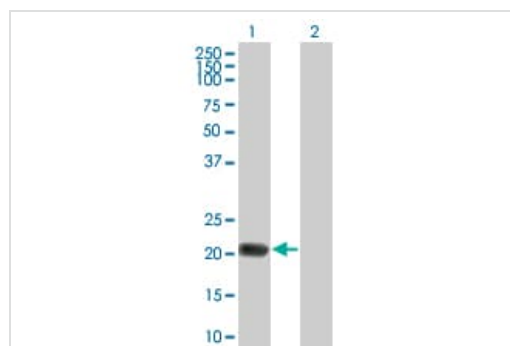
Application	Abreviews	Notes
WB		Use at an assay dependent dilution.

## Images



SDS-PAGE - TMS1 overexpression 293T lysate  
(whole cell) (ab94129)

ab94129 at 15µg/lane on an SDS-PAGE gel.



Western blot - TMS1 overexpression 293T lysate  
(whole cell) (ab94129)

**All lanes :** Anti-TMS1/ASC antibody ([ab89611](#)) at 1/500 dilution

**Lane 1 :** TMS1 overexpression 293T lysate (whole cell) (ab94129)

**Lane 2 :** 293T non-transfected lysate

Lysates/proteins at 25 µg per lane.

### Secondary

**All lanes :** Goat Anti-mouse IgG (H and L) HRP conjugated at 1/2500 dilution

**Please note:** All products are "FOR RESEARCH USE ONLY. NOT FOR USE IN DIAGNOSTIC PROCEDURES"

## Our Abpromise to you: Quality guaranteed and expert technical support

- Replacement or refund for products not performing as stated on the datasheet
- Valid for 12 months from date of delivery
- Response to your inquiry within 24 hours
- We provide support in Chinese, English, French, German, Japanese and Spanish
- Extensive multi-media technical resources to help you
- We investigate all quality concerns to ensure our products perform to the highest standards

If the product does not perform as described on this datasheet, we will offer a refund or replacement. For full details of the Abpromise, please visit <https://www.abcam.com/abpromise> or contact our technical team.

## Terms and conditions

- Guarantee only valid for products bought direct from Abcam or one of our authorized distributors