

## Product datasheet

# Ube2B overexpression 293T lysate (whole cell) ab94308

[2 Images](#)

### Overview

<b>Product name</b>	Ube2B overexpression 293T lysate (whole cell)
<b>General notes</b>	ab94308 is a 293T cell transfected lysate in which Human Ube2B has been transiently over-expressed using a pCMV-Ube2B plasmid. The lysate is provided in 1X Sample Buffer.
<b>Tested applications</b>	<b>Suitable for:</b> WB

### Properties

<b>Mycoplasma free</b>	Yes
<b>Form</b>	Liquid
<b>Storage instructions</b>	Shipped on dry ice. Upon delivery aliquot and store at -20°C. Avoid freeze / thaw cycles.
<b>Storage buffer</b>	Constituents: 0.01% Bromophenol blue, 2.3% Beta mercaptoethanol, 2% Sodium lauryl sulfate, 0.788% Tris HCl, 10% Glycerol (glycerin, glycerine)
<b>Background</b>	<p>Function: Accepts ubiquitin from the E1 complex and catalyzes its covalent attachment to other proteins. In association with the E3 enzyme BRE1 (RNF20 and/or RNF40), it plays a role in transcription regulation by catalyzing the monoubiquitination of histone H2B at 'Lys-120' to form H2BK120ub1. H2BK120ub1 gives a specific tag for epigenetic transcriptional activation, elongation by RNA polymerase II, telomeric silencing, and is also a prerequisite for H3K4me and H3K79me formation. In vitro catalyzes 'Lys-11'-, as well as 'Lys-48'- and 'Lys-63'-linked polyubiquitination. Required for postreplication repair of UV-damaged DNA. Associates to the E3 ligase RAD18 to form the UBE2B-RAD18 ubiquitin ligase complex involved in mono-ubiquitination of DNA-associated PCNA on 'Lys-164'. May be involved in neurite outgrowth.</p> <p>Pathway: Protein modification; protein ubiquitination. Similarity: Belongs to the ubiquitin-conjugating enzyme family.</p>

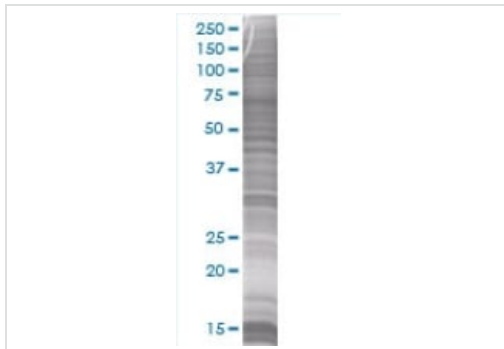
### Applications

**The Abpromise guarantee** Our **Abpromise guarantee** covers the use of ab94308 in the following tested applications. The application notes include recommended starting dilutions; optimal dilutions/concentrations should be determined by the end user.

Application	Abreviews	Notes
WB		Use at an assay dependent dilution.

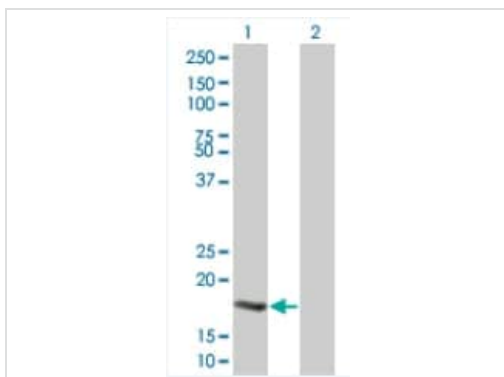
## Images

---



SDS-PAGE - Ube2B overexpression 293T lysate  
(whole cell) (ab94308)

ab94308 at 15µg/lane on an SDS-PAGE gel.



Western blot - Ube2B overexpression 293T lysate  
(whole cell) (ab94308)

**All lanes** : Anti-Ube2B antibody (**ab67118**) at 1/500 dilution

**Lane 1** : Ube2B 293T Transfected Lysate - Positive Control  
(ab94308)

**Lane 2** : 293T non-transfected lysate

Lysates/proteins at 25 µg per lane.

### Secondary

**All lanes** : Goat Anti-mouse IgG (H and L) HRP conjugate at  
1/2500 dilution

**Please note:** All products are "FOR RESEARCH USE ONLY. NOT FOR USE IN DIAGNOSTIC PROCEDURES"

## Our Abpromise to you: Quality guaranteed and expert technical support

---

- Replacement or refund for products not performing as stated on the datasheet
- Valid for 12 months from date of delivery
- Response to your inquiry within 24 hours
- We provide support in Chinese, English, French, German, Japanese and Spanish
- Extensive multi-media technical resources to help you
- We investigate all quality concerns to ensure our products perform to the highest standards

If the product does not perform as described on this datasheet, we will offer a refund or replacement. For full details of the Abpromise, please visit <https://www.abcam.com/abpromise> or contact our technical team.

## Terms and conditions

---

- Guarantee only valid for products bought direct from Abcam or one of our authorized distributors