

## Product datasheet

# BCA Protein Assay Kit ab102536

[136 References](#) [2 Images](#)

### Overview

<b>Product name</b>	BCA Protein Assay Kit
<b>Detection method</b>	Colorimetric
<b>Sample type</b>	Serum, Plasma, Cell culture extracts, Tissue Extracts
<b>Assay type</b>	Quantitative
<b>Sensitivity</b>	> 0.5 µg
<b>Range</b>	0.5 µg - 30 µg
<b>Assay time</b>	1h 30m
<b>Product overview</b>	<p>BCA Protein Assay Kit ab102536 provides a simple, rapid, detergent tolerant (up to 5%) procedure for determining the concentration of proteins in solution.</p> <p>The method utilizes a copper (Cu<sup>2+</sup>) salt which can be reduced to the cuprous state by protein(s).</p> <p>The generated Cu<sup>+</sup> ion forms an intensely colored complex with the bicinchoninic acid reagent with a very strong absorbance band centered at 562 nm.</p> <p>The intensity of the blue complex is proportional to the amount of protein in the sample. The BCA Protein Assay is suitable for measuring protein concentration in the range of 0.5-30 µg protein (0.01-0.6 mg/ml).</p> <p>Support on how to determine protein concentration can be found <a href="#">here</a>.</p>
<b>Notes</b>	<p>This product is manufactured by BioVision, an Abcam company and was previously called K812 BCA Protein Quantitation Kit. K812-1000 is the same size as the 1000 test size of ab102536.</p>

### Properties

**Storage instructions** Store at +4°C. Please refer to protocols.

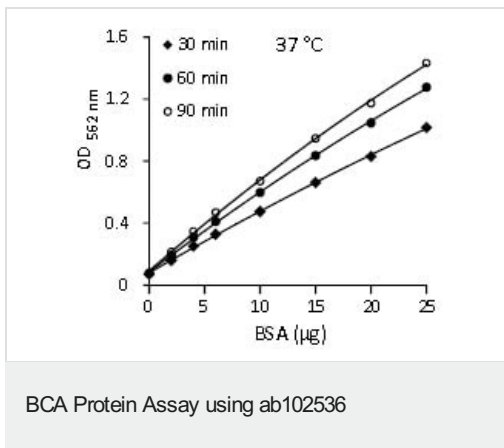
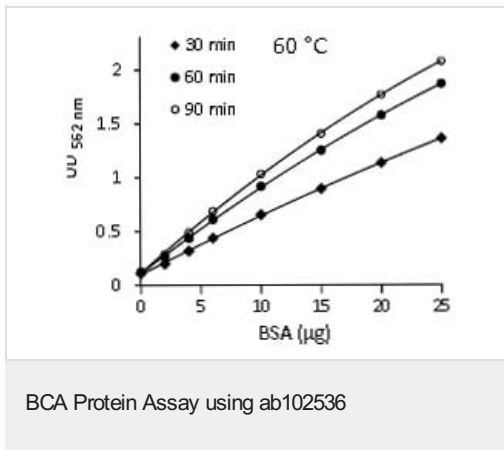
Components	1000 tests
BCA Reagent	1 x 100ml

Components	1000 tests
BSA Standard III	1 x 1ml
Copper Reagent	1 x 2ml

## Relevance

The BCA Protein assay (or Smith assay) is a biochemical assay for determining the total level of protein in a solution. The total protein concentration is determined by measuring the color change of the sample solution from green to purple which is proportional to the protein concentration.

## Images



**Please note:** All products are "FOR RESEARCH USE ONLY. NOT FOR USE IN DIAGNOSTIC PROCEDURES"

## Our Abpromise to you: Quality guaranteed and expert technical support

- Replacement or refund for products not performing as stated on the datasheet
- Valid for 12 months from date of delivery
- Response to your inquiry within 24 hours
- We provide support in Chinese, English, French, German, Japanese and Spanish
- Extensive multi-media technical resources to help you

- We investigate all quality concerns to ensure our products perform to the highest standards

If the product does not perform as described on this datasheet, we will offer a refund or replacement. For full details of the Abpromise, please visit <https://www.abcam.com/abpromise> or contact our technical team.

### **Terms and conditions**

---

- Guarantee only valid for products bought direct from Abcam or one of our authorized distributors