

# ChIP Kit Magnetic - One Step ab156907

[15 References](#) [1 Image](#)

### Overview

**Product name** ChIP Kit Magnetic - One Step

**Assay time** 5h 00m

**Product overview** Abcam's ChIP Kit Magnetic - One Step (ab156907) is a complete set of optimized buffers and reagents to carry out a successful chromatin immunoprecipitation for the selective enrichment of a chromatin fraction containing specific DNA sequences from isolated chromatin, in order to investigate the interaction between proteins and DNA in a cell. For best result, we recommend the use of [Chromatin Extraction Kit \(ab117152\)](#) for sample preparation.

Protein-DNA interactions play a critical role for cellular functions such as signal transduction, gene transcription and epigenetic silencing. In mammalian cells, interactions between the DNA-binding proteins and cognate promoter sequences are primary determinants in establishing spatial and temporal expression patterns of gene that affect homeostasis, development, and adaptation.

### Notes

#### Primers

The GAPDH primers provided with the kit are for the human sequence. If using the kit with a difference species, GAPDH primers for that species will need to be acquired.

#### ChIP assay products and guides

Find more [ChIP assay / chromatin immunoprecipitation](#) resources and products, [ChIP antibody](#) products, and other [ChIP assay kits and related reagents](#).

### Tested applications

**Suitable for:** ChIP

### Properties

**Storage instructions** Store at +4°C. Please refer to protocols.

Components	48 tests	96 tests
10X Wash Buffer	1 x 10ml	1 x 20ml
8-Well Strip Caps	1 x 12 units	1 x 24 units
96-Well PCR Plate	1 x 2 units	1 x 2 units
Anti-RNA Polymerase II (1 mg/mL)	1 x 8µl	1 x 16µl

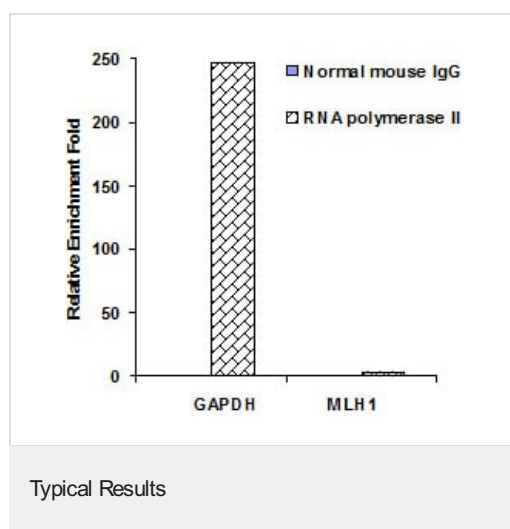
Components	48 tests	96 tests
ChIP Buffer	1 x 6ml	1 x 12ml
DNA Release Buffer	1 x 14ml	1 x 28ml
GAPDH Primer - Forward (20 µM)	1 x 8µl	1 x 16µl
GAPDH Primer - Reverse (20 µM)	1 x 8µl	1 x 16µl
Magnetic Beads	1 x 220µl	1 x 450µl
Non-Immune IgG (1 mg/mL)	1 x 10µl	1 x 20µl
Proteinase K (10 mg/mL)	1 x 55µl	1 x 110µl

## Applications

**The Abpromise guarantee** Our **Abpromise guarantee** covers the use of ab156907 in the following tested applications. The application notes include recommended starting dilutions; optimal dilutions/concentrations should be determined by the end user.

Application	Abreviews	Notes
ChIP		Use at an assay dependent concentration. The GAPDH primers provided with the kit are for the human sequence. If using the kit with a different species, GAPDH primers for that species will need to be acquired.

## Images



The data shows the analysis of enrichment of RNA polymerase II in GAPDH and MLH1 promoters by Abcam's ChIP Kit Magnetic - One Step (ab156907) with chromatin extract prepared from formaldehyde fixed colon cancer cells. Captured DNA was used for analyzing levels of RNA polymerase II enriched in the GAPDH and MLH1 promoters.

**Please note:** All products are "FOR RESEARCH USE ONLY. NOT FOR USE IN DIAGNOSTIC PROCEDURES"

## **Our Abpromise to you: Quality guaranteed and expert technical support**

---

- Replacement or refund for products not performing as stated on the datasheet
- Valid for 12 months from date of delivery
- Response to your inquiry within 24 hours
  
- We provide support in Chinese, English, French, German, Japanese and Spanish
- Extensive multi-media technical resources to help you
- We investigate all quality concerns to ensure our products perform to the highest standards

If the product does not perform as described on this datasheet, we will offer a refund or replacement. For full details of the Abpromise, please visit <https://www.abcam.com/abpromise> or contact our technical team.

## **Terms and conditions**

---

- Guarantee only valid for products bought direct from Abcam or one of our authorized distributors