

## Product datasheet

# Nuclear yellow (Hoechst S769121) ab138903

[2 References](#) [2 Images](#)

### Overview

<b>Product name</b>	Nuclear yellow (Hoechst S769121)
<b>Tested applications</b>	<b>Suitable for:</b> Flow Cyt, ICC/IF
<b>General notes</b>	<p>The Hoechst stains are a family of fluorescent stains for labeling DNA used in fluorescence microscopy and flow cytometry. Because these fluorescent stains label DNA, they are also commonly used to visualize nuclei and mitochondria.</p> <p>The long-wavelength tracer Nuclear yellow is often combined with the popular retrograde tracer True Blue for two-color neuronal mapping. In neuronal cells, Nuclear yellow primarily stains the nucleus with yellow fluorescence, whereas True Blue is a UV light–excitable, divalent cationic dye that stains the cytoplasm with blue fluorescence. Both Nuclear yellow and True Blue are stable when subjected to immunohistochemical processing and can be used to photoconvert DAB into an insoluble, electron-dense reaction product.</p> <p>Molecular Weight: 651.01          Appearance: Light yellow powder          Solvents: water or dimethylsulfoxide (DMSO)</p> <p><b>SPECTRAL PROPERTIES:</b></p> <p><b>Excitation:</b> Ex<sub>max</sub> 355 nm</p> <p><b>Emission:</b> Em<sub>max</sub> 495 nm*</p>

### Properties

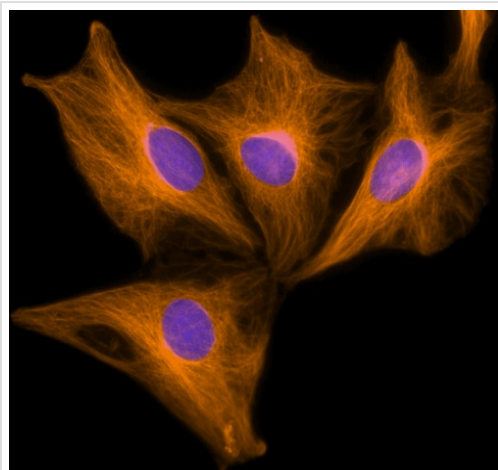
<b>Form</b>	Lyophilized
<b>Storage instructions</b>	Store at -20°C. Store In the Dark.

### Applications

**The Abpromise guarantee** Our **Abpromise guarantee** covers the use of ab138903 in the following tested applications. The application notes include recommended starting dilutions; optimal dilutions/concentrations should be determined by the end user.

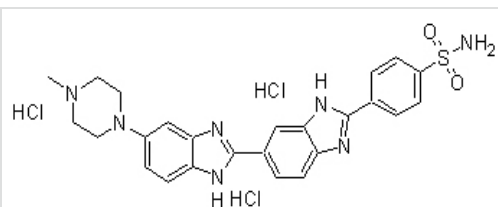
Application	Abreviews	Notes
Flow Cyt		Use at an assay dependent concentration.
ICC/IF		Use at an assay dependent concentration.

## Images



Immunocytochemistry/ Immunofluorescence -  
Nuclear yellow (Hoechst S769121) (ab138903)

ICC/IF image of **ab6046** stained HeLa cells. The cells were 100% methanol fixed and then incubated in 1% BSA / 10% normal donkey serum / 0.3M glycine in 0.1% PBS-Tween for 1h to permeabilize the cells and block non-specific protein-protein interactions. The cells were then incubated with the antibody (**ab6046**, 1µg/ml) overnight at +4°C. The secondary antibody (orange) was **ab150064** Alexa Fluor® 594 donkey anti-rabbit IgG (H+L) used at 2µg/ml for 1h. Nuclear Yellow (Hoechst S769121) (ab138903) was used to stain the cell nuclei (purple/blue) at a 250µg/ml dilution with a 60 minute incubation.



Nuclear yellow (Hoechst S769121) (ab138903)

Chemical structure of ab138903 Nuclear yellow (Hoechst S769121).

Chemical structure of ab138903 Nuclear yellow (Hoechst S769121).

**Please note:** All products are "FOR RESEARCH USE ONLY. NOT FOR USE IN DIAGNOSTIC PROCEDURES"

## Our Abpromise to you: Quality guaranteed and expert technical support

- Replacement or refund for products not performing as stated on the datasheet
- Valid for 12 months from date of delivery
- Response to your inquiry within 24 hours
- We provide support in Chinese, English, French, German, Japanese and Spanish
- Extensive multi-media technical resources to help you
- We investigate all quality concerns to ensure our products perform to the highest standards

If the product does not perform as described on this datasheet, we will offer a refund or replacement. For full details of the Abpromise,

please visit <https://www.abcam.com/abpromise> or contact our technical team.

#### **Terms and conditions**

---

- Guarantee only valid for products bought direct from Abcam or one of our authorized distributors