

6-keto-PGF1 alpha ELISA Kit ab133023

1 References 2 Images

Overview

Product name 6-keto-PGF1 alpha ELISA Kit

Detection method Colorimetric

Precision

Intra-assay

Sample	n	Mean	SD	CV%
Low conc.	10	41pg/ml		13.1%
Medium conc.	10	240pg/ml		4.8%
High conc.	10	4886pg/ml		2.9%

Inter-assay

Sample	n	Mean	SD	CV%
Low conc.	8	239pg/ml		7.9%
Medium conc.	8	1220pg/ml		5.2%
High conc.	8	4828pg/ml		6%

Sample type Cell culture supernatant, Saliva, Urine, Serum, Plasma, Tissue Culture Media

Assay type Competitive

Sensitivity 1.4 pg/ml

Range 3.2 pg/ml - 50000 pg/ml

Recovery

Sample specific recovery

Sample type	Average %	Range
Saliva	110.7	% - %
Urine	108.7	% - %
Serum	108.4	% - %

Sample type	Average %	Range
Tissue Culture Media	106.7	% - %

#### Assay time

3h 00m

#### Assay duration

Multiple steps standard assay

#### Species reactivity

**Reacts with:** Human, a wide range of other species

#### Product overview

Abcam's 6-keto-PGF<sub>1</sub> alpha *in vitro* competitive ELISA (Enzyme-Linked Immunosorbent Assay) kit is designed for the accurate quantitative measurement of 6-keto-PGF<sub>1</sub> alpha in serum, urine, tissue culture media and other biological fluids.

A donkey anti-sheep IgG antibody has been precoated onto 96-well plates. Standards or test samples are added to the wells, along with an alkaline phosphatase (AP) conjugated-6-keto-PGF<sub>1</sub> alpha antigen and a polyclonal sheep antibody specific to 6-keto-PGF<sub>1</sub> alpha. After incubation the excess reagents are washed away. pNpp substrate is added. After a short incubation the enzyme reaction is stopped and the yellow color generated by alkaline phosphatase is read at 405 nm. The intensity of the yellow coloration is inversely proportional to the amount of 6-keto-PGF<sub>1</sub>α captured in the plate.

#### Notes

6-keto-PGF<sub>1</sub>α is a stable hydrolysis product of prostacyclin (PGI<sub>2</sub>). Due to the short half-life of PGI<sub>2</sub> in buffer (2-3 minutes) the production of prostacyclin is typically monitored by measurement of the 6-keto-PGF<sub>1</sub>α metabolite and its derivative in urine, 2,3-dinor-6-keto-PGF<sub>1</sub>α. PGI<sub>2</sub> has autocrine functions that include platelet aggregation, inhibition of vasoconstrictor responses to pressor hormones, platelet anti- and disaggregatory properties, and reproductive functions. The effects are induced by receptor-mediated elevation of cAMP. Prostacyclin has clinical applications in atherosclerosis and protection from myocardial ischemia.

#### Cross Reactivity

Compound	Cross Reactivity
6-keto-PGF <sub>1</sub> α	100%
2,3-dinor-6-keto-PGF <sub>1</sub> α	3.17%
PGF <sub>2</sub> α	1.67%
PGD <sub>2</sub>	0.60%
PGF <sub>1</sub> α	0.60%
PGE <sub>1</sub>	0.20%
6,15-diketo-13,14-dihydro-PGF <sub>1</sub> α	0.12%

13,14-dihydro-15-keto-PGF <sub>1α</sub>	<0.01%
15-keto-PGF <sub>2α</sub>	<0.01%
PGA <sub>2</sub>	<0.01%
PGB <sub>1</sub>	<0.01%
PGE <sub>2</sub>	<0.01%
Thromboxane B <sub>2</sub>	<0.01%
15-HpETE	<0.01%
2-Arachidonoylglycerol	<0.01%
Anandamide	<0.01%

#### Platform

Microplate

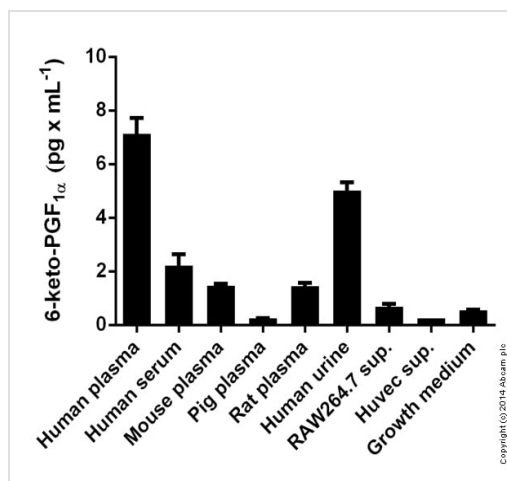
#### Properties

#### Storage instructions

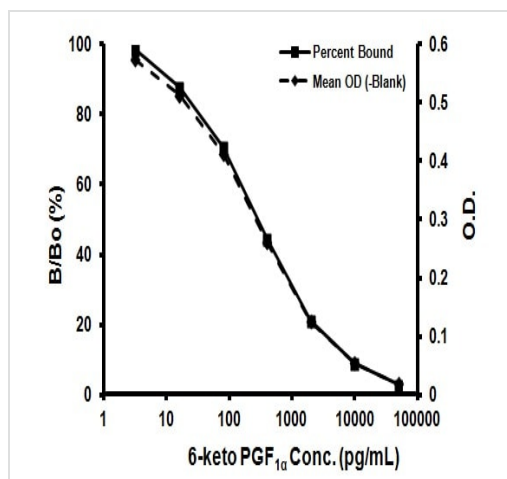
Store at +4°C. Please refer to protocols.

Components	1 x 96 tests
20X Wash Buffer Concentrate	1 x 27ml
6-keto-PGF <sub>1</sub> alpha Alkaline Phosphatase Conjugate	1 x 5ml
6-keto-PGF <sub>1</sub> alpha EIA Antibody	1 x 5ml
6-keto-PGF <sub>1</sub> alpha Standard	1 x 500μl
Assay Buffer	1 x 27ml
Donkey anti-sheep IgG Microplate (12 x 8 wells)	1 unit
Plate Sealer	1 unit
pNpp Substrate	1 x 20ml
Stop Solution	1 x 5ml

#### Images



Competitive binding assay - 133023 6-keto-PGF1  
alpha ELISA Kit



Typical Standard Curve

Representative Standard Curve using ab133023.

**Please note:** All products are "FOR RESEARCH USE ONLY. NOT FOR USE IN DIAGNOSTIC PROCEDURES"

### Our Abpromise to you: Quality guaranteed and expert technical support

- Replacement or refund for products not performing as stated on the datasheet
- Valid for 12 months from date of delivery
- Response to your inquiry within 24 hours
- We provide support in Chinese, English, French, German, Japanese and Spanish
- Extensive multi-media technical resources to help you
- We investigate all quality concerns to ensure our products perform to the highest standards

If the product does not perform as described on this datasheet, we will offer a refund or replacement. For full details of the Abpromise, please visit <https://www.abcam.com/abpromise> or contact our technical team.

## Terms and conditions

---

- Guarantee only valid for products bought direct from Abcam or one of our authorized distributors