



Product datasheet

Albumin Pig ELISA Kit **ab108794**

★★★★★ [1 Abreviews](#) [2 References](#) [1 Image](#)

Overview

Product name	Albumin Pig ELISA Kit			
Detection method	Colorimetric			
Precision	Intra-assay			
	Sample	n	Mean	SD
	Overall			CV%
				3.3%
	Inter-assay			
	Sample	n	Mean	SD
	Overall			CV%
				8.7%
Sample type	Cell culture supernatant, Urine, Tissue, Cell Lysate			
Assay type	Sandwich (quantitative)			
Sensitivity	= 0.63 ng/ml			
Range	1.563 ng/ml - 100 ng/ml			
Recovery	95 %			
Assay time	4h 00m			
Assay duration	Multiple steps standard assay			
Species reactivity	Reacts with: Pig			
Product overview	Abcam's Albumin Pig <i>in vitro</i> ELISA (Enzyme-Linked Immunosorbent Assay) kit is designed for the quantitative measurement of pig Albumin levels in urine and cell culture supernatants.			

An Albumin specific antibody has been precoated onto 96-well plates and blocked. Standards or test samples are added to the wells and subsequently an Albumin specific biotinylated detection antibody is added and then followed by washing with wash buffer. Streptavidin-Peroxidase Conjugate is added and unbound conjugates are washed away with wash buffer. TMB is then used to visualize Streptavidin-Peroxidase enzymatic reaction. TMB is catalyzed by Streptavidin-Peroxidase to produce a blue color product that changes into yellow after adding acidic stop solution. The density of yellow coloration is directly proportional to the amount of Albumin captured in plate.

The entire kit may be stored at -20°C for long term storage before reconstitution - Avoid repeated freeze-thaw cycles.

Platform Microplate

Properties

Storage instructions Store at -20°C. Please refer to protocols.

Components	1 x 96 tests
100X Streptavidin-Peroxidase Conjugate	1 x 80µl
10X Diluent N Concentrate	1 x 30ml
20X Wash Buffer Concentrate	2 x 30ml
25X Biotinylated Pig Albumin Antibody	1 x 200µl
Albumin Microplate (12 x 8 well strips)	1 unit
Albumin Standard	1 vial
Chromogen Substrate	1 x 7ml
Sealing Tapes	3 units
Stop Solution	1 x 11ml

Function Serum albumin, the main protein of plasma, has a good binding capacity for water, Ca(2+), Na(+), K(+), fatty acids, hormones, bilirubin and drugs. Its main function is the regulation of the colloidal osmotic pressure of blood. Major zinc transporter in plasma, typically binds about 80% of all plasma zinc.

Tissue specificity Plasma.

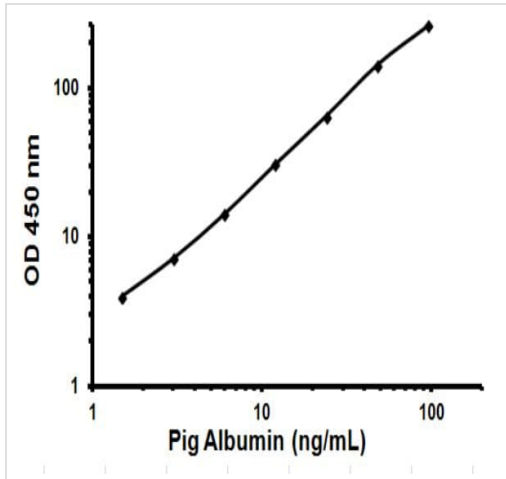
Involvement in disease Defects in ALB are a cause of familial dysalbuminemic hyperthyroxinemia (FDH) [MIM:103600]. FDH is a form of euthyroid hyperthyroxinemia that is due to increased affinity of ALB for T(4). It is the most common cause of inherited euthyroid hyperthyroxinemia in Caucasian population.

Sequence similarities Belongs to the ALB/AFP/VDB family.
Contains 3 albumin domains.

Post-translational modifications Kenitra variant is partially O-glycosylated at Thr-620. It has two new disulfide bonds Cys-600 to Cys-602 and Cys-601 to Cys-606.
Glycated in diabetic patients.
Phosphorylation sites are present in the extracellular medium.
Acetylated on Lys-223 by acetylsalicylic acid.

Cellular localization Secreted.

Images



Representative Standard Curve using ab108794

Typical Standard Curve

Please note: All products are "FOR RESEARCH USE ONLY. NOT FOR USE IN DIAGNOSTIC PROCEDURES"

Our Abpromise to you: Quality guaranteed and expert technical support

- Replacement or refund for products not performing as stated on the datasheet
- Valid for 12 months from date of delivery
- Response to your inquiry within 24 hours
- We provide support in Chinese, English, French, German, Japanese and Spanish
- Extensive multi-media technical resources to help you
- We investigate all quality concerns to ensure our products perform to the highest standards

If the product does not perform as described on this datasheet, we will offer a refund or replacement. For full details of the Abpromise, please visit <https://www.abcam.com/abpromise> or contact our technical team.

Terms and conditions

- Guarantee only valid for products bought direct from Abcam or one of our authorized distributors