

Cetuximab ELISA Kit ab237648

[1 Image](#)

Overview

Product name Cetuximab ELISA Kit

Detection method Colorimetric

Precision

Intra-assay

Sample	n	Mean	SD	CV%
Overall				< 15%

Inter-assay

Sample	n	Mean	SD	CV%
Overall				< 15%

Sample type Serum, Plasma

Assay type Sandwich (quantitative)

Sensitivity 100 ng/ml

Range 100 ng/ml - 3000 ng/ml

Recovery

Sample specific recovery

Sample type	Average %	Range
Serum		85% - 115%

Assay duration Multiple steps standard assay

Species reactivity **Reacts with:** Human

Product overview Note: Cetuximab ELISA kit ab237648 is intended for Research Use Only, not for use in diagnostic procedures.

This kit is a sandwich based ELISA kit. The color developed is proportional to the amount of Cetuximab in the sample or standard. Results of samples can be determined directly using the standard curve.

Notes This product is manufactured by BioVision, an Abcam company and was previously called E4379 BioSim™ Cetuximab (Human) ELISA Kit. E4379-100 is the same size as the 96 test size of

ab237648.

Platform

Microplate

Properties

Storage instructions

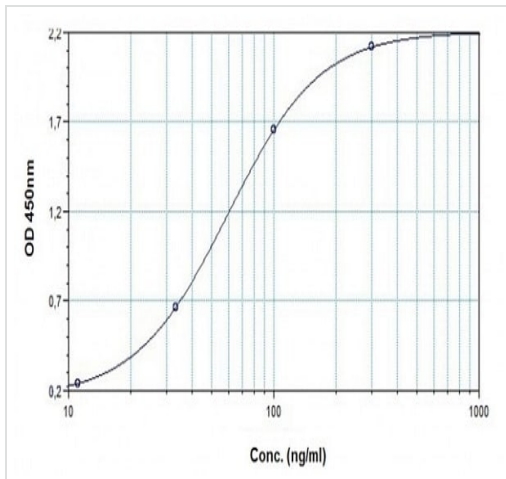
Store at +4°C. Please refer to protocols.

Components	96 tests	96 tests
Assay Buffer	2 x 50ml	2 x 50ml
Cetuximab Standard S1	1 x 0.3ml	1 x 0.3ml
Cetuximab Standard S2	1 x 0.3ml	1 x 0.3ml
Cetuximab Standard S3	1 x 0.3ml	1 x 0.3ml
Cetuximab Standard S4	1 x 0.3ml	1 x 0.3ml
Cetuximab Standard S5	1 x 0.3ml	1 x 0.3ml
Cetuximab Standard S6	1 x 0.3ml	1 x 0.3ml
Cetuximab Standard S7	1 x 0.3ml	1 x 0.3ml
HRP-conjugate Probe	1 x 12ml	1 x 12ml
Micro ELISA Plate	1 unit	1 unit
Plate sealers	2 units	2 units
Stop Solution	1 x 12ml	1 x 12ml
TMB substrate	1 x 12ml	1 x 12ml
Wash buffer (20X)	1 x 50ml	1 x 50ml

Relevance

Cetuximab is a chimeric monoclonal antibody of the immunoglobulin G1 (IgG1) and FDA-approved epidermal growth factor receptor (EGFR) inhibitor. Preclinical studies have shown that cetuximab enhances the antitumour effects of chemotherapy as well as radiotherapy by inhibiting cell proliferation, angiogenesis and metastasis and by promoting apoptosis is used for the treatment of metastatic colorectal cancer, metastatic non-small cell lung cancer and head and neck cancer. Cetuximab blocks growth factor-induced activation of the downstream mitogen-activated protein kinase, inhibiting cell proliferation. It also decreases angiogenic factors, inhibits tumor-cell invasion and metastasis via downregulation of matrix metalloproteinases (MMPs) and VEGF, and promotes apoptosis by upregulating apoptotic protein, Bax, with the help of other chemotherapeutic agents.

Images



Typical Standard Curve: This standard curve is for demonstration only. A standard curve must be run with each assay.

Example of Cetuximab standard curve

Please note: All products are "FOR RESEARCH USE ONLY. NOT FOR USE IN DIAGNOSTIC PROCEDURES"

Our Abpromise to you: Quality guaranteed and expert technical support

- Replacement or refund for products not performing as stated on the datasheet
- Valid for 12 months from date of delivery
- Response to your inquiry within 24 hours
- We provide support in Chinese, English, French, German, Japanese and Spanish
- Extensive multi-media technical resources to help you
- We investigate all quality concerns to ensure our products perform to the highest standards

If the product does not perform as described on this datasheet, we will offer a refund or replacement. For full details of the Abpromise, please visit <https://www.abcam.com/abpromise> or contact our technical team.

Terms and conditions

- Guarantee only valid for products bought direct from Abcam or one of our authorized distributors