

Denosumab ELISA Kit ab237649

1 Image

Overview

Product name	Denosumab ELISA Kit				
Detection method	Colorimetric				
Precision	Intra-assay				
	Sample	n	Mean	SD	CV%
	Overall				< 15%
	Inter-assay				
	Sample	n	Mean	SD	CV%
	Overall				< 15%
Sample type	Serum, Plasma				
Assay type	Sandwich (quantitative)				
Sensitivity	3 ng/ml				
Range	3 ng/ml - 300 ng/ml				
Recovery	Sample specific recovery				
	Sample type	Average %		Range	
	Serum			85% - 115%	
Assay duration	Multiple steps standard assay				
Species reactivity	Reacts with: Human				
Product overview	Note: Denosumab ELISA kit ab237649 is intended for Research Use Only, not for use in diagnostic procedures.				

This kit is a sandwich based ELISA kit. The color developed is proportional to the amount of Denosumab in the sample or standard. Results of samples can be determined directly using the standard curve.

**Notes** This product is manufactured by BioVision, an Abcam company and was previously called E4380 BioSim™ Denosumab (Human) ELISA Kit. E4380-100 is the same size as the 96 test size of

ab237649.

**Platform**

Microplate

**Properties**

**Storage instructions**

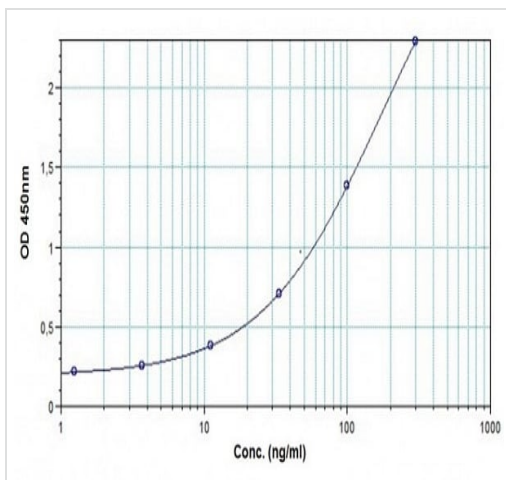
Store at +4°C. Please refer to protocols.

Components	96 tests
Micro ELISA Plate	1 unit
Denosumab Standard S1	1 x 1ml
Denosumab Standard S2	1 x 1ml
Denosumab Standard S3	1 x 1ml
Denosumab Standard S4	1 x 1ml
Denosumab Standard S5	1 x 1ml
Denosumab Standard S6	1 x 1ml
Denosumab Standard S7	1 x 1ml
Assay Buffer	1 x 50ml
HRP-conjugate Probe	1 x 12ml
TMB substrate	1 x 12ml
Stop Solution	1 x 12ml
Wash buffer (20X)	1 x 50ml
Plate sealers	2 units

**Relevance**

Denosumab is a human monoclonal antibody that binds to RANKL, a transmembrane or soluble protein essential for the formation, function, and survival of osteoclasts, the cells responsible for bone resorption. Prolia prevents RANKL from activating its receptor, RANK, on the surface of osteoclasts and their precursors. Prevention of the RANKL/RANK interaction inhibits osteoclast formation, function, and survival, thereby decreasing bone resorption and increasing bone mass and strength in both cortical and trabecular bone.

**Images**



Example of Denosumab standard curve

**Typical Standard Curve:** This standard curve is for demonstration only. A standard curve must be run with each assay.

**Please note:** All products are "FOR RESEARCH USE ONLY. NOT FOR USE IN DIAGNOSTIC PROCEDURES"

### Our Abpromise to you: Quality guaranteed and expert technical support

- Replacement or refund for products not performing as stated on the datasheet
- Valid for 12 months from date of delivery
- Response to your inquiry within 24 hours
- We provide support in Chinese, English, French, German, Japanese and Spanish
- Extensive multi-media technical resources to help you
- We investigate all quality concerns to ensure our products perform to the highest standards

If the product does not perform as described on this datasheet, we will offer a refund or replacement. For full details of the Abpromise, please visit <https://www.abcam.com/abpromise> or contact our technical team.

### Terms and conditions

- Guarantee only valid for products bought direct from Abcam or one of our authorized distributors