

1 References

Overview

Product name	Etanercept ELISA Kit																				
Detection method	Colorimetric																				
Precision	<div>Intra-assay</div> <table><tr><th>Sample</th><th>n</th><th>Mean</th><th>SD</th><th>CV%</th></tr><tr><td>Overall</td><td></td><td></td><td></td><td>< 15%</td></tr></table> <div>Inter-assay</div> <table><tr><th>Sample</th><th>n</th><th>Mean</th><th>SD</th><th>CV%</th></tr><tr><td>Overall</td><td></td><td></td><td></td><td>< 15%</td></tr></table>	Sample	n	Mean	SD	CV%	Overall				< 15%	Sample	n	Mean	SD	CV%	Overall				< 15%
Sample	n	Mean	SD	CV%																	
Overall				< 15%																	
Sample	n	Mean	SD	CV%																	
Overall				< 15%																	
Sample type	Serum, Plasma																				
Assay type	Quantitative																				
Sensitivity	0.1 µg/ml																				
Range	0.1 µg/ml - 3 µg/ml																				
Recovery	<div>Sample specific recovery</div> <table><tr><th>Sample type</th><th>Average %</th><th>Range</th></tr><tr><td>Serum</td><td></td><td>85% - 115%</td></tr></table>	Sample type	Average %	Range	Serum		85% - 115%														
Sample type	Average %	Range																			
Serum		85% - 115%																			
Assay duration	Multiple steps standard assay																				
Species reactivity	Reacts with: Human																				
Product overview	Note: Etanercept ELISA kit ab237643 is intended for Research Use Only, not for use in diagnostic procedures.																				

This kit is a sandwich based ELISA kit. The color developed is proportional to the amount of Etanercept in the sample or standard. Results of samples can be determined directly using the standard curve.

Notes

This product is manufactured by BioVision, an Abcam company and was previously called E4374 BioSim™ Etanercept (Human) ELISA Kit. E4374-100 is the same size as the 96 test size of

ab237643.

Platform

Microplate

Properties

Storage instructions

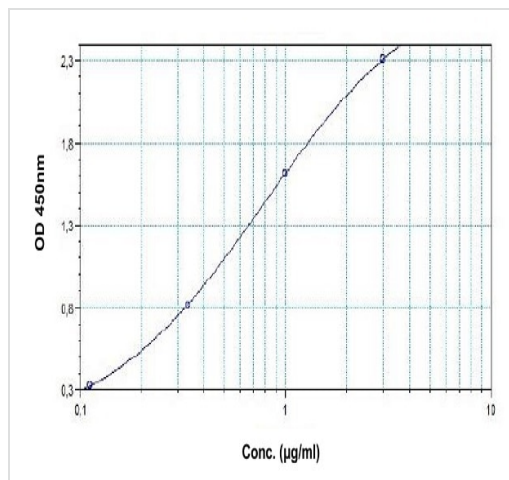
Store at +4°C. Please refer to protocols.

Components	1 x 96 tests
Assay Buffer	1 x 50ml
Etanercept Standard S1	1 x 300µl
Etanercept Standard S2	1 x 300µl
Etanercept Standard S3	1 x 300µl
Etanercept Standard S4	1 x 300µl
Etanercept Standard S5	1 x 300µl
Etanercept Standard S6	1 x 300µl
Etanercept Standard S7	1 x 300µl
HRP-conjugate Probe	1 x 12ml
Micro ELISA Plate	1 unit
Plate sealers	2 units
Stop Solution	1 x 12ml
TMB substrate	1 x 12ml
Wash buffer (20X)	1 x 50ml

Relevance

Etanercept is a therapeutic fusion protein specific for Tumor Necrosis Factor-Alpha (TNF-α) and is used to treat rheumatic arthritis, intestinal disorders, dermatological diseases and cancer. Etanercept specifically binds to TNF alpha and blocks its interaction with cell surface TNF receptors and reduces the inflammation and subsequently improves the patient's health. Drug level quantification can be important to adapt patient prescription or to switch to an alternative TNF inhibitor drug.

Images



Typical Standard Curve: This standard curve is for demonstration only. A standard curve must be run with each assay.

Example of Etanercept standard curve

Please note: All products are "FOR RESEARCH USE ONLY. NOT FOR USE IN DIAGNOSTIC PROCEDURES"

Our Abpromise to you: Quality guaranteed and expert technical support

- Replacement or refund for products not performing as stated on the datasheet
- Valid for 12 months from date of delivery
- Response to your inquiry within 24 hours
- We provide support in Chinese, English, French, German, Japanese and Spanish
- Extensive multi-media technical resources to help you
- We investigate all quality concerns to ensure our products perform to the highest standards

If the product does not perform as described on this datasheet, we will offer a refund or replacement. For full details of the Abpromise, please visit <https://www.abcam.com/abpromise> or contact our technical team.

Terms and conditions

- Guarantee only valid for products bought direct from Abcam or one of our authorized distributors