

## 1 Image

Product name	Golimumab ELISA Kit
Detection method	Colorimetric
Precision	Intra-assay

Sample	n	Mean	SD	CV%
Overall				< 15%

<b>Sample type</b>	Serum, Plasma
<b>Assay type</b>	Sandwich (quantitative)
<b>Sensitivity</b>	100 ng/ml
<b>Range</b>	100 ng/ml - 3000 ng/ml
<b>Recovery</b>	

Sample type	Average %	Range
Serum		85% - 115%

<b>Assay duration</b>	Multiple steps standard assay
-----------------------	-------------------------------

**Species reactivity** **Reacts with:** Human

**Product overview** Note: Golimumab ELISA kit ab237646 is intended for Research Use Only, not for use in diagnostic procedures.

This kit is a sandwich based ELISA kit. The color developed is proportional to the amount of Golimumab in the sample or standard. Results of samples can be determined directly using the standard curve.

**Notes** This product is manufactured by BioVision, an Abcam company and was previously called E4377  
BioSim™ Golimumab (Human) ELISA Kit. E4377-100 is the same size as the 96 test size of

ab237646.

**Platform**

Microplate (12 x 8 well strips)

**Properties****Storage instructions**

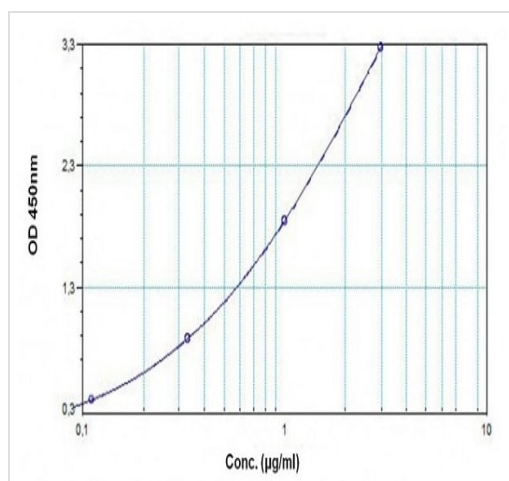
Store at +4°C. Please refer to protocols.

Components	96 tests
Micro ELISA Plate	1 unit
Golimumab Standard S1	1 x 0.25ml
Golimumab Standard S2	1 x 0.25ml
Golimumab Standard S3	1 x 0.25ml
Golimumab Standard S4	1 x 0.25ml
Golimumab Standard S5	1 x 0.25ml
Golimumab Standard S6	1 x 0.25ml
Golimumab Standard S7	1 x 0.25ml
Assay Buffer	1 x 50ml
HRP-conjugate Probe	1 x 12ml
TMB substrate	1 x 12ml
Stop Solution	1 x 12ml
Wash buffer (20X)	1 x 50ml
Plate sealers	2 units

**Relevance**

Golimumab (Simponi®) is a human immunoglobulin G1? monoclonal antibody which is specific for pro-inflammatory cytokine, tumor necrosis factor- $\alpha$  (TNF $\alpha$ ). In 2009, it was approved by FDA for the treatment of rheumatoid arthritis, psoriatic arthritis and ankylosing spondylitis in adult patients. Elevated levels of TNF are found in the synovial fluid of rheumatoid arthritis, including juvenile idiopathic arthritis, psoriatic arthritis, and ankylosing spondylitis patients and play an important role in both the pathologic inflammation and the joint destruction that are hallmarks of these diseases. Increased levels of TNF are also found in psoriasis (Ps) plaques. Golimumab binds to both the soluble and transmembrane bioactive forms of human TNF and prevent TNF from binding to its receptors and finally inhibits biological activity of TNF.

**Images**



This standard curve is for demonstration only. A standard curve must be run with each assay.

Example of Golimumab standard curve

**Please note:** All products are "FOR RESEARCH USE ONLY. NOT FOR USE IN DIAGNOSTIC PROCEDURES"

### Our Abpromise to you: Quality guaranteed and expert technical support

- Replacement or refund for products not performing as stated on the datasheet
- Valid for 12 months from date of delivery
- Response to your inquiry within 24 hours
- We provide support in Chinese, English, French, German, Japanese and Spanish
- Extensive multi-media technical resources to help you
- We investigate all quality concerns to ensure our products perform to the highest standards

If the product does not perform as described on this datasheet, we will offer a refund or replacement. For full details of the Abpromise, please visit <https://www.abcam.com/abpromise> or contact our technical team.

### Terms and conditions

- Guarantee only valid for products bought direct from Abcam or one of our authorized distributors