

## Product datasheet

### anti-HER2 mab ELISA Kit ab237655

[1 Image](#)

#### Overview

**Product name** anti-HER2 mab ELISA Kit

**Detection method** Colorimetric

**Precision**

Intra-assay

Sample	n	Mean	SD	CV%
Overall				< 15%

Inter-assay

Sample	n	Mean	SD	CV%
Overall				< 15%

**Sample type** Serum, Plasma

**Assay type** Quantitative

**Sensitivity** 30 ng/ml

**Range** 62 ng/ml - 500 ng/ml

**Recovery**

Sample specific recovery

Sample type	Average %	Range
Serum		85% - 115%

**Assay duration** Multiple steps standard assay

**Species reactivity** **Reacts with:** Human

**Product overview** anti-HER2 mab ELISA Kit (ab237655) is designed to quantify/measure the antibody against HER2 mab with high specificity and sensitivity in biological matrices.

**Notes** This product is manufactured by BioVision, an Abcam company and was previously called E4386 BioSim™ anti-HER2 Mab (Human) ELISA Kit. E4386-100 is the same size as the 96 test size of ab237655.

**Platform** Microplate

## Properties

---

### Storage instructions

Store at +4°C. Please refer to protocols.

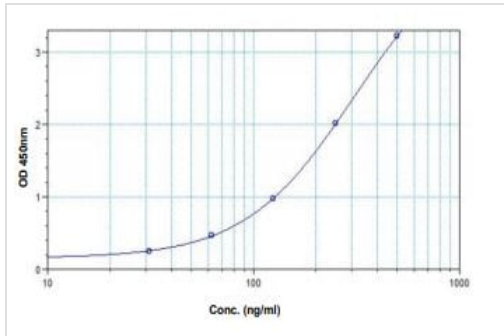
Components	96 tests
Anti-HER2 mab Standard S1	1 x 1ml
Anti-HER2 mab Standard S2	1 x 1ml
Anti-HER2 mab Standard S3	1 x 1ml
Anti-HER2 mab Standard S4	1 x 1ml
Anti-HER2 mab Standard S5	1 x 1ml
Anti-HER2 mab Standard S6	1 x 1ml
Anti-HER2 mab Standard S7	1 x 1ml
Assay Buffer	1 x 50ml
Confirmation Reagent	1 x 12ml
Micro ELISA Plate	1 unit
Peroxidase Conjugate	1 x 12ml
Plate sealers	2 units
Stop Solution	1 x 12ml
TMB substrate	1 x 12ml
Wash buffer (20X)	1 x 50ml

### Relevance

This product is a recombinant DNA-derived humanized monoclonal antibody that selectively targets the extracellular domain of the human epidermal growth factor receptor 2 protein (HER2). It has anti-tumor activity against HER2-positive human breast tumor cells in laboratory models and is active for the treatment of women with HER2-overexpressing breast cancers. This antibody was approved in 1998 for clinical use for HER2 overexpressing metastatic breast cancer. In HER2 overexpressing cells, it markedly down-regulates HER2 expression by accelerating receptor endocytosis and degradation and inhibits cell cycle progression by inducing the formation of p27Kip1/Cdk2 complexes.

### Images

---



Standard Curve

**Typical Standard Curve:** This standard curve is for demonstration only. A standard curve must be run with each assay.

**Please note:** All products are "FOR RESEARCH USE ONLY. NOT FOR USE IN DIAGNOSTIC PROCEDURES"

### Our Abpromise to you: Quality guaranteed and expert technical support

---

- Replacement or refund for products not performing as stated on the datasheet
- Valid for 12 months from date of delivery
- Response to your inquiry within 24 hours
- We provide support in Chinese, English, French, German, Japanese and Spanish
- Extensive multi-media technical resources to help you
- We investigate all quality concerns to ensure our products perform to the highest standards

If the product does not perform as described on this datasheet, we will offer a refund or replacement. For full details of the Abpromise, please visit <https://www.abcam.com/abpromise> or contact our technical team.

### Terms and conditions

---

- Guarantee only valid for products bought direct from Abcam or one of our authorized distributors