

His-tag Protein ELISA kit ab285248

2 Images

Overview

Product name	His-tag Protein ELISA kit
Detection method	Colorimetric
Sample type	Cell Lysate
Assay type	Competitive
Sensitivity	20 ng/ml
Range	25.6 ng/ml - 3200 ng/ml
Assay duration	Multiple steps standard assay
Product overview	<p>A His-tag is an amino acid motif that contains at least six consecutive histidine (His) residues, often at the N- or C-terminus of a protein. More than 50% of recombinant proteins expressed by eukaryotic or prokaryotic expression systems are tagged with His-tag. Selective, sensitive and quantitative detection of protein levels and protein-protein binding partners expressed with His-tag is therefore a valuable tool in Life Science research.</p> <p>His-tag Protein ELISA Kit (ab285248, E4550) is a competitive-based ELISA that is easier, faster and more sensitive method to detect His-tag proteins expressed in both bacterial, insect and mammalian cells.</p> <p>Detection method- Absorbance (450 nm) Species reactivity- Universal</p>
Tested applications	Suitable for: Functional Studies
Platform	Microplate (12 x 8 well strips)

Properties

Storage instructionsStore at -20°C. Please refer to protocols.

Components	96 tests
10X Wash Buffer II	1 x 50ml
Antibody Diluent	1 x 7ml

Components	96 tests
His-Tag Antibody	1 x 20µl
Conjugate Buffer I	1 x 7.5ml
His-Tag Coated Plate	1 unit
Goat Anti-Rabbit HRP Conjugate I	1 x 25µl
Microplate Sealing Film	4 units
Sample Diluent IV	1 x 20ml
His-Tag Standard	2 vials
Stop Solution VIII	1 x 10ml
TMB Substrate I	1 x 10ml

Applications

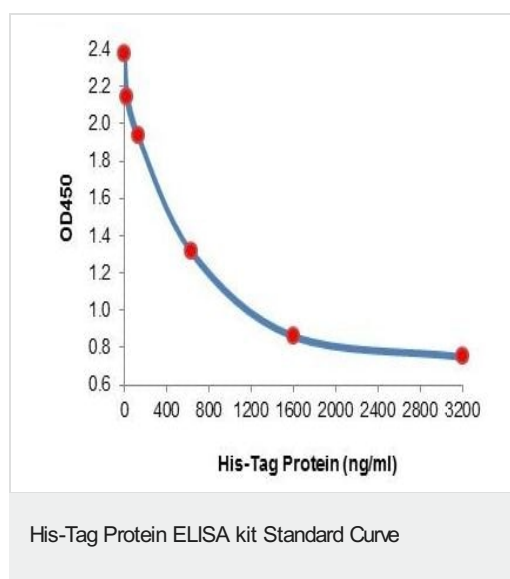
The Abpromise guarantee

Our **Abpromise guarantee** covers the use of ab285248 in the following tested applications.

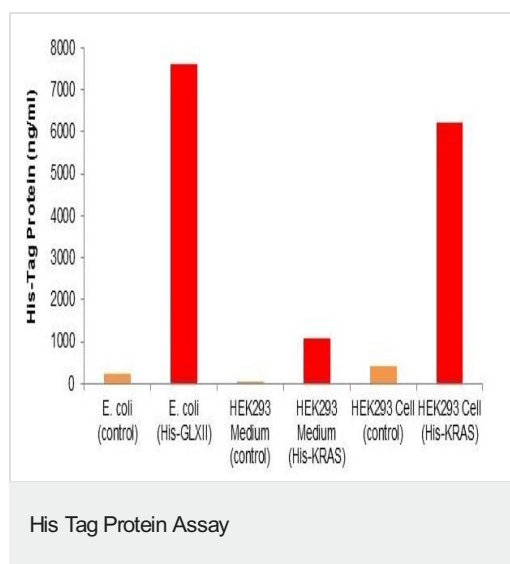
The application notes include recommended starting dilutions; optimal dilutions/concentrations should be determined by the end user.

Application	Abreviews	Notes
Functional Studies		Use at an assay dependent concentration.

Images



His-tag protein standard curve (This standard curve is for demonstration only. A standard curve must be run with each assay).



Detection of expressed His-tag protein (GLXII or KRAS) in E. coli, HEK293 medium and cells

Please note: All products are "FOR RESEARCH USE ONLY. NOT FOR USE IN DIAGNOSTIC PROCEDURES"

Our Abpromise to you: Quality guaranteed and expert technical support

- Replacement or refund for products not performing as stated on the datasheet
- Valid for 12 months from date of delivery
- Response to your inquiry within 24 hours
- We provide support in Chinese, English, French, German, Japanese and Spanish
- Extensive multi-media technical resources to help you
- We investigate all quality concerns to ensure our products perform to the highest standards

If the product does not perform as described on this datasheet, we will offer a refund or replacement. For full details of the Abpromise, please visit <https://www.abcam.com/abpromise> or contact our technical team.

Terms and conditions

- Guarantee only valid for products bought direct from Abcam or one of our authorized distributors